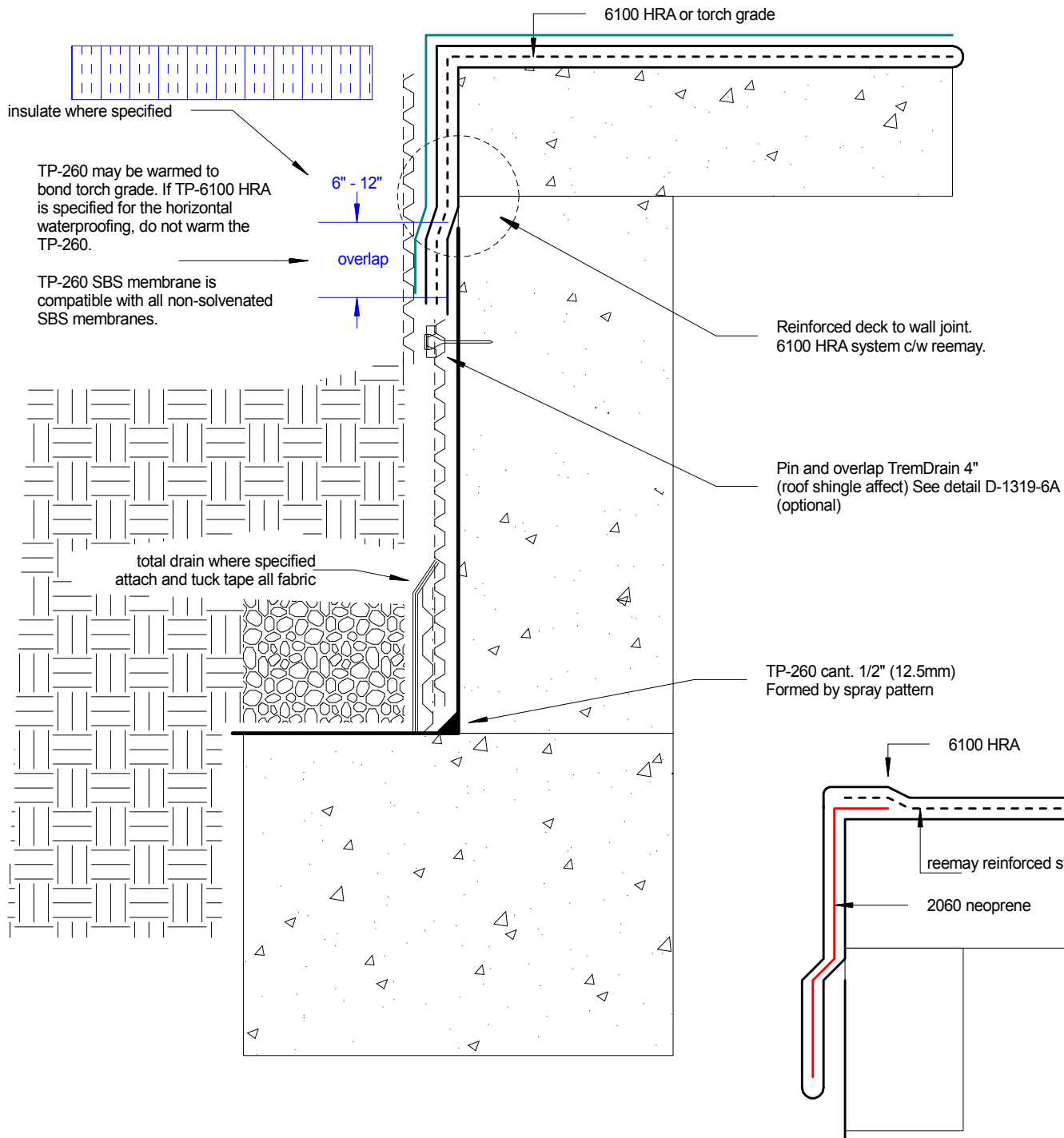




TP-260 foundation wall system

Shown: Tie-in horizontal torch grade or 6100 to vertical transition. Wall to Footing transition.



Tremco Canada
6178 Netherhart Rd.
Mississauga, On.
L5T 1B7
Ph: 905-564-6100
Fax: 905-564-6110

Tremco Inc.
www.tremcosealants.com

Tremco Inc.
3735 Green Rd,
Beachwood, OH. USA
44122
Ph: 216-292-5000
Fax: 216-292-5036

Date: Jun-18-2011

Drawing No. D-1312-7B

Drawn by: G.M. Approved: <>

Scale:

Project: typical