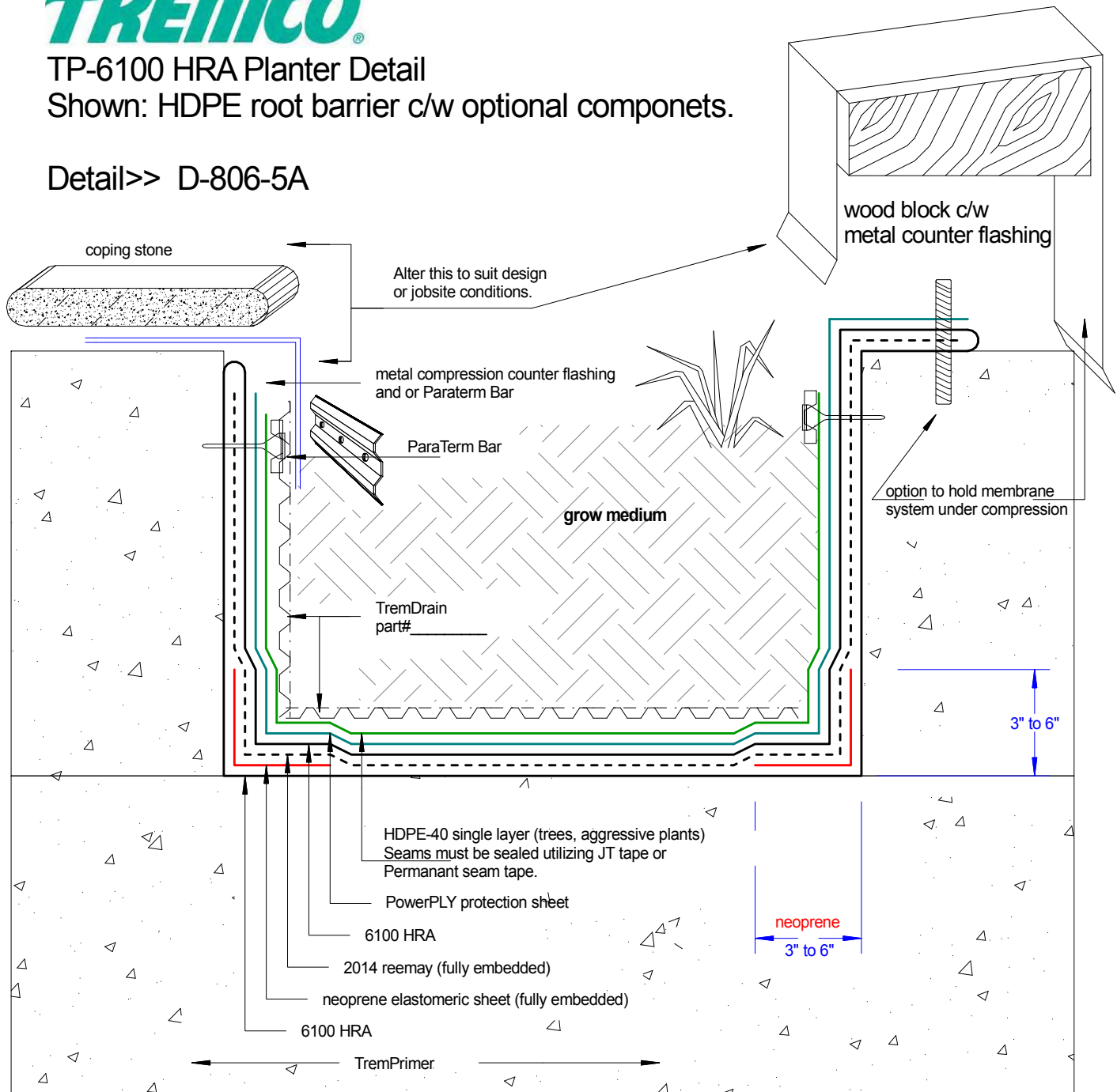




TP-6100 HRA Planter Detail

Shown: HDPE root barrier c/w optional componets.

Detail>> D-806-5A



Tremco Canada
6178 Netherhart Rd.
Mississauga, On.
L5T 1B7
Ph: 905-564-6100
Fax: 905-564-6110

Tremco Inc.
www.tremcosealants.com

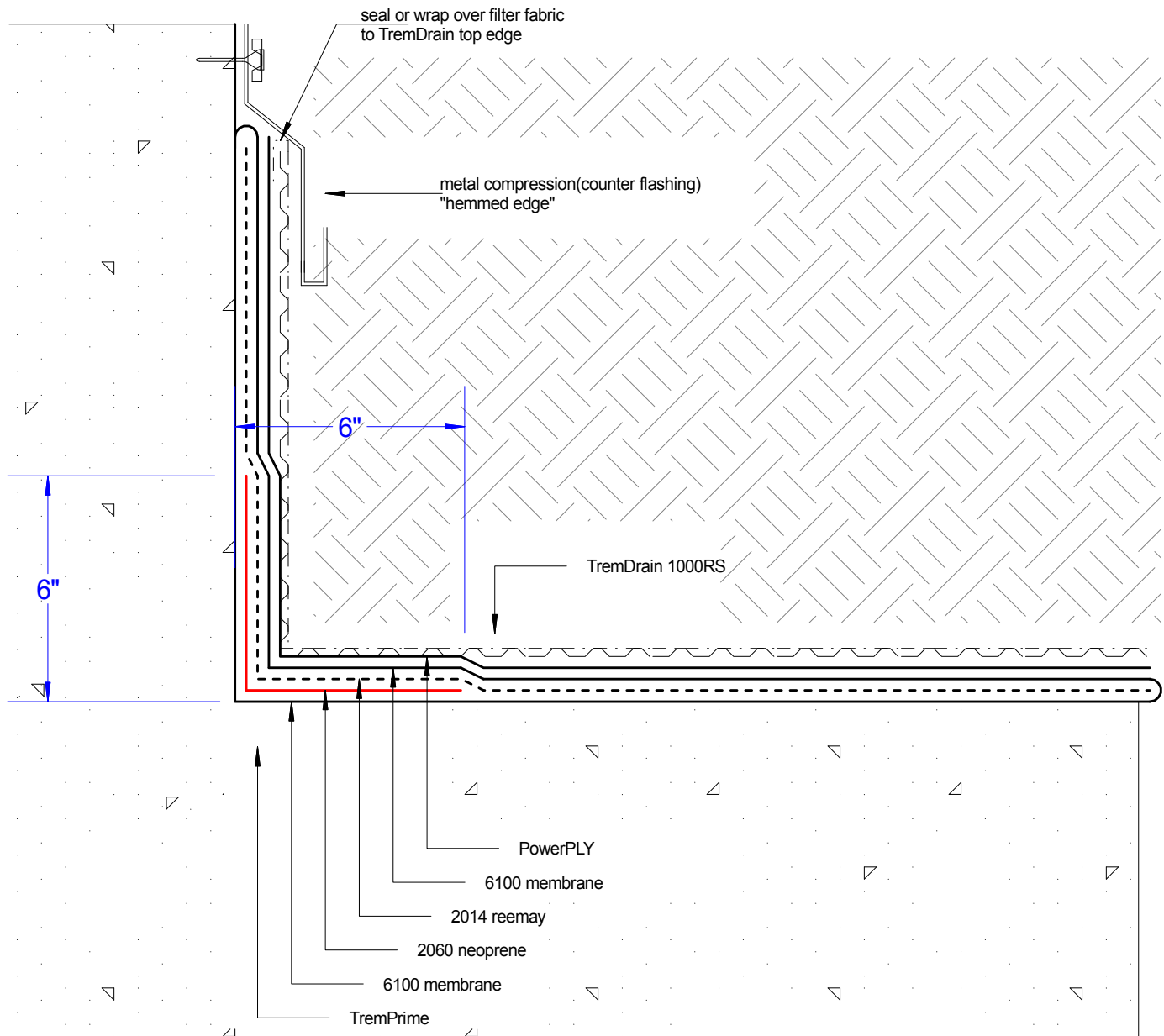
Tremco Inc.
3735 Green Rd,
Cleveland, OH. USA
44122
Ph: 216-292-5000
Fax: 216-292-5036

Date: Mar-9-2009		Drawing No. D-806-5A
Drawn by: G.M.	Approved: <>	Scale:
Project:		typical



PLANTER WATERPROOFING DETAIL 6100 HRA reinforced upturn

detail D-1288-5A



Tremco Canada
6178 Netherhart Rd.
Mississauga, On.
L5T 1B7
Ph: 905-564-6100
Fax: 905-564-6110

Tremco Inc.
www.tremcosealants.com

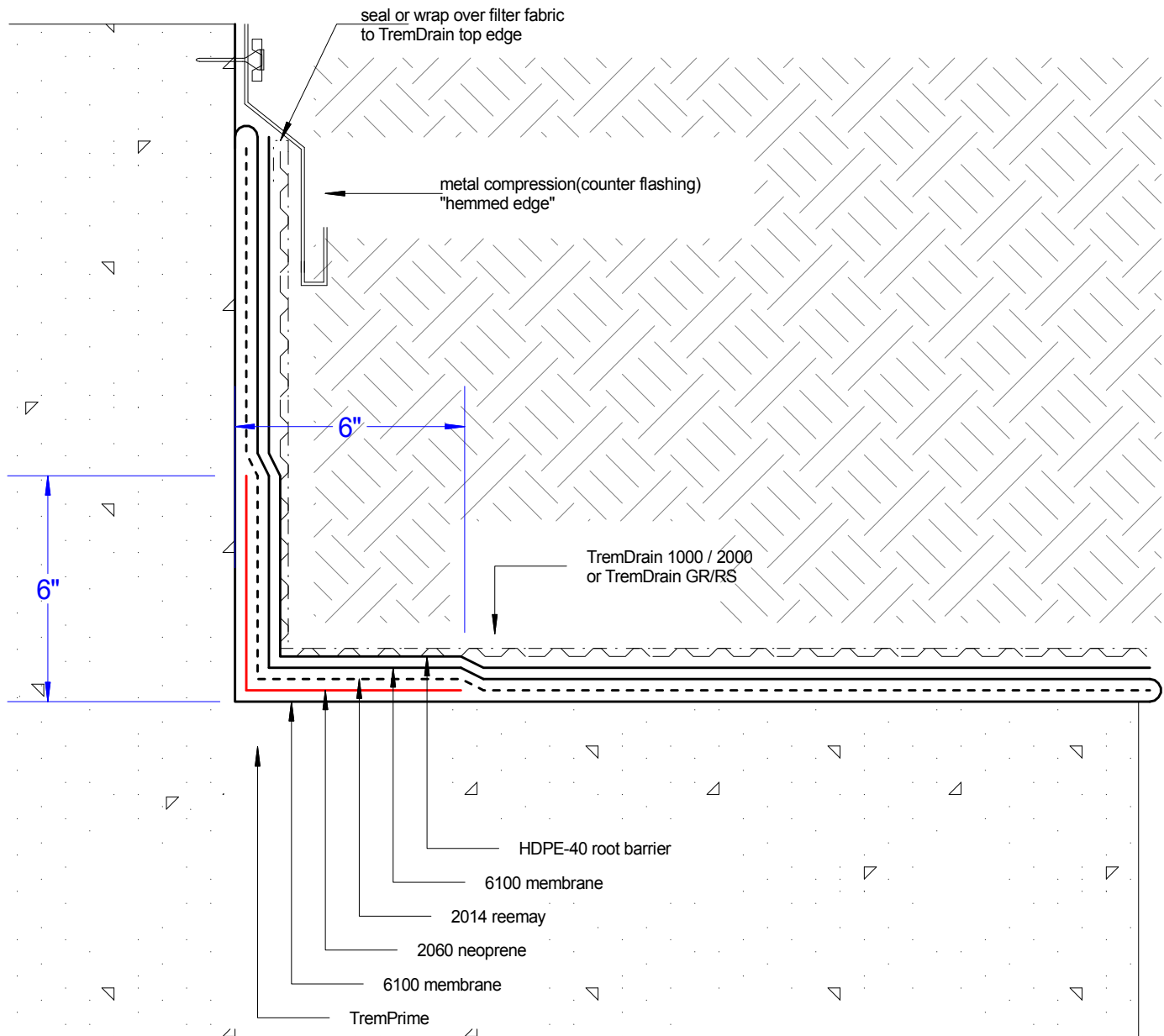
Tremco Inc.
3735 Green Rd,
Cleveland, OH. USA
44122
Ph: 216-292-5000
Fax: 216-292-5036

<u>Date:</u> Feb-17-2009		<u>Drawing No.</u> D-1288-5A
<u>Drawn by:</u> G.M.	<u>Approved:</u> <>	<u>Scale:</u>
<u>Project:</u> Typical		



PLANTER WATERPROOFING DETAIL 6100 HRA reinforced upturn

detail D-506-3B-R2 (rev: Jan-12-2009)



Tremco Canada
6178 Netherhart Rd.
Mississauga, On.
L5T 1B7
Ph: 905-564-6100
Fax: 905-564-6110

Tremco Inc.
www.tremcosealants.com

Tremco Inc.
3735 Green Rd,
Cleveland, OH. USA
44122
Ph: 216-292-5000
Fax: 216-292-5036

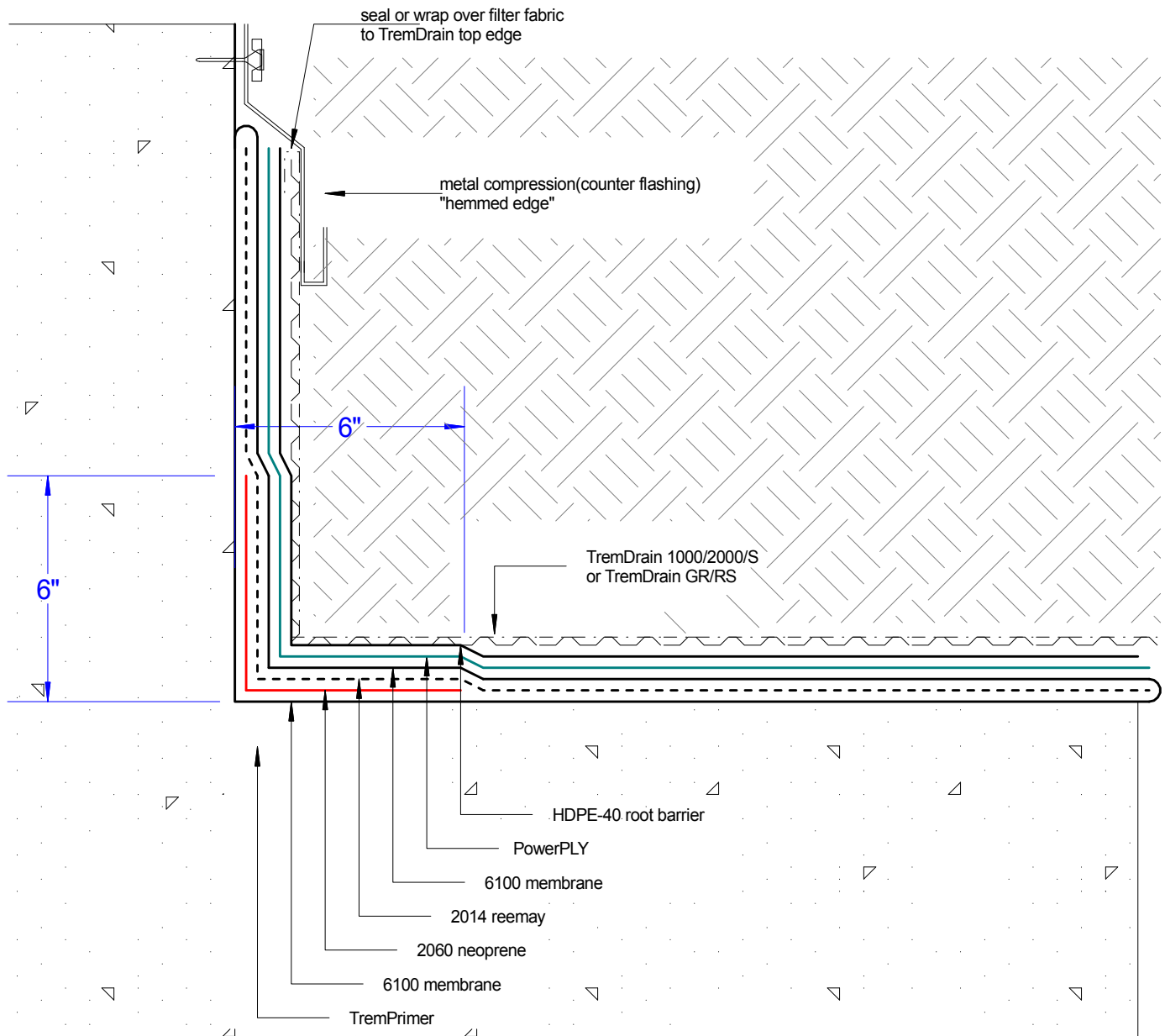
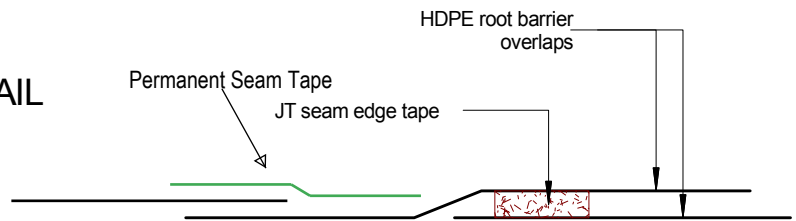
<u>Date:</u> Jan-12-2009		<u>Drawing No.</u> D-506-3B-R2
<u>Drawn by:</u> G.M.	<u>Approved:</u> <>	<u>Scale:</u>
<u>Project:</u> Typical		



PLANTER WATERPROOFING DETAIL 6100 HRA reinforced upturn

detail D-506-3B-R3 (rev: Apr-9-2009)

Options to seal HDPE overlaps



Tremco Canada
6178 Netherhart Rd.
Mississauga, On.
L5T 1B7
Ph: 905-564-6100
Fax: 905-564-6110

Tremco Inc.
www.tremcosealants.com

Tremco Inc.
3735 Green Rd,
Cleveland, OH. USA
44122
Ph: 216-292-5000
Fax: 216-292-5036

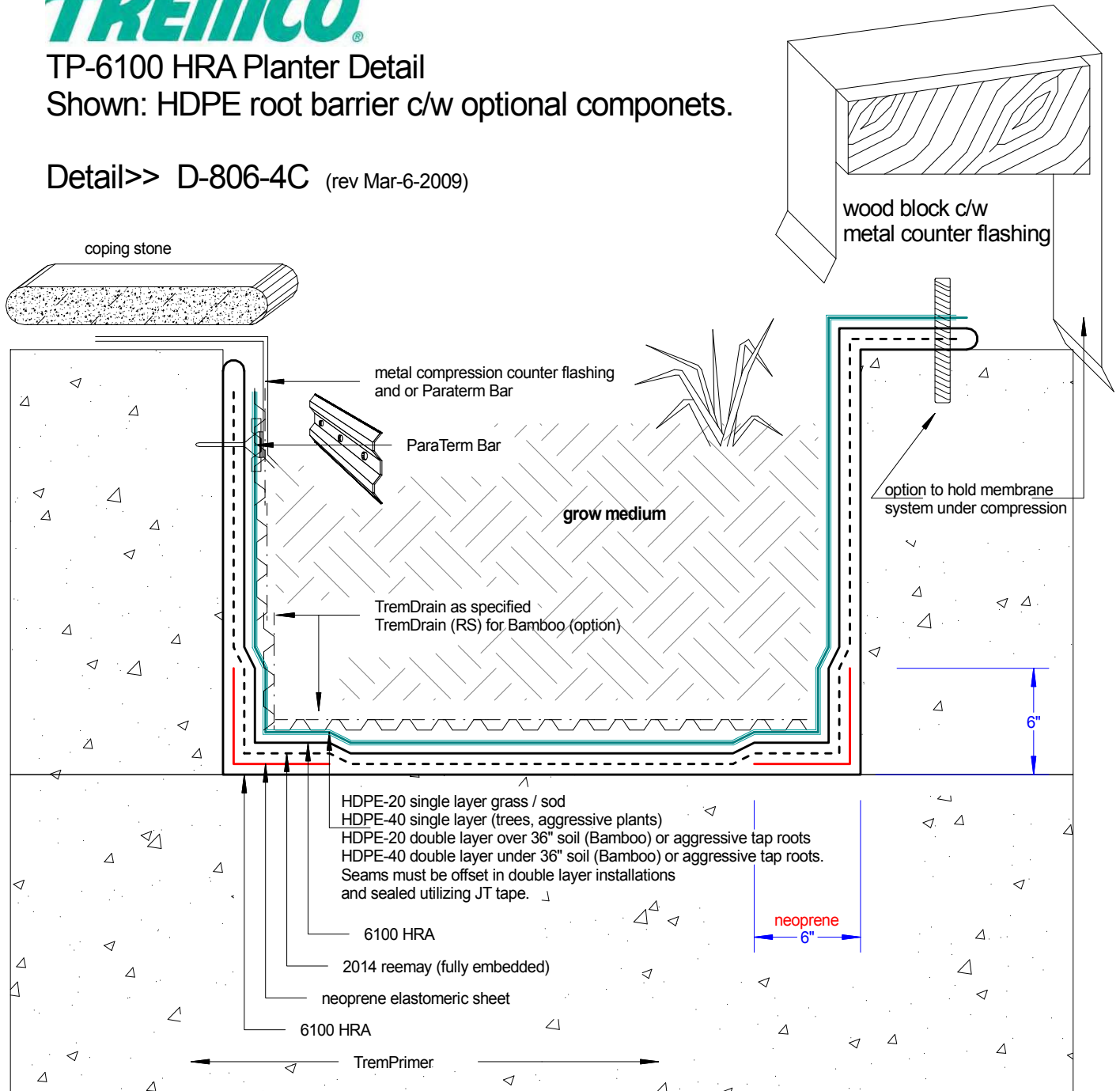
<u>Date:</u> Apr-9-2009		<u>Drawing No.</u> D-506-3B-R3
<u>Drawn by:</u> G.M.	<u>Approved:</u> <>	<u>Scale:</u>
<u>Project:</u> Typical		



TP-6100 HRA Planter Detail

Shown: HDPE root barrier c/w optional componets.

Detail>> D-806-4C (rev Mar-6-2009)



Tremco Canada
6178 Netherhart Rd.
Mississauga, On.
L5T 1B7
Ph: 905-564-6100
Fax: 905-564-6110

Tremco Inc.
www.tremcosealants.com

Tremco Inc.
3735 Green Rd,
Cleveland, OH. USA
44122
Ph: 216-292-5000
Fax: 216-292-5036

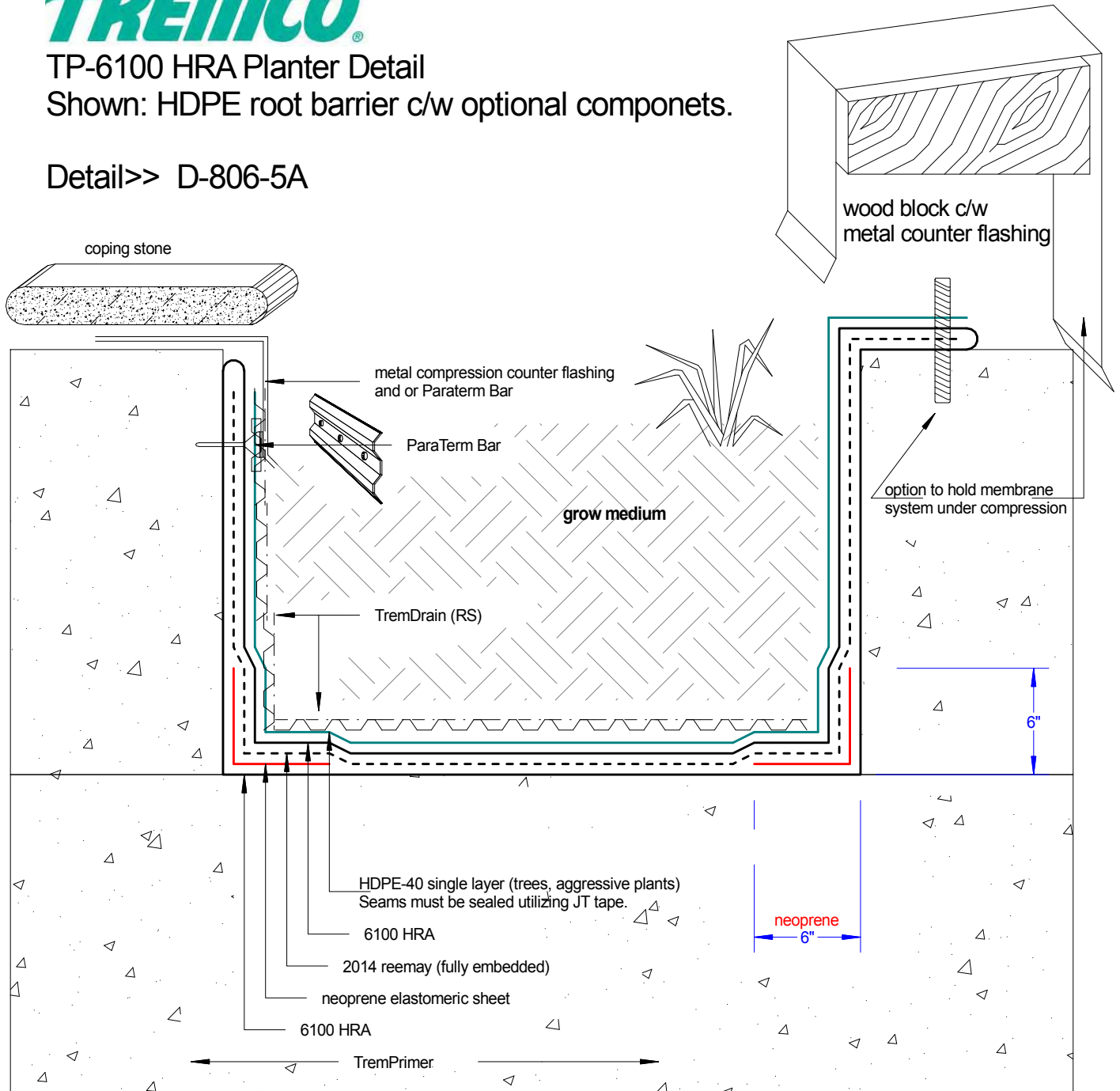
Date: Mar-6-2009		Drawing No. D-806-4C
Drawn by: G.M.	Approved: <>	Scale:
Project:		typical



TP-6100 HRA Planter Detail

Shown: HDPE root barrier c/w optional componets.

Detail>> D-806-5A



Tremco Canada
6178 Netherhart Rd.
Mississauga, On.
L5T 1B7
Ph: 905-564-6100
Fax: 905-564-6110

Tremco Inc.
www.tremcosealants.com

Tremco Inc.
3735 Green Rd,
Cleveland, OH. USA
44122
Ph: 216-292-5000
Fax: 216-292-5036

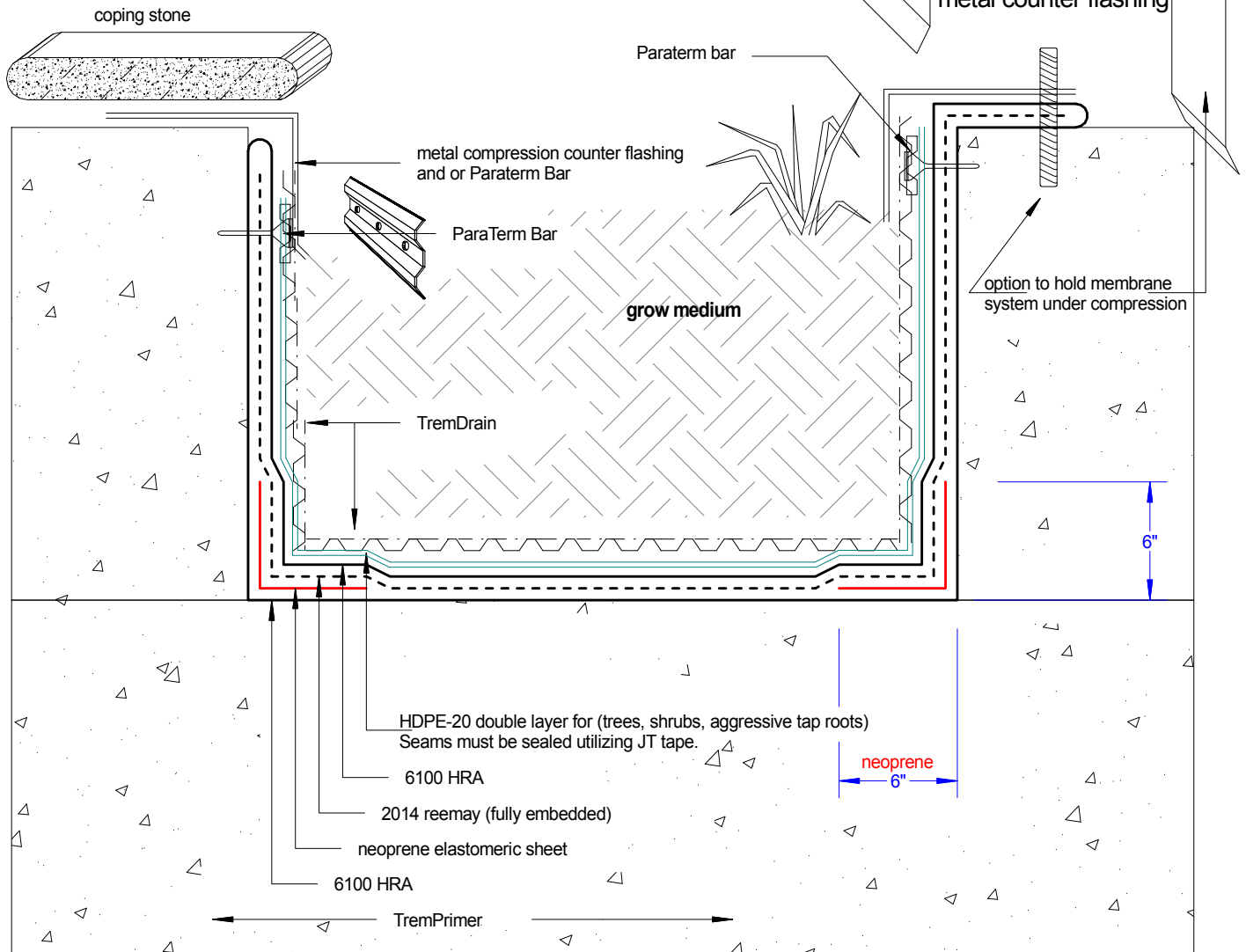
<u>Date:</u> Mar-9-2009		<u>Drawing No.</u> D-806-5A
<u>Drawn by:</u> G.M.	<u>Approved:</u> <>	<u>Scale:</u>
<u>Project:</u> typical		



TP-6100 HRA Planter Detail

Shown: HDPE-20 Double layered root barrier
c/w optional components.

Detail>> D-806-5B



Tremco Canada
6178 Netherhart Rd.
Mississauga, On.
L5T 1B7
Ph: 905-564-6100
Fax: 905-564-6110

Tremco Inc.
www.tremcosealants.com

Tremco Inc.
3735 Green Rd,
Cleveland, OH. USA
44122
Ph: 216-292-5000
Fax: 216-292-5036

Date: Mar-10-2009		Drawing No. D-806-5B
Drawn by: G.M.	Approved: <>	Scale:
Project:		typical