

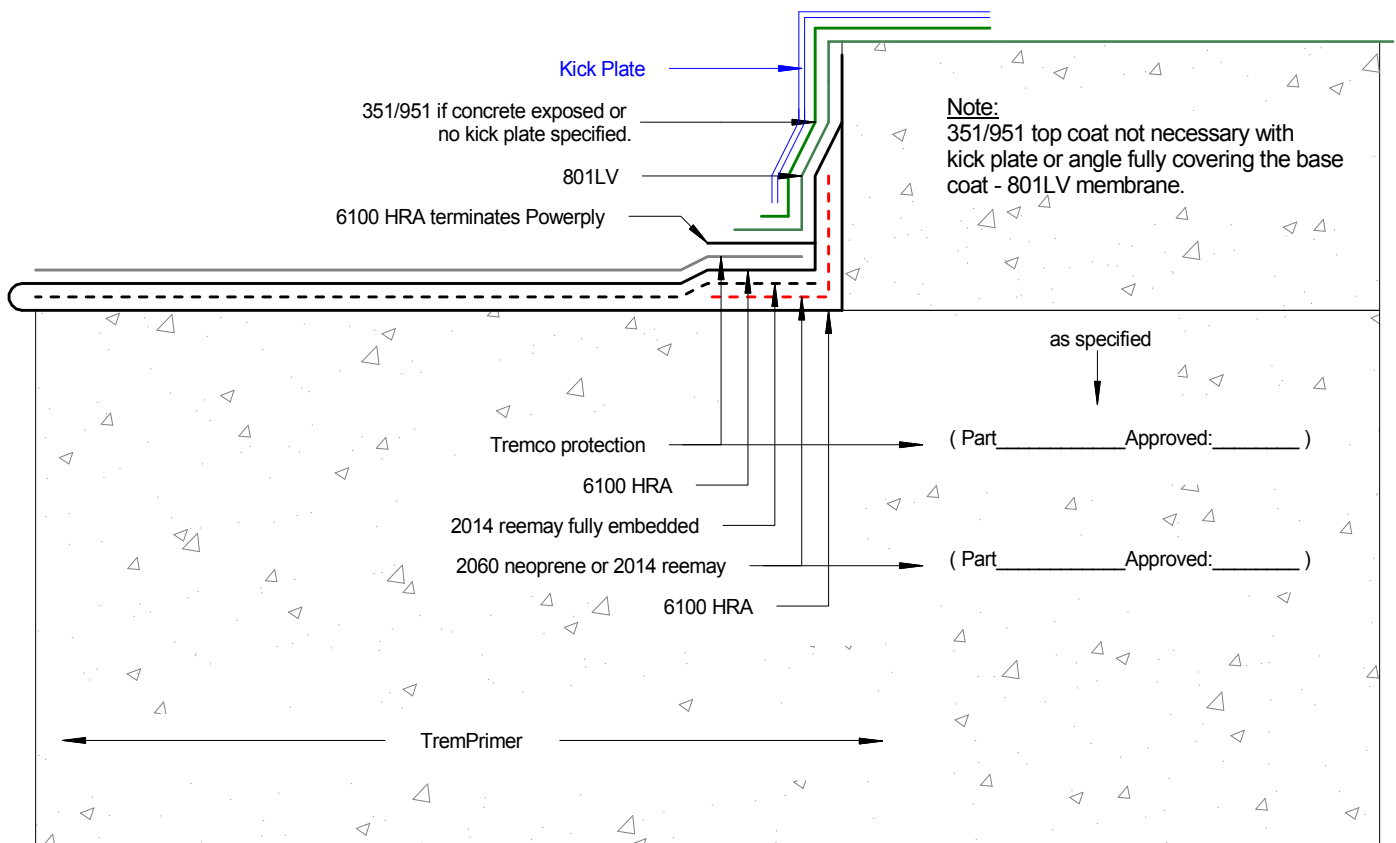
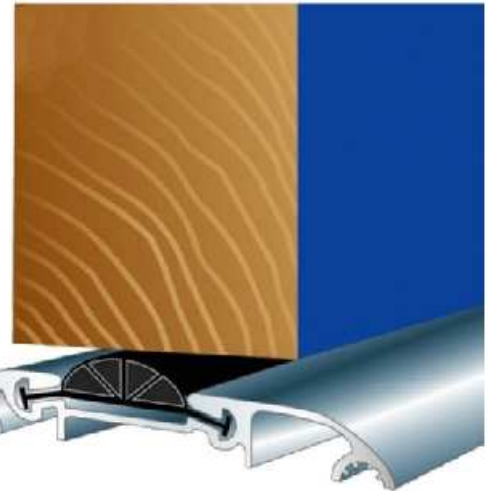


Entry Door Sill Plate Waterproof Termination

Shown: 801/351/951 over 6100 HRA

D-1322-9A

sealant always used
under sil.



Tremco Canada
6178 Netherhart Rd.
Mississauga, On.
L5T 1B7
Ph: 905-564-6100
Fax: 905-564-6110

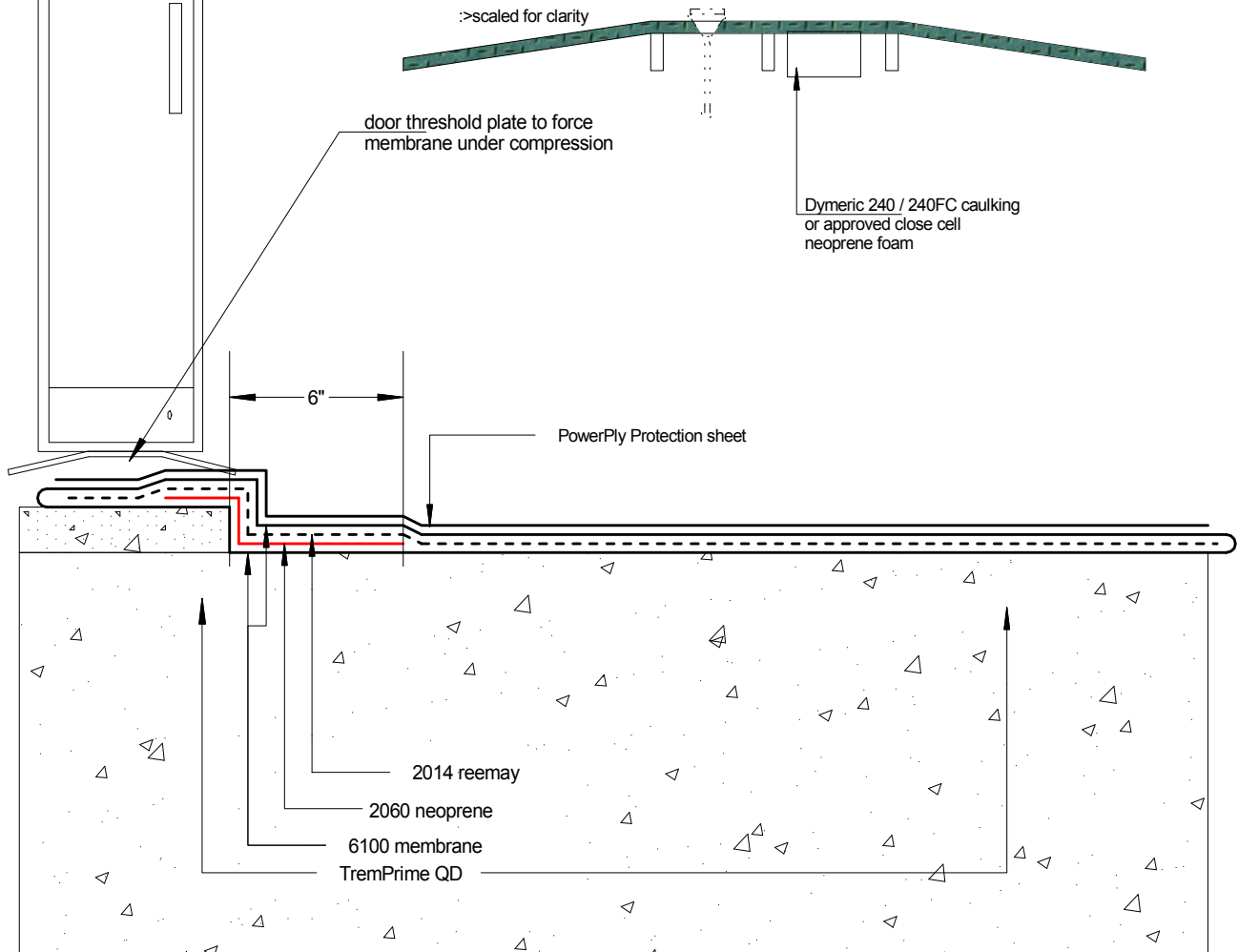
Tremco Inc.
www.tremcosealants.com

Tremco Inc.
3735 Green Rd,
Beachwood, OH. USA
44122
Ph: 216-292-5000
Fax: 216-292-5036

Date: May-12-2009		Drawing No. D-1322-9A
Drawn by: G.M.	Approved: <>	Scale:
Project:		



Door threshold membrane termination 6100 HRA shown



Tremco Canada
6178 Netherhart Rd.
Mississauga, On.
L5T 1B7
Ph: 905-564-6100
Fax: 905-564-6110

Tremco Inc.
www.tremcosealants.com

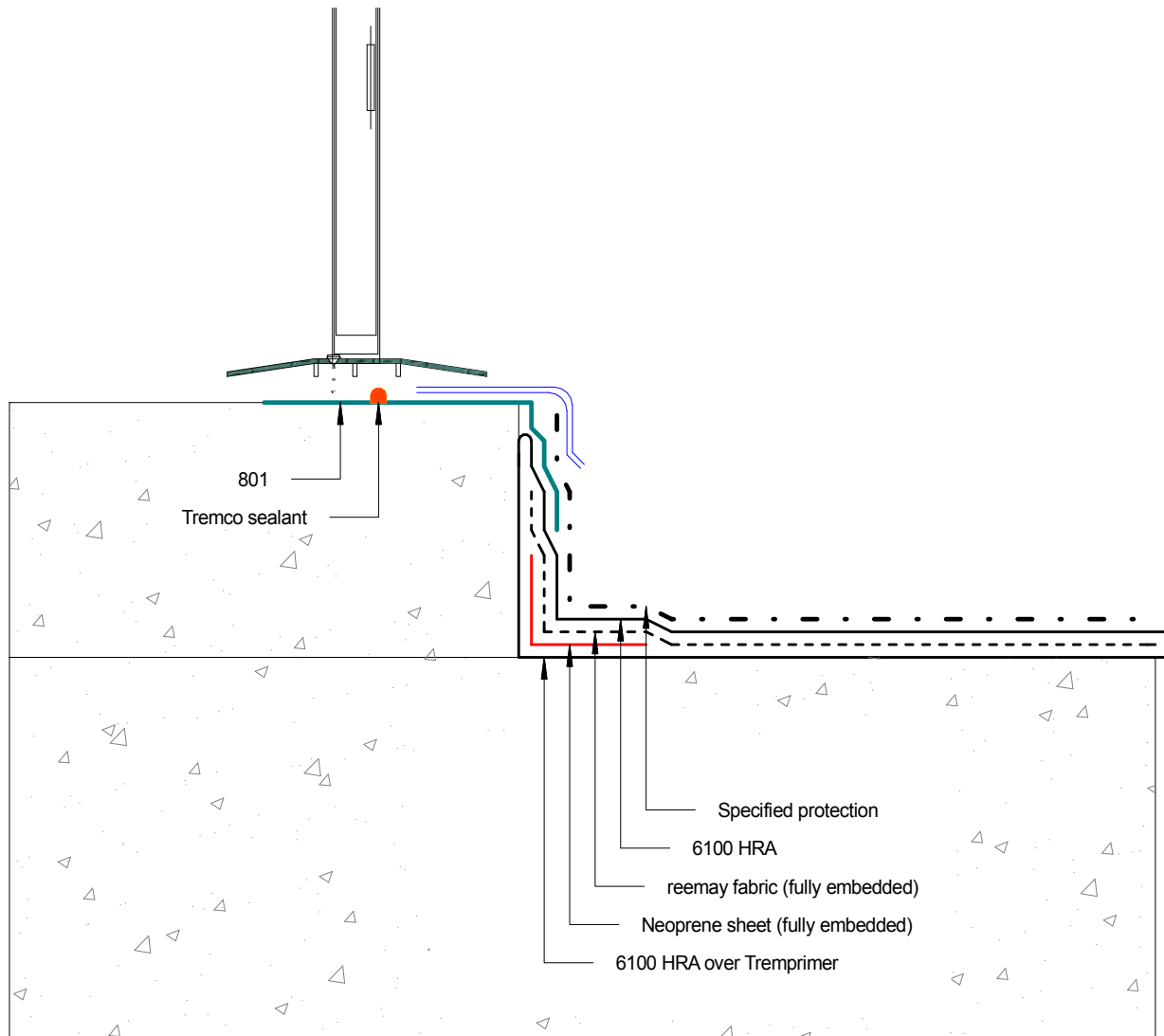
Tremco Inc.
3735 Green Rd,
Cleveland, OH. USA
44122
Ph: 216-292-5000
Fax: 216-292-5036

Date: Jan-2-2008		Drawing No. D-144-1B
Drawn by: G.M.	Approved: <>	Scale:
Project:		



6100 tie-in to 801 under door sill

detail>> D-1456-484A



Tremco Canada
6178 Netherhart Rd.
Mississauga, On.
L5T 1B7
Ph: 905-564-6100
Fax: 905-564-6110

Tremco Inc.
www.tremcosealants.com

Tremco Inc.
3735 Green Rd,
Beachwood, OH. USA
44122
Ph: 216-292-5000
Fax: 216-292-5036

Date: Jul-12-2012		Drawing No. D-1456-484A
Drawn by: G.M.	Approved: <>	Scale:
Project:		