



TurningPoint Cloud + NXT Training Manual for AFJROTC

Updated October 2016

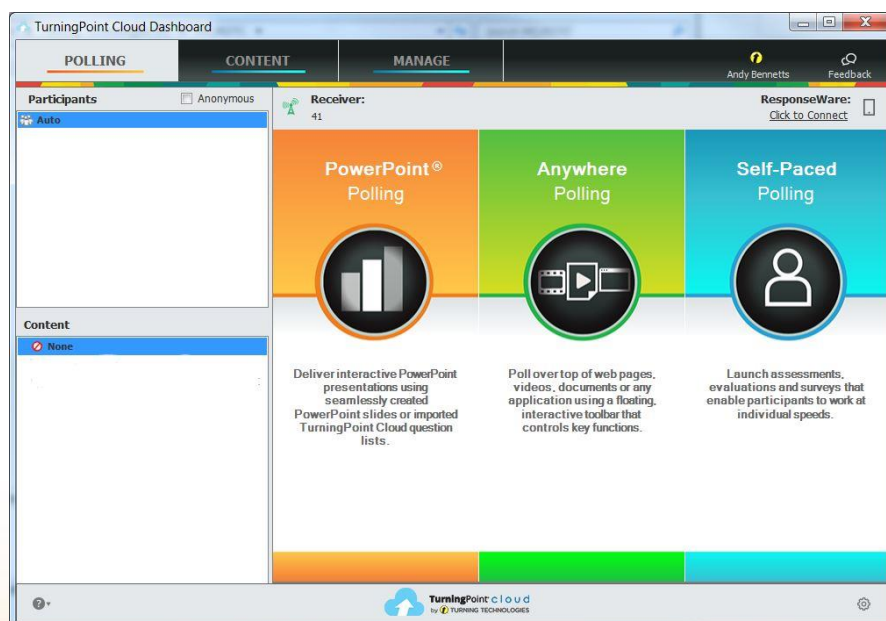




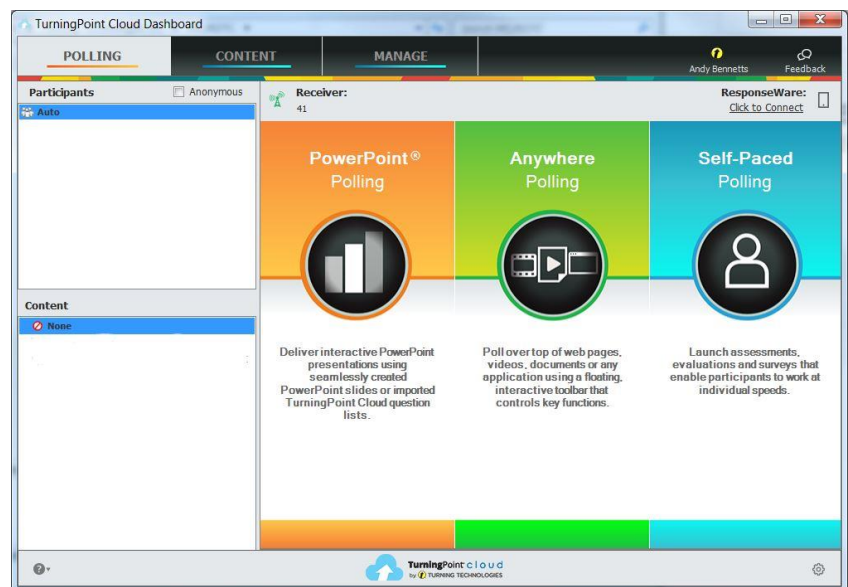
TABLE OF CONTENTS

TurningPoint Cloud Job Aids	3-5
10 Steps to Running PowerPoint Polling	3
10 Steps to Running Anywhere Polling	4
10 Steps to Running Self-Paced Testing	5
Training and Support Resources	6
Preface	7
Chapter 1: TurningPoint Basics	8-14
Task 1: Locate and Open the AFJROTC Curriculum	9-11
Task 2: Launch and Log into TPC	11
Task 3: Understand the Organization of the AFJROTC Curriculum	11-13
Task 4: Hardware Setup	13-14
Chapter 2: Participant Lists	15-20
Task 1: Create Participant Lists	15
Task 2: Modify Participant Lists	16
Task 3: Demographics	16-17
Task 4: Manage Participant Lists/Change Device ID.....	17-18
Task 5: Real-Time Registration	18-19
Chapter 3: Engage Lessons	20-37
Task 1: Engage PPT Polling	20-27
Task 2: Engage Anywhere Polling	28-32
Task 3: Engage Self-Paced Polling	33-36
Chapter 4: Reports	37-40
Task 1: Generate Reports	37
Task 2: Export Reports	37-38
Task 3: Save & Print PDF Reports	38
Task 4: Common Report Descriptions	38-40
Chapter 5: Competitions	41-44
Task 1: Participant Leaderboard	41
Task 2: Team Assignment	42
Task 3: Team Leaderboard	43
Task 4: Team MVP	43
Appendix 1: PresenterCard	44-45
Appendix 2: Content Creation & Additional Resources	46



TURNINGPOINT: STEPS TO SUCCESSFULLY RUN POWERPOINT® POLLING FOR PC

- 1 Plug in Receiver. 
- 2 Open and Log into TurningPoint Cloud. 
- 3 Verify Connection (Receiver and/or ResponseWare).
- 4 Select Participant List (optional).
- 5 Click PowerPoint® Polling.
- 6 Open Presentation.
- 7 Reset Session.
- 8 Run Presentation.
- 9 Save Session (optional).
- 10 Generate Reports (optional).





TURNINGPOINT: STEPS TO SUCCESSFULLY RUN ANYWHERE POLLING WITH A QUESTION LIST

1 Plug in Receiver. 

2 Open and Log into TurningPoint Cloud. 

3 Verify Connection (Receiver and/or ResponseWare).

4 Select Participant List (optional).

5 Select Content (optional).

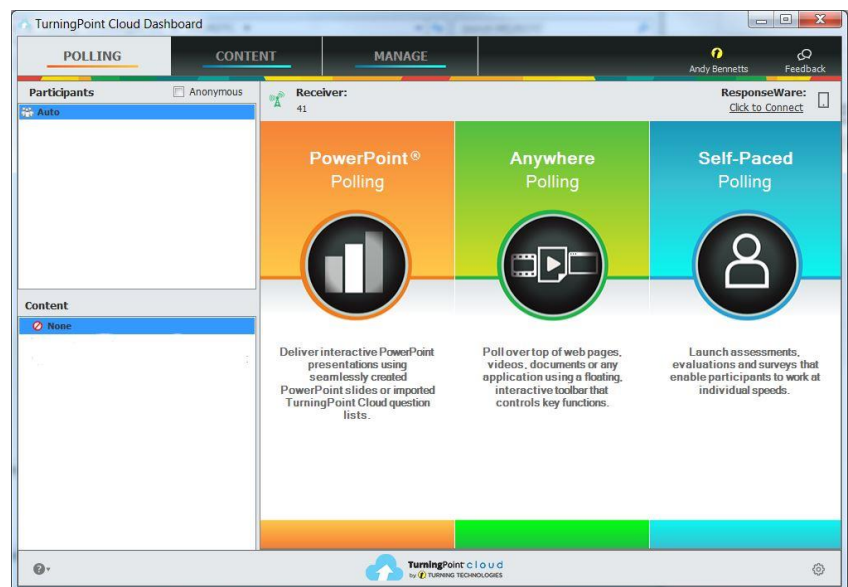
6 Click Anywhere Polling.

7 Click Start to open polling.

8 Click Stop to close polling.

9 Save Session (optional).

10 Generate Reports (optional).





TURNINGPOINT: STEPS TO SUCCESSFULLY SELF-PACED POLLING

1 Plug in Receiver. 

2 Open and Log into TurningPoint Cloud. 

3 Select Participant List (optional).

4 Select Content.

5 Click Self-Paced Polling

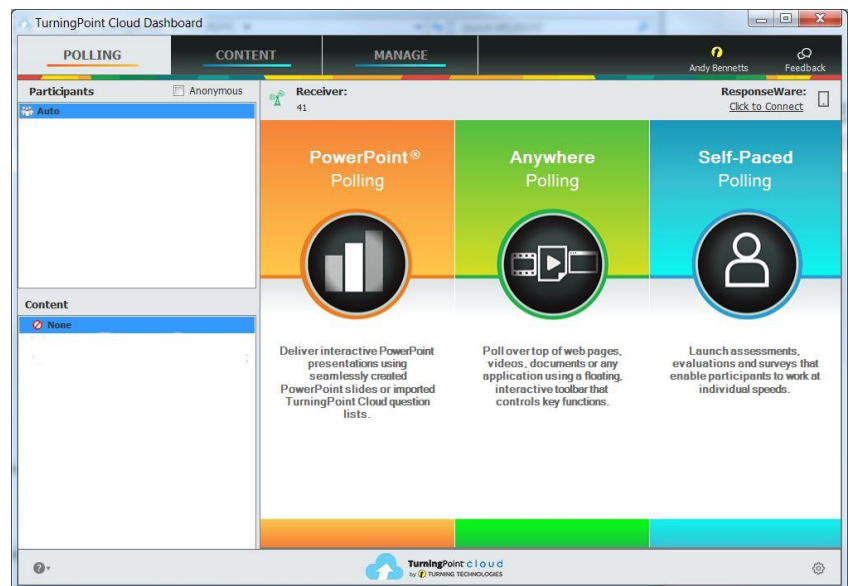
6 Click Accept Logins.

7 Click Start Polling.

8 Click Stop Polling.

9 Save Session (optional).

10 Generate Reports (optional).



Training and Support Resources

Resources and Contacts:

In addition to this Training Document (which can be found digitally at: <http://tinyurl.com/AFJROTC-TPC-Manual> and the TPC Help Menu (which is embedded in the software), the following resources are available to support AFJROTC instructors in their use of TurningPoint Cloud & NXT.

1. Turning Technologies Technical Support: 866-746-3015 (M-F; 8am-9pm EST)

Technical support is available via phone, online chat or email. All can be accessed from this link: <http://www.turningtechnologies.com/technical-support>. On this page you will also see a tab for **Solutions and Resources** where you can access a comprehensive knowledge base for both TurningPoint and MOBI. In addition, you may email Technical Support at support@turningtechnologies.com.

2. Air Force JROTC Support Team

In addition to Turning Technologies' technical support team, you also have a dedicated **Air Force JROTC Support Team** available to assist you. Contact information is listed below. Email is often a convenient way to make first contact, but feel free to call us directly if you need support immediately.

<p>Andy Bennetts Interactive Learning AFJROTC Project Manager (for content and technical questions that tech support cannot answer) 970-564-3284 andy@INTLRN.com</p>	<p>Tamara Williams Interactive Learning VP of Sales (for sales and replacement questions) 303.988.2577 tamara@INTLRN.com</p>	<p>Steve Huff Interactive Learning President (for any other questions regarding sales, support or service) 720-261-2597 steve@INTLRN.com</p>
--	---	---

3. Training Resources

• Air Force JROTC Specific Training Resources

- This training manual, designed specifically for AFJROTC Instructors, is the best place to start!
- **AFJROTC Training Library** – www.tinyurl.com/AFJROTC-Training
 - Direct Link: <http://www.screencast.com/t/Hv6ffVZOrv>

• “Generic” TurningPoint Cloud Training Resources

a. Software & User Documentation Downloads

- A copy of the TurningPoint Cloud software is on your RF receiver.
- If, for some reason, you need to download TPC, click or type the link below:
 - <https://account.turningtechnologies.com/account/>
 - Log into your Turning Account.
 - Click on Downloads and download the TPC software.

b. TPC Training Resources: <http://www.turningtechnologies.com/support/turningpoint-cloud>

Preface

In June of 2015, the HQ of AFJROTC decided to transition from a CPS/Pulse platform to a TurningPoint Cloud/NXT platform as their primary deployment of response technology in the classroom. The decision rested on the following elements:

1. CPS (Classroom Performance System), while having performed well for the last eight years (2006-2014), does not include the capabilities needed to take AFJROTC forward in K-12 education technology. These fundamental elements include:
 - A. Web connections for download/upload content and data functions
 - B. App-based integration for 1:1 environments (Responseware)
 - C. Allowing for open-ended and constructed response questions that are digitally captured
 - D. A platform that allows for future development to integrate new requirements

The TurningPoint Cloud software with NXT hardware positions AFJROTC to implement the requirements for the future that are outlined above. The following document explains how instructors can teach the AFJROTC Curriculum, now embedded with TurningPoint Cloud presentations and question lists.

We understand that there will be a learning curve to absorb a new software. However, we are confident that TurningPoint Cloud's ease-of-use, feature set, and future capabilities will make your time worthwhile.

Chapter 1: TurningPoint Cloud Basics

TPC Benefit #1: One of the key advantages of TPC (TurningPoint Cloud) is that the receiver doubles as a storage device. The RF receiver sent with your equipment was specially made for AFJROTC to store all four years of content, making it incredibly simple to transport your lessons and tests anywhere you go.



Figure 1: TPC RF Receiver

TPC Benefit #2: Another useful feature is that with the No-Install Version of the TPC software included on the receiver, you can launch TPC from any computer with no need to install software!

TurningPoint Cloud Dashboard

The screenshot shows the TurningPoint Cloud Dashboard interface. The top navigation bar includes tabs for POLLING, CONTENT, and MANAGE. The left sidebar contains a 'Participants' section with 'Auto' and 'Roster Template' options, and a 'Content' section with a tree view of folders like 'Aerospace Science' and 'Leadership Education'. The main area features three large colored buttons: 'PowerPoint® Polling' (orange), 'Anywhere Polling' (green), and 'Self-Paced Polling' (blue). The bottom of the dashboard has a footer with 'TurningPoint cloud by TURNING TECHNOLOGIES' and a settings icon. Green arrows point to various elements: 'Launch Polling' points to the POLLING tab; 'Create Content' points to the CONTENT tab; 'Manage Participant Lists and Polling Data' points to the MANAGE tab; 'Turning Account Username' points to the user name 'Andy Bennetts'; 'Provide Feedback' points to the 'Feedback' link; 'Select Participant List' points to the 'Auto' option; 'Select Content' points to the 'Content' tree; 'Choose Polling Environment' points to the three main buttons; 'Help & Tutorials' points to the question mark icon; 'Version & Update' points to the cloud icon; and 'Preferences' points to the gear icon.

Welcome to TPC (TurningPoint Cloud)!

TurningPoint Cloud combines seamless polling with PowerPoint® (PowerPoint Polling), over top of any application (Anywhere Polling), and self-paced tests, evaluations and surveys (Self-Paced Polling). Conduct real-time assessments to track progress and instantly view results and collect valuable data all from one easy-to-use application.

Objectives – Tasks

- ❖ Task #1: Locate and Open the AFJROTC Curriculum
- ❖ Task #2: Launch and Log into TPC
- ❖ Task #3: Understand the Organization of the AFJROTC Curriculum
- ❖ Task #4: Launch and Log into TurningPoint Cloud
- ❖ Task #5: Hardware Setup

Task #1: Locate and Open the AFJROTC Curriculum

Over the last eight years (2008-2016), AFJROTC CPS Databases have been updated several times. With the release of each new textbook, new CPS question banks were created and others became obsolete. This has led to many challenges in terms of how to best integrate each new deck of CPS questions into one, centralized database.

With the transition to TPC in 2016-17, all content from the AFJROTC CPS Database 1 Mar 2015 (Figure 2a) has been converted into TPC format and stored on your RF receiver. (Figure 2b)

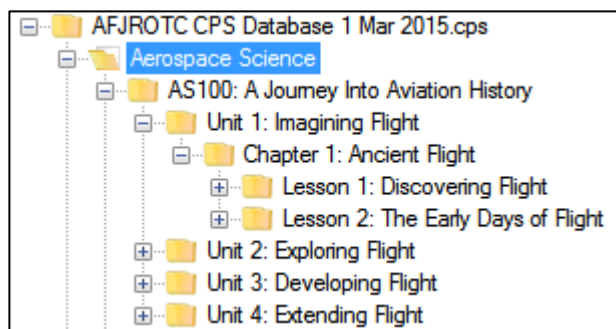


Figure 2a: AFJROTC Content in CPS Database

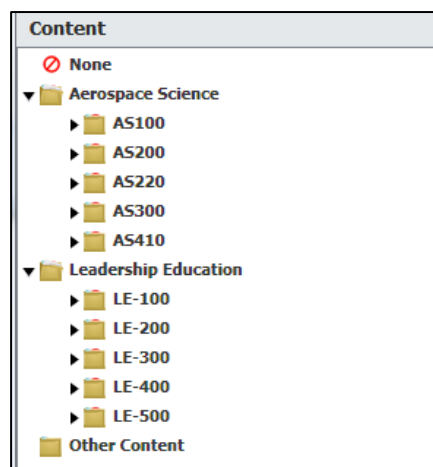


Figure 2b: AFJROTC Content in TPC

Locate and Open the AFJROTC Curriculum

1. Plug your TPC RF Receiver (Figure 1) into an available USB port in your computer.
2. Double-click on "Computer" from your Desktop.
3. Locate and double-click the "TURNINGTECH" receiver/thumb drive.
4. Open the "Content" folder.

Note: Instructors can continue to use the portable hard drives issued in 2010 as a backup for curriculum content (e.g., PPTs, question lists, tests, etc.). However, it is **strongly recommended** that you teach from the content located on the RF receiver since it is set up to launch lessons directly from TPC.

TPC Benefit #3: In the future, updates to content will be pushed via a web-connection through your Turning Account directly to your RF receiver!

The “Content” folder on your TPC RF Receiver is set up in a folder structure taken from the books of the AFJROTC Curriculum, making lessons easy to find. (Figure 3a & 3b)

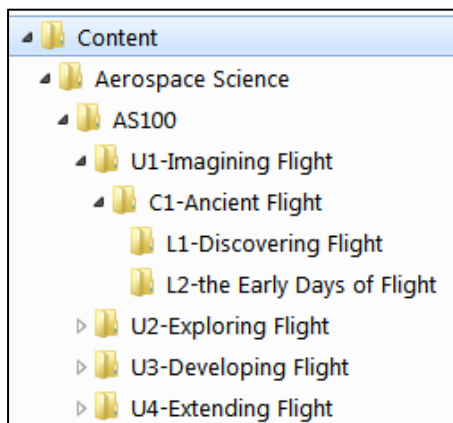


Figure 3a: Content Folder in TPC

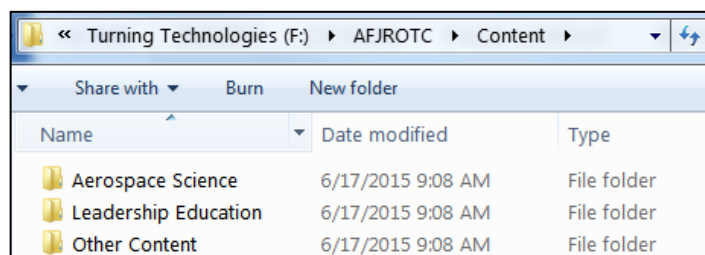


Figure 3b: Content Folder in Windows Explorer

New Term: Questions stored in CPS as **CPS Lessons** are called **Question Lists** in TPC.

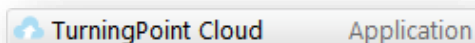
Task #2: Launch and Log into TPC

IMPORTANT: Before you begin using TPC, you must create a Turning Account. An email will be sent from Turning Technologies with instructions on how to activate your account.


If you have **NOT** received an email with directions to create a Turning account, contact AFJROTC HQ.

Once you have created and activated your Turning Account, follow these steps to log into TPC:

1. Launch TPC from the Turning Technologies receiver.



2. Enter the email and password you used to setup your Turning Account. (Figure 4)
3. The TPC Dashboard will open.

IMPORTANT: Once logged in, click  (lower-right corner of Dashboard) to set an Offline Password.

Offline Password: Set Password

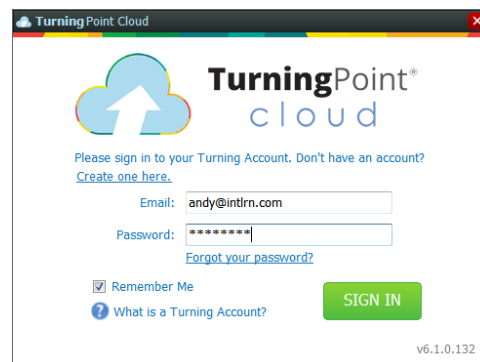


Figure 4: TPC Login Screen

Question Codes: Each question includes a unique code that identifies the Unit, Chapter, and Lesson to which that question belongs (for example, U1C2L1:LQ1 reads “Unit One, Chapter Two, Lesson One, and Lesson Question 1”). Some chapters and lessons are tagged with slightly different codes depending on how the textbook is organized. Test questions have been tagged as “MQ” and “SQ”.

Questions for each lesson can be seen in the Content tab by drilling down to the lesson level (through the Unit, Chapter, and Lesson) and highlighting the desired Question List. You do this by clicking the black triangle to the left of each level. Once you dig down to the lesson level, the PowerPoints and Question Lists in that lesson will appear in the Lesson folder.

Every Lesson Question section includes from 6 to 10 questions according to a specific format known as the F.I.T. Model. The following shows an outline of how the questions are sequenced for a lesson containing 10 questions:

- Two “Warm-up/Opening” Questions
 - Question 1: **Self-assessment** (readiness to learn, topic interest, background knowledge, or confidence in ability)
 - Question 2: **Focusing question** (a question on basic knowledge)
- Two “Learning Check #1” Questions (3 & 4; **Reinforcement questions**)
- Two “Learning Check #2” Questions (5 & 6; **Reinforcement questions**)
- Two “Learning Check #3” Questions (7 & 8; **Reinforcement questions**)
- Two “Review” Questions (9 & 10)
 - Question 9: **Short answer or Application** (typically open-ended question coming from the “Checkpoints” section of the text book)
 - Question 10: **Transfer of Learning question** - to get the student thinking beyond the learning experience or to reflect on the learning experience.

TPC Benefit #5: Vocabulary Questions are now embedded directly into your PowerPoint lessons. By using the **Vocabulary Question Slide Index** (Figure 5), you can choose the vocabulary questions you want to deliver to your cadets.

Vocabulary Questions are taken directly from the student workbooks. Each “question stem” is a definition, and the choices are various word choices. The vocabulary questions can be used either before instruction to establish a foundational understanding of the terms, during instruction as a supplement to the lesson questions, or after as a review or game.

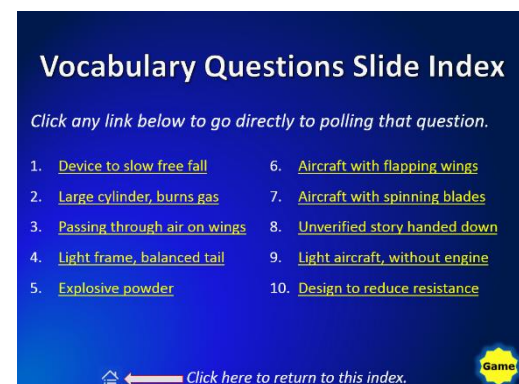


Figure 5: Vocabulary Question Slide Index

Test Questions: Many units have test questions included within TPC. These are the same questions that are included in the textbook.

It is recommended that you do NOT edit or reorganize questions in lessons or tests, but rather engage them in a Polling Environment during your classroom instruction as they are listed.


If you would like to create your own lessons and TPC questions, we suggest you CREATE a new lesson to hold these questions. Instructions for that will be discussed later in this training manual.

Task #4: Hardware Setup

By default the receiver and ResponseCards are set to Channel 41. **If you are the only TurningPoint Cloud user within a 200ft radius on Channel 41, simply plug in the receiver and begin polling.**

If another user is on Channel 41, you must use a different channel to avoid interference. **NXT Devices must be set to the same channel as the receiver.** Changing the channel allows multiple receivers to accept different sets of responses when in close proximity of one another.

Changing the Receiver Channel

1. Plug in the **receiver** .
2. Open TurningPoint Cloud and sign in to your Turning Account.
3. Select the channel number below **Receiver**. (Figure 6)

IMPORTANT: If you do not see a number under **Receiver**, exit out of eInstruction/Turning Technologies' Device Manager (right-click, Select Exit) or ensure that the "Scan for ResponseCard Devices" box is unchecked in the Preferences.

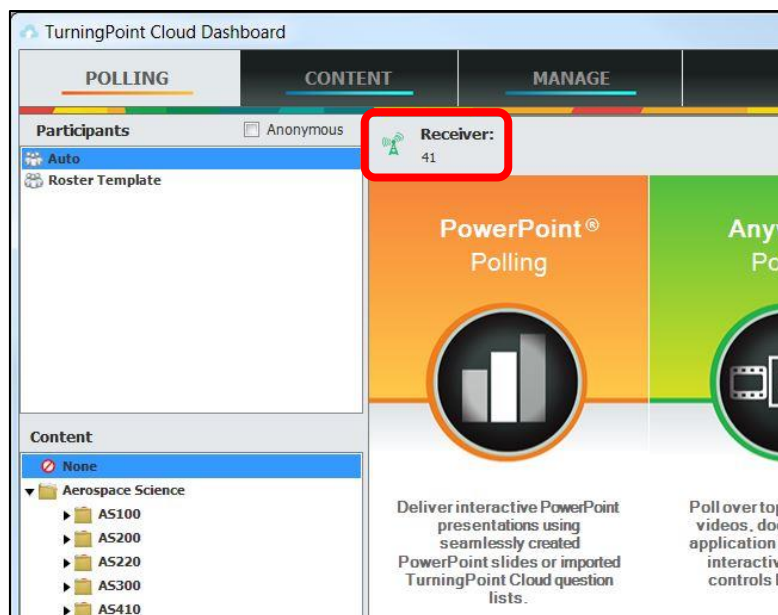


Figure 6: Receiver Channel

4. Select a new channel (1 - 74 for NXT) from the *Receiver* drop-down menu. (Figure 7)

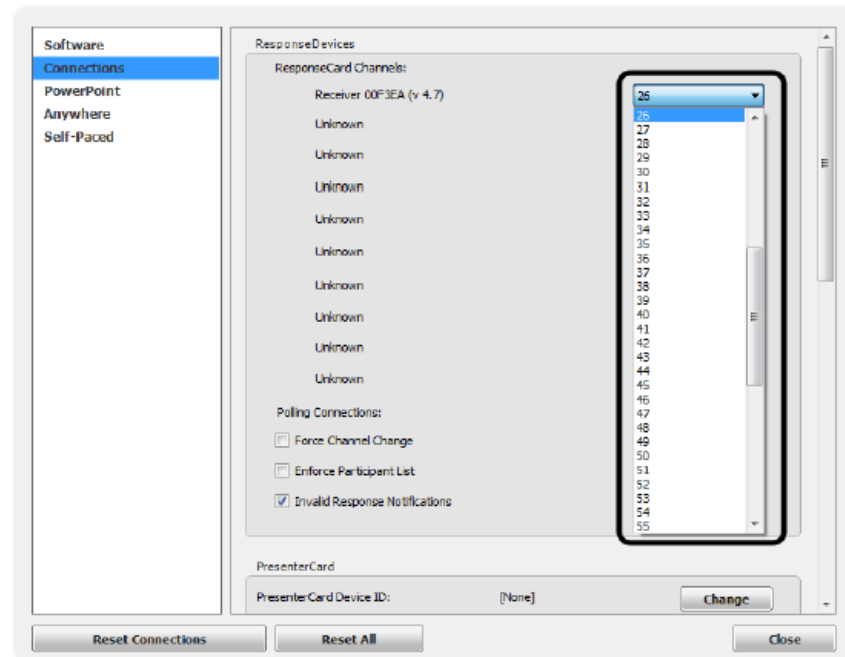
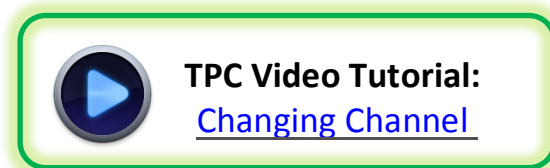


Figure 7: ResponseCard Channel Menu

5. Click **Close**.

Changing the Channel on NXT Card

1. Press the **Channel** button.
2. Enter the **two-digit** channel number.
3. Press the softkey below **OK**.



Locking/Unlocking the NXT Card

By default, your NXT Card is sent “unlocked” meaning you or your cadets can change the channel, message, and change settings. To restrict this access, you can simply “Lock” the card down.

1. Press the **Channel** button once. (1)
2. Press the **ABC** button two times. (4)
3. Press the **Channel** button once. (1)
 - An “unlocked” card will have a Wrench in the lower right corner of the LCD.
 - A “locked” card will have no icon in the lower right corner of the LCD.

Chapter 2: Participant Lists

New Term: Class Rosters stored in CPS are called **Participant Lists** in TPC.

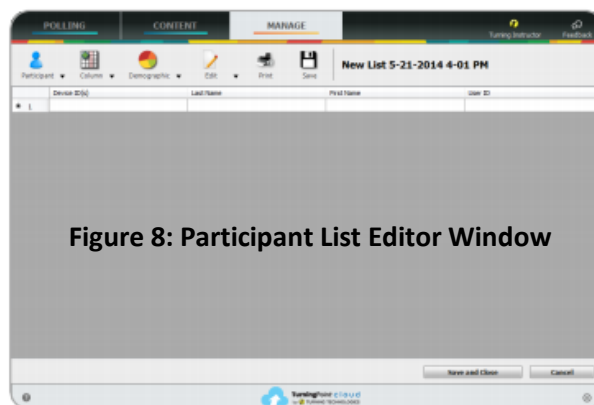
A participant list is a list of participant names, User IDs, Device IDs and other custom categories. The use of a participant list allows for detailed reporting on each participant from a session. In TurningPoint Cloud, participant lists can be created from scratch or imported from either the Turning Account Registration website or an LMS.

Objectives – Tasks

- ❖ Task #1: Create Participant Lists
- ❖ Task #2: Modify Participant Lists
- ❖ Task #3: Demographics
- ❖ Task #4: Manage Participant Lists
- ❖ Task #5: Real-Time Registration

Task #1: Create Participant Lists

1. Select the **Manage tab**.
2. Click the **Participant List** drop-down menu and select **New**.
 - The Create Participant List window opens.
3. Name the participant list, select the **Create Manually** radio button and click **Create List**.
 - The Participant List Editor is displayed. (Figure 8)
4. Select a cell and enter the participant information relevant to that particular category.
 - For example, enter the participant's last name under the Last Name column.
 - **TIP:** If there is a CSV or TXT file that already contains the participant information, copy and paste the information into the Participant List Editor.
 - It is also possible to copy and paste text from an Excel file directly into the Participant List Editor.
5. Press **Enter** on the keyboard to add another participant.
6. When finished, click **Save** and **Close** to save the participant list.



TPC Video Tutorial:
[Building Participant List](#)

Task #2: Modify Participant Lists

After a participant list has been created, changes may be made to suit your specific needs.

Editing Participant List Information

1. Select the **Manage** tab.
2. Select a participant list and click **Edit Participants**.



- The Participant List Editor is displayed. (Figure 9)

	Device ID	Last Name	First Name
1	1	Smith	John
2	2	Jones	John Paul
3	3	Decatur	Stephen
4	4	Barry	John
5	5	Dewey	George

Figure 9: Participant List Editor

3. Select a cell and edit the participant information.
4. To add a participant, click the **Participant** icon and select **Add**.
5. To remove a participant, select the participant, click the **Participant** icon and select **Remove**.
6. To add a column, click the **Column** icon and select **Add**.
7. Select a header type.
 - **Custom**- Enter a name for the column header in the box provided and click OK.
8. To remove or edit a column, select a cell within the column, click the **Column** icon and select **Remove** or **Edit**.
9. To use the find or replace feature, click **Edit** and select **Find**.
10. Click **Save** and **Close** to save the changes and return to the Participant List Overview screen.

Task #3: Demographics

After a participant list has been created, changes may be made to suit your specific needs.

Participant list demographics allow a user to assign participants to teams or other demographics. This information can be used to display demographic results during a presentation or in the Results by Demographic report. The demographics will apply to all sessions associated with the participant list.

Adding Demographics to a Participant List

1. Select the **Manage** tab.
2. Select a participant list and click **Edit Participants**.
 - The **Participant List Editor** is displayed. (Figure 9)

3. Click the **Demographic** icon and select **Add**.
4. Enter the **Demographic Grouping** name. (Figure 10)
 - The demographic grouping name allows for organization of demographic information.
5. Enter text for individual demographic **Group Options**. (Example: Gender, Ethnicity, etc.)
6. Click **Add**.
7. Repeat steps 5 - 6 until all group options have been added.
 - **TIP:** Set up different groups for different types of demographics in order to apply multiple demographic filters in the demographic report.
8. Optionally, check **Use for Competitions** if the demographic will be used for team leader boards during the presentation.
9. Click **OK**.
10. Assign a demographic for each participant from the drop-down menu in the **Demographic** column. (Figure 11)
11. Click **Save** and **Close** to save the changes and return to the Participant List Overview screen.

Figure 10: Demographic Grouping

	Device ID(s)	Gender	Last Name	First Name
▶ 1	1		Smith	John
2	2		Jones	John Paul
3	3		Decatur	Stephen
4	4		Barry	John
5	5		Dewey	George

Figure 11: Assigning Demographics

Task #4: Manage Participant Lists

Changing a Participant List Name

A participant list name may be changed at any time. Participant list names are displayed under the Polling tab so that they are easily identifiable for polling sessions.


1. Select the **Manage** tab.
2. Select a participant list and click the pencil icon  at the top left of the Participant List Overview screen.
 - The **Edit Participant List** window opens. (Figure 12)
3. Enter a name for the participant list in the box provided and click **Save**. The new participant list name is displayed in the left panel.

Figure 12: Edit Participant List Window

Duplicating a Participant List

Existing participant lists can be duplicated, allowing for quick replication of the list and data.

1. Select the **Manage** tab.
2. Select a **participant list** and click **Edit Participants**.
 - The Participant List Editor is displayed.
3. Click the **Participant icon** and select **Duplicate List**.
4. Enter a name for the duplicated list and click **OK**.
 - The new participant list is displayed in the Participant List Editor.

Printing a Participant List

1. Select the **Manage** tab.
2. Select a **participant list** and click **Edit Participants**.
 - The Participant List Editor is displayed.
3. Click the **Print** icon.
 - The Print Participant List window opens. (Figure 13)
4. Select the **fields** to be printed.
5. Select the **print orientation** from the drop-down menu.
6. Click **Print**.
 - Optionally, a print preview can be displayed by clicking **Preview**. The participant list can also be printed from the Preview window.
7. Click **Save** and **Close** to close the participant list and return to the Participant List Overview screen.

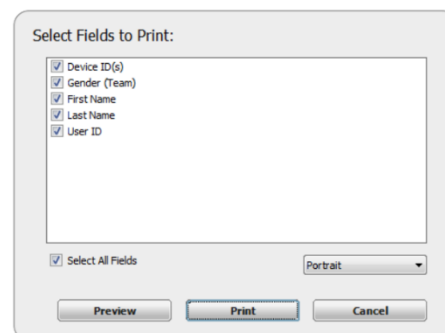


Figure 13: Print Participant List

TPC Benefit #6: You can quickly and easily Copy and Paste your roster information from an Excel or CSV file into a Participant List. No more having to re-type every cadet's name!

DEVICE ID: NXT Devices are associated by a **Device ID** equates to a “**clicker number**” on the top of the back of the individual clicker. To change this number in the clicker itself, make sure the card is unlocked (CHANNEL-ABC-ABC-CHANNEL), then press the button under the “Wrench”. Press the right or left arrow until “Device ID” shows and press “Enter”. A 6-digit number will show up and to change it press CHANNEL-CHANNEL-ABC-ENTER then put your clicker number in with leading zeroes and press “ENTER”. (i.e. Clicker number 5 would be 000005) Then press OK and lock the device again by pressing CHANNEL-ABC-ABC-CHANNEL. Tutorial: [Changing Channel or Device ID](#)

Task #5: Real-Time Registration

The Real-Time Registration Tool provides a fast and simple way to assign response devices to a participant list. Registration only takes a few moments and eliminates the need for manually entering Device IDs into the participant list. The steps below can be performed one time at the beginning of a course and then saved, making it quick and easy for students to grab their assigned clicker by looking at the large sticker number (User ID) on the back.

Prerequisites

A participant list that contains names or User IDs is required. Follow the steps below to create your own.

1. From the TPC Dashboard, click on PowerPoint Polling.
2. Click the *Participant List* drop-down menu and select a **participant list**. (Figure 17)
3. Click the **Real-Time Registration** icon on the TurningPoint Cloud ribbon.
 - The Real-Time Registration Tool opens. (Fig 18)
4. Click the **Play** button to open registration.

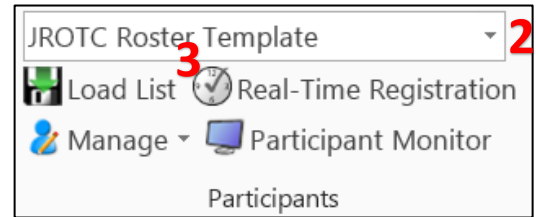


Figure 17: Participant List Menu

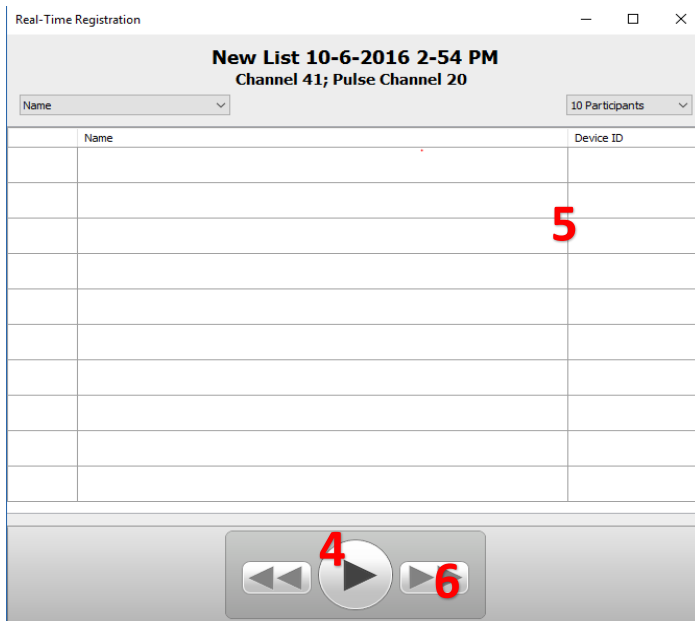


Figure 18: Real-Time Registration

5. Each participant must press a number on their response device that corresponds with the number to the left of their User ID.

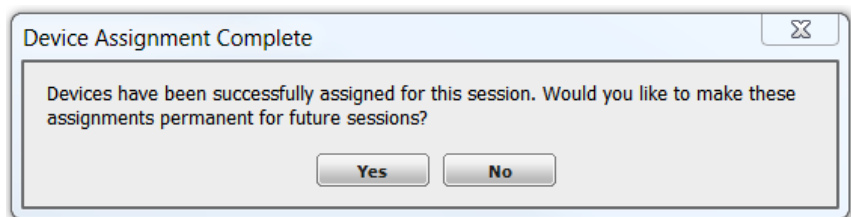
- The Device ID for the participant will appear in the Device ID column.

6. If more than 10 participants are in the participant list, click the forward or back buttons to scroll page by page to see the remaining participants.

7. Click the **Pause** button to close registration once all of the participants have responded.

8. **Close** the Real-Time Registration Tool.

The following message appears:



To permanently save the Device IDs to the participant list, click **Yes**. Otherwise, click **No**. If you click **No**, the software will remember the Device IDs for the current session, but **NOT** for future use.

Chapter 3: Engage Lessons

TPC Benefit #7: Included in this manual (pgs. 3-5) are one-page job aids for each of the polling environments; **PowerPoint**, **Anywhere**, and **Self-Paced**. We feel these documents will be a great reminder for you to have out and visible next to your computers. Follow the prescribed 10-Steps to ensure your polling goes according to plan.

Objectives – Tasks

- ❖ Task #1: Engage PPT Polling
- ❖ Task #2: Engage Anywhere Polling
- ❖ Task #3: Engage Self-Paced Polling

The intent of this chapter is to familiarize you with how to engage lessons **already created** for you within the AFJROTC Curriculum. We will utilize the steps from the 10-Step documents, located on pgs. 3-5, to explain **in detail** how to engage each of the polling environments with your pre-made content.


Task #1: Engage PPT Polling (10 Steps – Detail)

1 Plug in Receiver 



TPC Video Tutorial:
[NXT in PPT Polling](#)

REMINDER: All of your content, as well as the TPC software, lives on the Turning receiver, so you will need to have it plugged in at all times.

2 Open and Log into TurningPoint Cloud 

- Refer to Chapter 1- Task 2: **Launch and Log into TurningPoint Cloud** on pg. 9 for instructions on how to open and log into TPC.

3 Verify Connection (Receiver and/or ResponseWare).

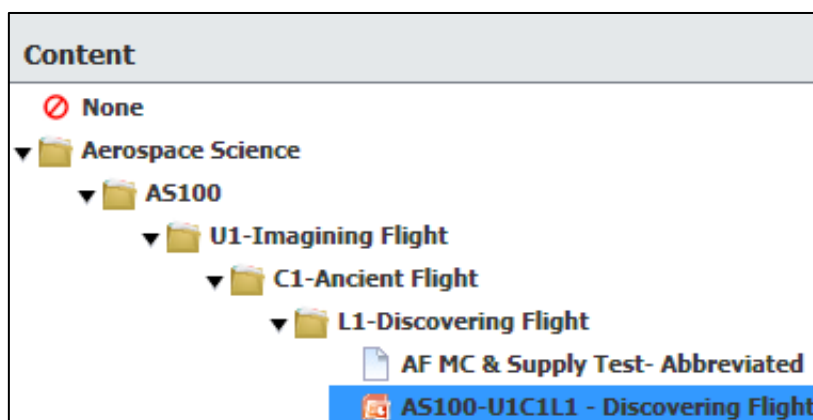
- If you have a number and a green transmitting tower next to Receiver, then your receiver is detected and ready to begin polling.
- Refer to Chapter 1- Task 4: **Hardware Setup** on pgs. 13-14 to change receiver channels.



4 Select Participant List (optional).

- TPC defaults to an **Auto** Participant List giving you the freedom to poll any/all cadets without having to create a Participant List.
- However, if you would like to track your cadet's responses, you will need to select a Participant List.
- Refer to **CH 2: Participant Lists** on pg. 15 to see how to input and assign your class roster into a Participant List.

IMPORTANT: Before clicking PowerPoint® Polling, select the lesson you want to engage from the Content window.



5 Click PowerPoint® Polling.

- TPC will launch the PPT application, now with a new TurningPoint Cloud tab (Figure 19)
- If you do not select the PPT lesson from the Content window beforehand, PPT will open to a blank presentation.
- By selecting the lesson from the content window, you can go directly to the lesson you would like to engage with PPT Polling.

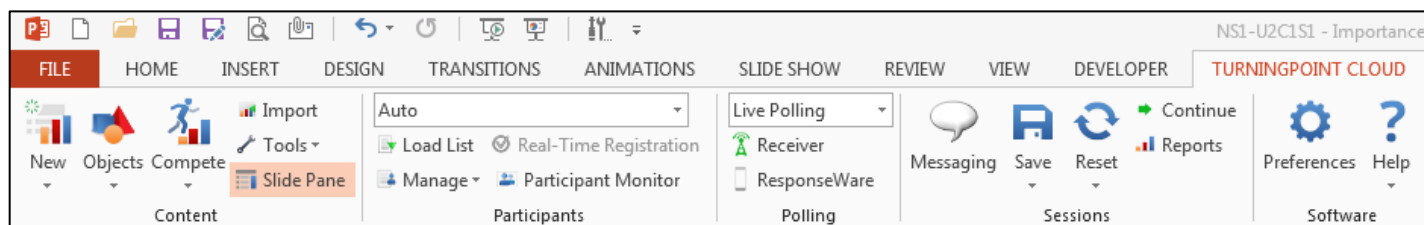



Figure 19: TPC PowerPoint Toolbar

6 Open Presentation.

- If you forget to select the PPT lesson from the **Content window**, you can always open any presentation once inside PPT.
- To open a presentation, press **Ctrl-O** or click  the in the upper left-hand corner.
- Your curriculum lessons are located on the Turning receiver inside the “**Content**” folder. (Figure 3b)
- **NOTE:** This manual focuses on the use of pre-existing content, PPT lessons, question lists, etc. Know that you can always modify or create your own interactive lessons using TPC. We will direct you to resources for Content Creation at the end of the manual.

7 Reset Session.

- The reset function in TurningPoint Cloud allows users to prepare the presentation for polling.
 - **WARNING:** Once the reset function has been performed, it cannot be undone.

Resetting a PowerPoint Polling Session or Charts

1. Click the **Reset** icon on the TurningPoint Cloud ribbon. (Figure 20)
2. Select one of the following options:



Figure 20: Reset button

- **Session-** All of the results from the session file will be reset and all of the participant data will be removed.
 - **Selected Charts (Slides)-** Selected chart(s) will be reset but the session data and participant information will NOT be removed. When the presentation is run, the previous session data will also be stored in the session file.
3. If Session was selected in the previous step, click **Save** or **Don't Save** to save the current Session Data.

New Term: **Session Data** refers to the data collected during a polling session. Unlike CPS that saves response data automatically, TPC gives you the option for each session as to whether you would like to save that session data or not. As the warning says above, you **cannot** undo a Session Reset. We will learn more about Saving Session data in Step 9.

4. Now that the session or charts have been reset, a new session can be run.

8

Run Presentation.

- Once the session has been **Reset**, you may begin your PPT presentation by going into Slideshow mode by **pressing F5** or clicking on the **Slideshow button**.



Engaging an AFJROTC PPT Lesson Embedded with TPC Slides

To familiarize you with what you will find in your new TPC-enabled PPT lessons, we will walk through a typical lesson highlighting the similarities and differences.

- Chapter Overview Slide: **UNCHANGED**
- Lesson Overview Slide: **UNCHANGED**
- Vocabulary Question Slide Index: **NEW**

New Term: The **Vocabulary Question Slide Index** refers to a new slide in most PPT decks that allows instructors to poll vocabulary questions with their cadets. To simplify the process, we placed this slide at the beginning of your lessons so you can choose which, if any, questions you would like to review with your cadets. If you want to ask key term questions, click on the corresponding link to be automatically taken to that question to poll. To return, to the Slide Index click the **Home icon**. If NOT, just click to the next slide in the presentation.

Vocabulary Questions Slide Index

Click any link below to go directly to polling that question.

- | | |
|---|---|
| 1. Device to slow free fall | 6. Aircraft with flapping wings |
| 2. Large cylinder, burns gas | 7. Aircraft with spinning blades |
| 3. Passing through air on wings | 8. Unverified story handed down |
| 4. Light frame, balanced tail | 9. Light aircraft, without engine |
| 5. Explosive powder | 10. Design to reduce resistance |



Click here to return to this index.



- Quick Write: **Modified**

New Term: The **Randomly Select Student** application replaces CPS's Random Student Picker. Click the number of the nearest class range (24, 32, 40, etc.) to receive a random number in that range.

New Process: As the instructor, you can choose whether to have your cadets respond verbally and record responses with the Mobi or with their clickers. If with clickers, selecting the **Show/Hide Response Display** button on the floating TPC showbar allows instructors to see how each cadet is responding to questions.

Quick Write

Why do you think the idea of flight is so appealing to people?

Does it appeal to you? Why?

Note to Instructors:

Click the Show/Hide Response Display Button



➤ Lesson Questions: **Modified**

All Lesson and Vocabulary questions are now embedded directly into PPT, thus removing the need for a CPS Indicator Slide.

New Method: Progress through your PPT presentation. When you reach a TPC question slide, polling will automatically open. Have cadets answer with their clickers. When all responses have been received, click once to close the polling and again to show results.

It's that simple!

How ready are you to learn today?

- A. **Not very ready**... my mind is distracted by other things.
- B. **A little slow to get going**... but starting to wake up.
- C. **Good to go**... bring on the lesson.
- D. **I am focused**, alert, energized and ready to learn!

(AS100-U1C11.1.Q1)

➤ Content Slides: **UNCHANGED**

➤ Review Questions: **Modified**

New Method: Similar to the Quick Write questions at the beginning of the lesson, we chose to take advantage of the new text entry mode by **converting all open-ended questions into Short Answer TPC questions**.

This gives instructors the flexibility to utilize the NXT devices to collect and view short answer responses during class OR utilize the Randomly Select Student application to gain verbal feedback from the audience.

Flying squirrels don't have wings, but they do have flaps of skin between the legs on each side of their body. These flaps allow them to "fly" from tree to tree or from a tree to the ground.

To which flying device would you compare a flying squirrel and why?

Note to Instructors:
Click the Show/Hide Response Display Button



(AS100-U1C11.1.Q9)

➤ Summary & Next Slides: **UNCHANGED**

➤ Vocabulary Questions: **NEW**

New Method: The complete deck of **Vocabulary Questions** reside at the end of the original PPT lesson giving you the ability to poll your cadets on these questions if you choose.

Plus, you can return to the **Vocabulary Question Slide Index** at any time by clicking the Home button on the bottom of any Vocabulary Questions slide.

A device intended to slow free fall from an aircraft or another high point (p. 7)

- A. Flight
- B. Parachute
- C. Kite
- D. Gunpowder
- E. Rocket

(AS100-U1C11.VQ1)

➤ Team Assignment (HIDDEN): **NEW**

New Feature: Discussed in detail in CH 5: Competitions on pg. 41.



➤ Leaderboards (HIDDEN): **NEW**

New Feature: Discussed in detail in CH 5: Competitions on pg. 41.

Leaderboard

Points	Participant	Points	Participant
10	10		
10	13		
10	16		
10	19		
10	22		
10	23		
10	3		
10	9		
0	1		
0	11		

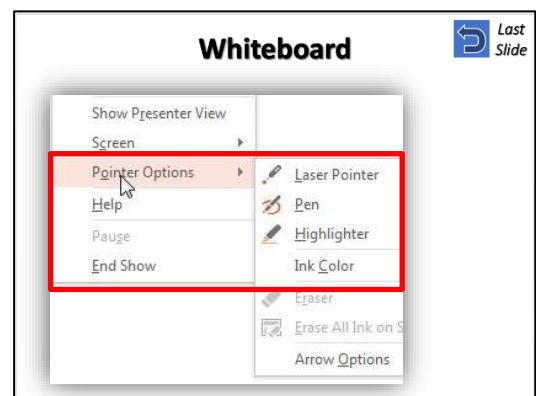
➤ Whiteboard (HIDDEN): **NEW**

New Feature: This plain white slide gives instructors a blank whiteboard to write on using their Mobi and the built-in annotation tools of PPT.

To access, right click while in Slideshow mode and go to the Whiteboard Section.

Then access the writing tools by right-clicking and selecting the Pen or Highlighter in the Pointer Option window.

Use the icon in upper-right to return to last slide.



The PowerPoint Polling Showbar

The showbar appears when a polling slide is displayed during the Slide Show. The showbar is a toolbar that provides buttons for polling, monitoring, viewing responses and other polling tools during the Slide Show. The showbar can be moved if a different screen position is preferred.



Figure 21: PowerPoint Polling Showbar

The following table provides a description for each button on the showbar:

	Minimize Showbar - When the showbar is minimized, the responses, polling status and maximize showbar button is displayed.	
	Toggle Response Count - Toggle Response Count changes the values displayed on each chart. The values can be represented as response counts or percentage of votes.	
	Repoll Question - Repoll Question clears the responses and accepts new responses from the participants for the currently displayed question. Both the original responses and the new responses are stored in the session file.	
	Response Display - The Response Display button displays the participants and their responses to the question while polling is open. This information is displayed in real-time.	
	Show/Hide Response Grid - The Show/Hide Response Grid toggles a response grid indicating which participants have responded. The visual display is controlled in the PPT preferences.	
	Countdown Timer - Automatically launches a countdown timer with Pause, Increase, and Decrease time options; 30 second default.	
	Insert New Question - Select a slide type from the drop-down menu to be inserted into the presentation.	
	Attendance - Opens the Attendance Poll window.	
	Set Anonymous - Makes the current slide anonymous. Participant information will not be associated with the results.	
	Delete Last Question Polled - This option deletes the response data from the current question. This does not reset the chart, and the original results may be viewed in PowerPoint but the response data is not saved with the session.	
	Data Slice - Data Slice allows the chart to display only the section of responses that correlate to chosen responses from previous slides.	
	View Original Chart - Use this command after using the Toggle Response Count or Data Slice commands to return the chart to its original appearance.	
	Display Participant Monitor - Display Participant Monitor opens the participant monitor.	
	Show/Hide Connection Info - Show/Hide Connection Info displays the ResponseCard channel number. The ResponseWare login information is also displayed if applicable.	
	Display Messaging Window - Display Messaging Window opens the feedback monitor.	
	Responses - Responses displays the number of participants that have responded to the current question.	
	Display Polling Status - Polling Status displays the current polling status	

9

Save Session (optional).

- Saving the session data enables you to generate reports and manage results.

Saving a PowerPoint Polling Session

Prerequisites: An audience must be polled with a PowerPoint presentation that contains polling slides.

1. From the TurningPoint Cloud ribbon, click the **Save** icon and select **Save Session**.



- **WARNING:** Saving the PowerPoint presentation through PowerPoint **does NOT** save the session data!
 - Session files should be stored in the default save location (on your RF Receiver).
 - If the session is saved in another location, it will then need to be placed in the TurningPoint Cloud Sessions folder or manually imported into TurningPoint Cloud.
2. Name the session file and click **Save**.
 - By default, TPC will time and date stamp your sessions, but you can choose to rename to something easier to remember if you prefer.
 3. Close **PowerPoint** to return to the **TurningPoint Cloud Dashboard**.



10

Generate Reports (optional).

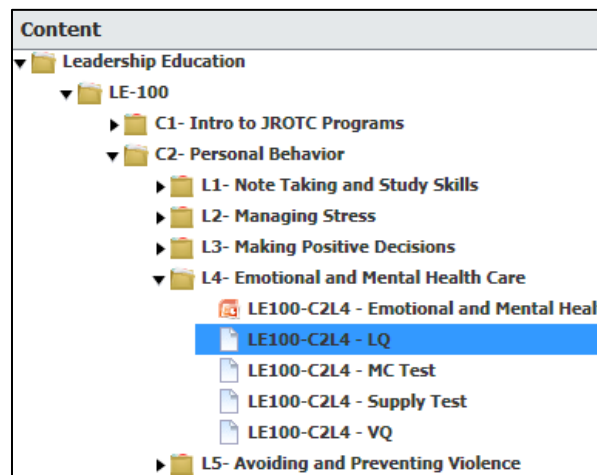
- Now that the session has been saved, reports can be generated and the results can be managed.
- We will take a closer look at Reports in Chapter 4.

Task #2: Engage Anywhere Polling (10 Steps – Detail)

Many of the steps outlined in the 10-Step documents are identical between polling environments, so rather than repeating steps covered earlier, we will refer back to where those steps were discussed originally.

- 1 Plug in Receiver.  pg. 20
- 2 Open and Log into TurningPoint Cloud.  pg. 20
- 3 Verify Connection (Receiver and/or ResponseWare). pg. 20
- 4 Select Participant List (optional). pg. 21
- 5 Select Content (optional).

➤ From the TurningPoint Cloud Dashboard, select a **Question List** below **Content**.



- 6 Click Anywhere Polling.

➤ The **Anywhere Polling Showbar** will appear. (Figure 22)

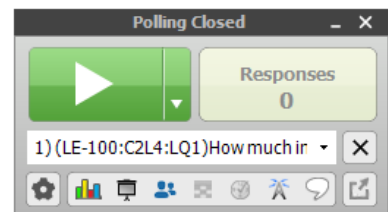


Figure 22: Anywhere Polling Showbar

7 Click Start to open polling.

➤ Click the **Open button**  to open polling.

- Clicking the Open button automatically opens polling with the first question in the question list.

8 Click Stop to close polling.

➤ Click the **Close button**  to close polling and display results. (Figure 23)

- To advance to the next question, simply open polling.
- If you would like to select a question out of order, select the drop-down menu next to the Open button.

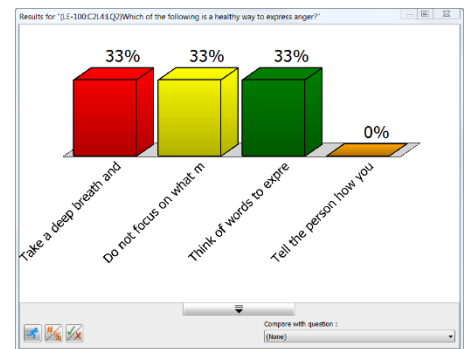


Figure 23: Anywhere Polling Chart

9 Save Session (optional).

➤ When polling is finished, you can click the **Options Icon** , (Figure 24) mouse over **Session** and select **Save Session**.

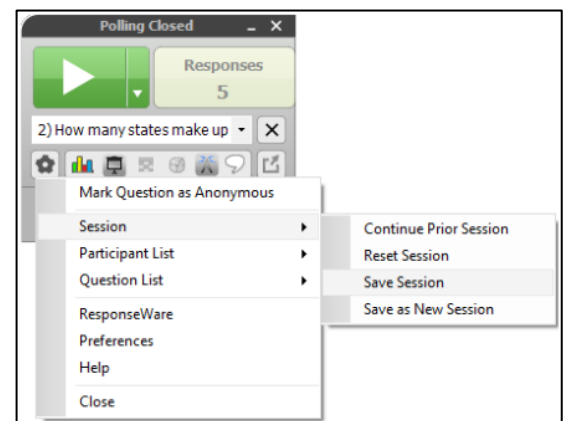

















Figure 24: Anywhere Polling Options

10 Generate Reports (optional).

- Now that the session has been saved, reports can be generated and the results can be managed.
- We will take a closer look at Reports in **Chapter 4**.

About the Anywhere Polling Showbar

The Anywhere Polling showbar provides access to several features that may be used while polling.

	Open Polling - The Open Polling icon allows participants to respond to a question.
	Close Polling - The Close Polling icon closes polling and opens the chart window.
	Quick Poll Menu - The Quick Poll Menu contains a list of generic questions that can be used to poll the participants. The custom question option allows a user to enter their own question and answer text. The Attendance Poll is also accessed through this menu.
	Responses - Responses displays the number of devices that have responded to the current question.
	Question List - When a Question List is selected for polling, the questions can be viewed from the dropdown menu. Click the X to close the question list view.
	Options - From the Options menu a user can perform the following tasks: <ul style="list-style-type: none"> • Mark a question as anonymous • Delete last question polled • Access session options such as save, reset and continue • Access the Real-Time Registration Tool • Access question list options such as view and close • Connect with ResponseWare • Open the Preferences • View the help file • Close the application
	Show/Hide Chart - The Show/Hide Chart button toggles the display of the chart window.
	Show/Hide Presentation - The Show/Hide Presentation button toggles the display of the presentation window. Questions and answers from the question list are displayed in the presentation window. If a question list is not loaded, the question number and response choices are displayed.
	Response Display - The Response Display button displays the participants and their responses to the question while polling is open. This information is displayed in real-time.
	Show/Hide Response Grid - The Show/Hide Response Grid button toggles the display of a response grid on the screen to indicate which participants have responded.
	Countdown Timer - The Countdown Timer button displays a countdown timer. Once the countdown reaches zero, polling is closed.
	Show/Hide Connection Info - The Show/Hide Connection Info button toggles the display of the connection information for IR receivers, RF channels and ResponseWare Session IDs.
	Show/Hide Messaging - The Show/Hide Messaging button opens and closes the messaging window.
	Minimize/Maximize Showbar - The Minimize/Maximize Showbar toggles the showbar to display only the Open/Close Polling button, the responses and the Maximize button. 

Polling Over Any Application or On-the-Fly Questions

You can also ask On-the-Fly or Verbal Questions (similar to CPS) while in Anywhere Polling. The steps are identical to running Anywhere Polling with a Question List (pgs. 30-31) outside of needing to select Content (Step 4).

1. Click **Anywhere Polling**.
 - The Anywhere Polling Showbar will appear. (Figure 24)
 - **OPTIONAL:** Open the application/content to be polled, if polling on top of an application.
2. Click the **Open button** on the Anywhere Polling showbar to open polling.
 - By default, a MC4 question is launched when you press the Open button. To select a different question type (MC2-10, Short Answer, Numeric, etc.) click the **Quick Poll menu** to the right of the **Open button**.
 - **TIP:** To zoom in or out of the Anywhere presentation window, right-click on presentation window background and select Zoom In or Zoom Out.
3. Click the **Close button** on the Anywhere Polling showbar to close polling and display results
 - **OPTIONAL:** Right-click/Control-click on the correct answer choice to select a correct answer. (Fig 25)
4. Repeat steps 2 and 3 for the remaining questions.
5. When finished, **Close** the Anywhere Polling application.
 - A message appears stating that the current session contains unsaved response data.
6. Click **Save**.
7. **Name the session** and click **Save**.
 - The Anywhere Polling application closes and the TurningPoint Cloud Dashboard opens.

Quick Poll Question Types

There are several **Quick Poll question types** (Figure 25) available for Anywhere Polling. To use a Quick Poll question, click the Quick Poll Menu and select the desired question type.

- Custom
 - Allows up to 10 answer choices, can type question & answers in
- Multiple Response
- 2 - 10 Answers
- Short Answer
- Numeric Response
- Essay
- Demographic Assignment
- Demographics Assignment (competition)
- Attendance

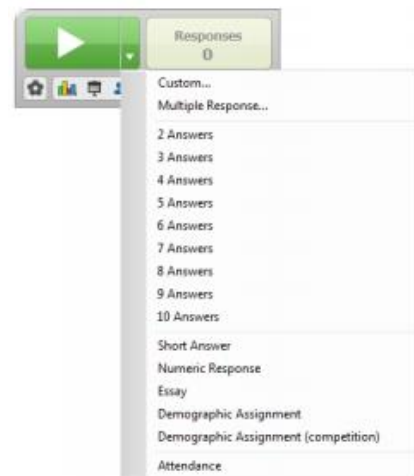
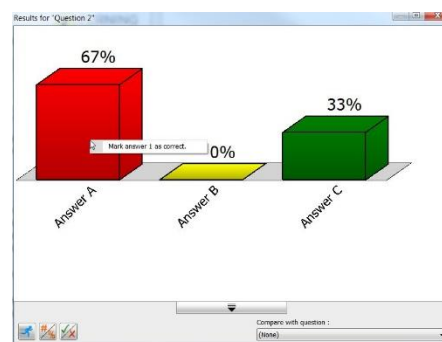


Figure 25: Quick Poll Question Types

About the Chart Window

The chart window displays the participant results. The window can be moved, resized, expanded and collapsed. Depending on the current question data, some buttons may not be visible or usable.

- **TIP** Right-click on a bar of the chart to mark the answer as correct.



	Show/Hide Chart Options - The Show/Hide Chart Options button toggles the display of the chart options.
	Compete - The Compete icon gives the instructor the option to view the following items: <ul style="list-style-type: none"> • Team Leaderboard- The team leaderboard displays the top teams ranked by their total points. The team's points are the average of the team's participants' points. • Participant Leaderboard- A participant leaderboard displays the top individual participants ranked by their total points. • Fastest Responders- The fastest responders slide displays the individual participants who responded correctly and fastest to the most recent question. This feature requires a correct response or point value.
	Response Data View - The Response Data View icon allows the instructor to change the data values shown on the chart window. Options include: 0% (Percentage: No Decimal Places), 0.0% (Percentage: One Decimal Place), 0.00% (Percentage: Two Decimal Places) and 0 (Response Count).
	Correct and Incorrect Comparison - The Correct and Incorrect Comparison icon toggles the chart colors to reflect red for incorrect response answers and green for correct response answers. Clicking this button again returns the chart to its original view. Correct answers can be set by clicking on the answer choice(s) that are correct. They can be toggled to incorrect if necessary.
	Compare with question drop-down menu - The Compare with question drop-down menu allows the instructor to compare the results of the current question with results from a previously answered multiple choice question.
	Chart - When showing short answer and numeric response results, a toggle icon for charts and tables is displayed. The chart will display a graph of responses collected.
	Table - The Table icon displays a table of responses and the number of participants that responded with that answer.

Task #3: Engage Self-Paced Polling (10 Steps – Detail)

The Self-Paced Polling environment allows participants to take a paper-based test on an NXT or RF Pulse ResponseCard.

New Term: Self-Paced Polling is similar to a **CPS Test** or **Student Managed Assessment**.

Many of the steps outlined in the 10-Step documents are identical between polling environments, so rather than repeating steps covered earlier, we will refer back to where those steps were discussed originally.

1 Plug in Receiver. 

pg. 20

2 Open and Log into TurningPoint Cloud. 

pg. 20

3 Select Participant List (optional).

pg. 20

4 Select Content.

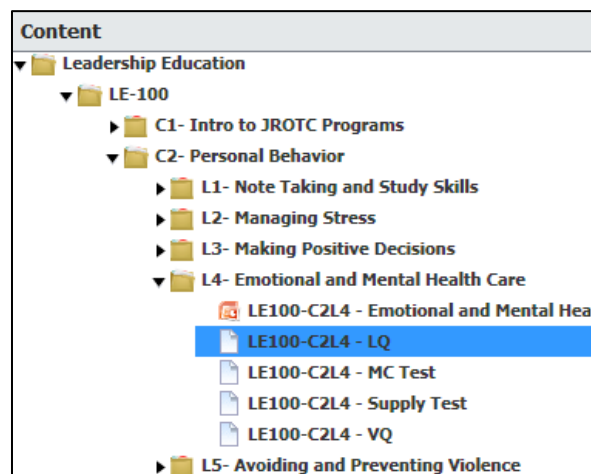
pg. 21

5 Click Self-Paced Polling



TPC Video Tutorial:
[NXT in Self-Paced](#)

➤ From the TurningPoint Cloud Dashboard, select a **Question List** below **Content**.



6 Click Accept Logins.

- Select the login option from the Participant Login drop-down menu. (Figure 26)
- Select the test time from the Time Limit drop-down menu.
- Select the message to be sent to participants from the Completed Test Message drop-down menu.
- Click OK. At this time participants may log into the test.

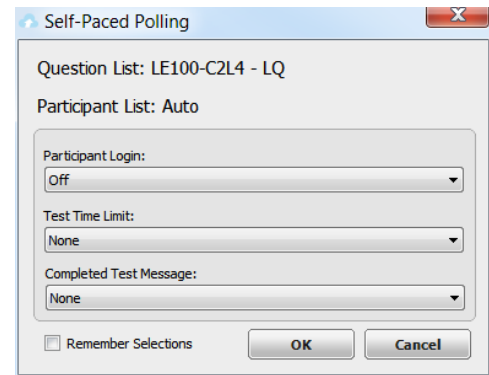


Figure 26: Accept Logins Menu

7 Click Start Polling.

- **IMPORTANT:** Once Polling has begun, have cadets press any button on their clicker to wake it up and enter Test Mode.
 - A number of menus will flash on their NXT device.

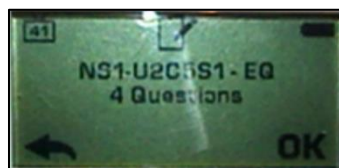


Welcome Screen



Battery Check

- Once cadets reach the Test Title and # of Questions screen, instruct cadets to press the menu button under OK (on the right side) to Enter the Test.

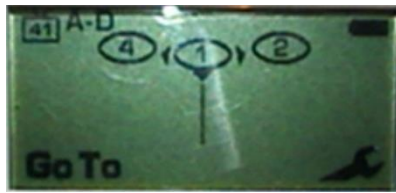


Test Title & # of Questions



Entering Test

- Students may now begin the test using the Function Keys (under the LCD screen), the black Number Pad keys, or keyboard



**Question Carousel
(unanswered)**



**Question Carousel
(answered)**

View Live Results Monitor

The Live Results Monitor provides real-time information about the test. The monitor displays which questions each participant has answered and whether they responded correctly or incorrectly. There is also an option to view the overall progress for the entire test.

- While a test is being administered, click the **Live Results** icon on the Self-Paced Polling toolbar.
 - The **Live Results Monitor** window opens. (Figure 27)



Figure 27: Accept Logins Menu

Status	Device ID	First Name	Last Name	User ID	Version	Progress	Score	1	2	3	4	5
▶	1	Jon	Jones	584334		5 / 5	5	5	✓	✓	✓	✓
▶	2	Sally	Smith	864563		5 / 5	5	5	✓	✓	✓	✓
▶	3	Mark	Johnson	879451		5 / 5	5	5	✓	✓	✓	✓
▶	4	Harrison	Brown	841564		5 / 5	5	5	✓	✓	✓	✓
▶	5	Lenore	Richardson	695466		4 / 5	4	4	✓	✓	✓	-
▶	6	Gary	Schoop	851585		4 / 5	4	4	✓	✓	✓	-
▶	7	Lily	Simpson	984168		4 / 5	4	4	✓	✓	✓	-
▶	8	Jessica	McBride	321688		3 / 5	3	3	✓	✓	✓	-
▶	9	Jennifer	McBride	789834		3 / 5	3	3	✓	✓	✓	-
▶	10	Lucas	Schwartz	318944		3 / 5	3	3	✓	✓	✓	-

✓ = Correct ✗ = Incorrect ○ = No Value - = No Response

- Click **Individual Progress** to view progress by participant.
 - The test version, score and overall progress for each participant is displayed.
 - A **green check mark** indicates the participant answered the question correctly.
 - A **red X** indicates the participant answered incorrectly.
 - A **dash** represents an unanswered question.
 - A **circle with a line through it** indicates the question had neither a correct or incorrect answer value.
 - Hover the mouse over the check marks, X or circle to see the participant's response.**
- Click **Overall Progress** to view progress by test version.

- The test version numbers are listed, as well as the average number of answered questions and the average score. The statistics for the entire test are displayed at the bottom of the window.
- Once finished, participants will see the Completion Screen (Figure 28) and have options to:
 1. **Return** to the questions to change/confirm answers.
 2. **Save/Send** tests and Exit the clicker out of testing mode.
 - **IMPORTANT:** Make sure all clickers have submitted their test and are out of testing mode before using clickers with another class.



Figure 28: Self-Paced Mode – Completion Screen

8 Click Stop Polling.

- Click **Stop Polling** once all the results have been received.

9 Save Session (optional).

- Click the **Save** icon to save the session results.
- Name the session and click **Save**.
 - Session files should be stored in the default save location.
 - If the session is saved in another location it will then need to be imported into TPC.
- Close the application to return to the TurningPoint Cloud Dashboard.

10 Generate Reports (optional).

Chapter 4: Reports

Objectives – Tasks

- ❖ Task #1: Generate Reports
- ❖ Task #2: Export Reports
- ❖ Task #3: Save & Print PDF Reports
- ❖ Task #3: Report Descriptions

Task #1: Generate Reports

There are eight types of session reports. Each report can be customized by selecting the data options on the right side of the reports window.

1. From the Manage tab, select a **session** from the left panel.
 - The *Session Overview* screen is displayed. (Figure 29)
2. Click **Reports** at the bottom of the *Session Overview* screen.

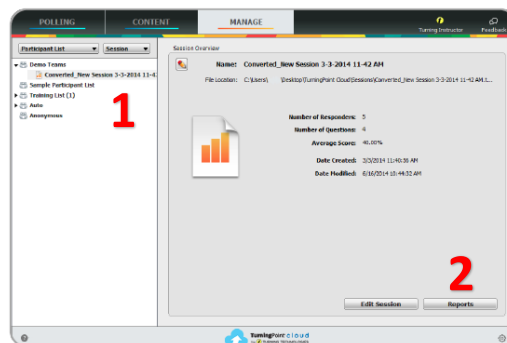


Figure 29: Session Overview

- **TIP:** Double-clicking the session name will also open the reports window.

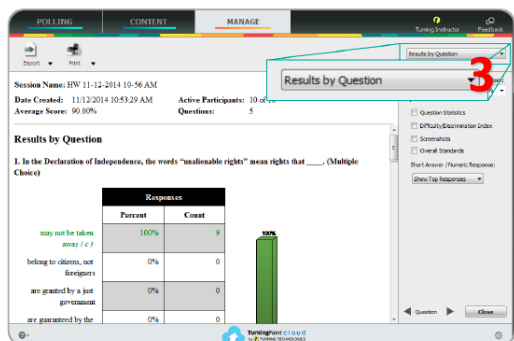


Figure 30: Report Window

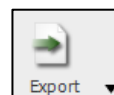
3. Select the report type from the drop-down menu in the upper right corner. (Figure 30)

- The report session header appears on all reports.
- The session header includes the session name, date created, active participant count, average score and the question count.

Task #2: Export Reports

Reports can be exported as a CSV, Excel or HTML file.

1. While in the *Reports* window (Figure 30), click the **Export**



icon and select one of the

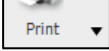
- **CSV-** CSV files are plain text files that can be opened with various programs.
- **Excel-** Saves the file as a Microsoft Excel spreadsheet with native Excel charts for manual manipulation.

- **HTML**- HTML files can be opened with an Internet browser.

2. **Name** the file and click **Save**.

Task #3: Save & Print PDF Reports

TurningPoint Cloud allows the user to print a hard copy of the reports. The reports are printed as PDF files.

1. While in the Reports window (Figure 30), click the **Print icon**  and select **Print**.
 - **TIP:** Select **Preview** to view the report before printing or to save the report as a PDF.
2. Make any necessary adjustments in the Print window.
3. Click **Print**.

Task #4: Report Descriptions

Results by Question

The default Results by Question report (Figure 31) displays the following elements:

Question text	Answer choices	Chart
Question type	Responses (percentage and count)	

Checking the boxes in the right panel adjusts the details of the report. Selections will be remembered for future use.

- **Question Statistics**- Adds a table to the report under each question that displays the Mean, Median, Variance and Standard Deviation for each question.
- **Screenshots**- Displays the screenshot with each question.
- **Overall Standards**- Displays the percentage of overall comprehension for each standard.
- **Short Answer/Numeric Response**- Gives the option to choose between displaying only the top responses for Short Answer and Numeric Response questions, or to display all valid responses. Click the drop-down menu to show all responses.

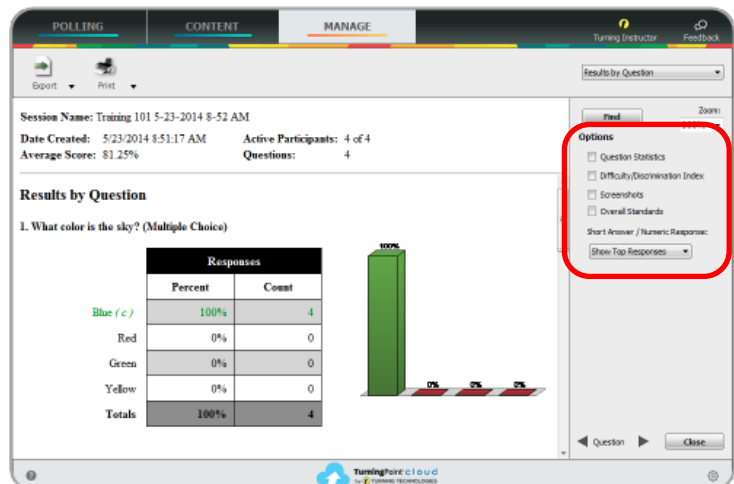


Figure 31: Results by Question Report

Results by Participant

The default Results by Participant report (Figure 32) displays the following elements:

Participant information	Question text	Participant response
-------------------------	---------------	----------------------

- **TIP:** Printing this report will generate a page break in between each participant.

Checking the boxes in the right panel adjusts the details of the report.

- **Correct Answers-** Displays the correct answers for each question.
- **Answer Choices-** Displays all of the answer choices for each question.
- **Response History-** Displays each response sent by the participant for each question including invalid responses.
- **Response Times-** Displays the length of time (in seconds) that it took with the final recorded response(s). Response times will not display on merged sessions.
- **Overall Standards-** Displays the percentage of overall comprehension for each standard.
- **Active Participants Only-** Displays the results of the participants that responded to at least one question in the session. Participants that sent feedback or an invalid response are also displayed.

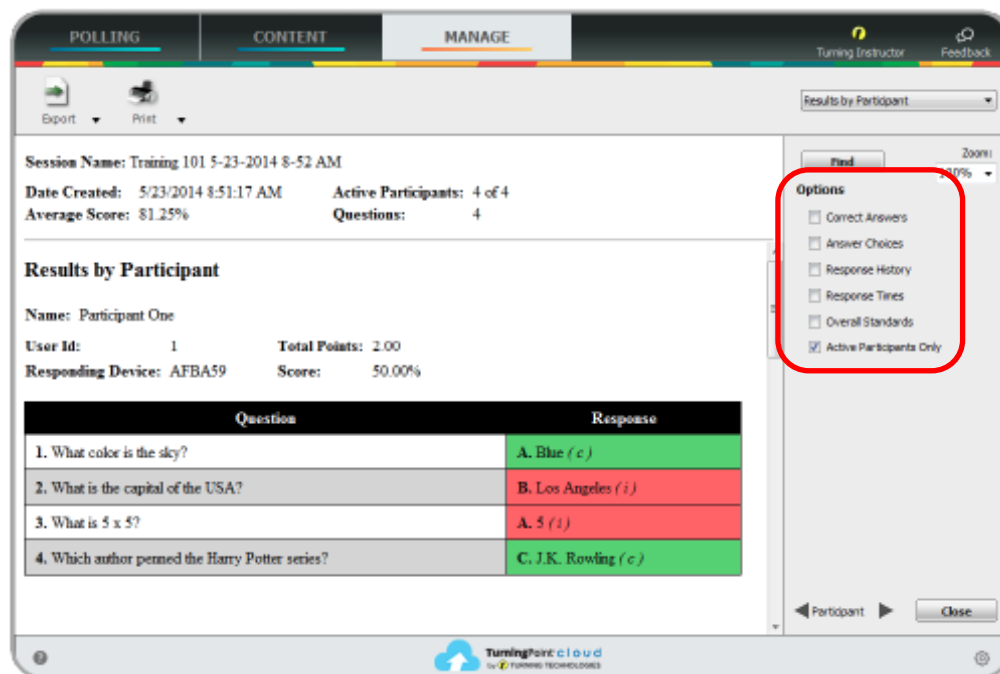


Figure 32: Results by Participant Report

Results Detail

The default Results Detail report (Figure 33) displays the following elements:

Participant information	Score (overall percentage)
Participant response	Participant list averages (points and percentage)
Participant points earned	Answer Key

Checking the boxes in the right panel adjusts the details of the report.

- **Participants**- Select the type of participant information to be displayed.
- **Active Participants Only**- Displays the results of the participants that responded to at least one question in the session. Participants that sent feedback or an invalid response are also displayed.
- **Question Results**- Answer displays the question/answer columns and the answer key row. Scores displays the question/answer columns and the maximum points row.
- **Expand**- Widens the question/answer columns to display values longer than three characters.
- **Total Points**- Displays the Total Points column.
- **Score**- Displays the Score column.

Session Name: Training 101 5-23-2014 8-52 AM
 Date Created: 5/23/2014 8:51:17 AM Active Participants: 4 of 4
 Average Score: 81.25% Questions: 4

Results Detail

Last Name	First Name	Q1	Q2	Q3	Q4	Total Points	Score
Answer Key		A	C	B	C	4	100.00%
One	Participant	A	B	A	C	2	50.00%
Two	Participant	A	C	B	C	4	100.00%
Three	Participant	A	A	B	C	3	75.00%
Five	Participant	A	C	B	C	4	100.00%
Participant List Averages		100	50	75	100	3.25	81.25%

Options

Participants

Participant Information:

- ☐ Device ID(s)
- ☐ Age
- ☐ Gender
- ☒ Last Name
- ☒ First Name
- ☐ User ID

☒ Active Participants Only

Data

Question Results:

Answers

- ☐ Expand
- ☒ Total Points
- ☒ Score

Close

Figure 32: Results by Participant Report

Chapter 5: Competitions

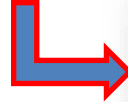
Competition slides keep track of the participants or teams with the most points and fastest responses. There are several slide types available for competitions. This chapter will focus on competition slides **already embedded** into your lesson PPTs.

NOTE: All TPC questions with correct answers have been given a value of 10 points.

Objectives – Tasks

- ❖ Task #1: Participant Leaderboard
- ❖ Task #2: Team Assignment
- ❖ Task #3: Team Leaderboard
- ❖ Task #4: Team MVP

Vocab Question
Slide Index




Task #1: Participant Leaderboard

A participant leader board displays the top individual participants ranked by their total points. This slide updates dynamically after each question.

New Competition: All Lesson Questions (with a correct answer) and Vocabulary Questions contain a **Top Score icon** (right) that hyperlinks to a pre-made **Participant Leaderboard** at the end of the PPT lesson. Any time you want to see which students are leading the way, simply click on the **Top Score icon** to be taken to the **Leaderboard** (below). To return, just click on the “Last Slide” icon in the upper-right.



Leaderboard			
			 Last Slide
Points	Participant	Points	Participant
20	Bravo, Sally		
20	Charlie, Bill		

- **TIP:** Press the tab key on the keyboard to view more participants in the participant list.

TPC Benefit #8: TPC's engaging and intuitive gaming functions allow ALL cadets to participate in clicker games, rather than just one per team. PLUS, the software is smart enough to average all participant's scores in case of uneven teams as well as track speed!

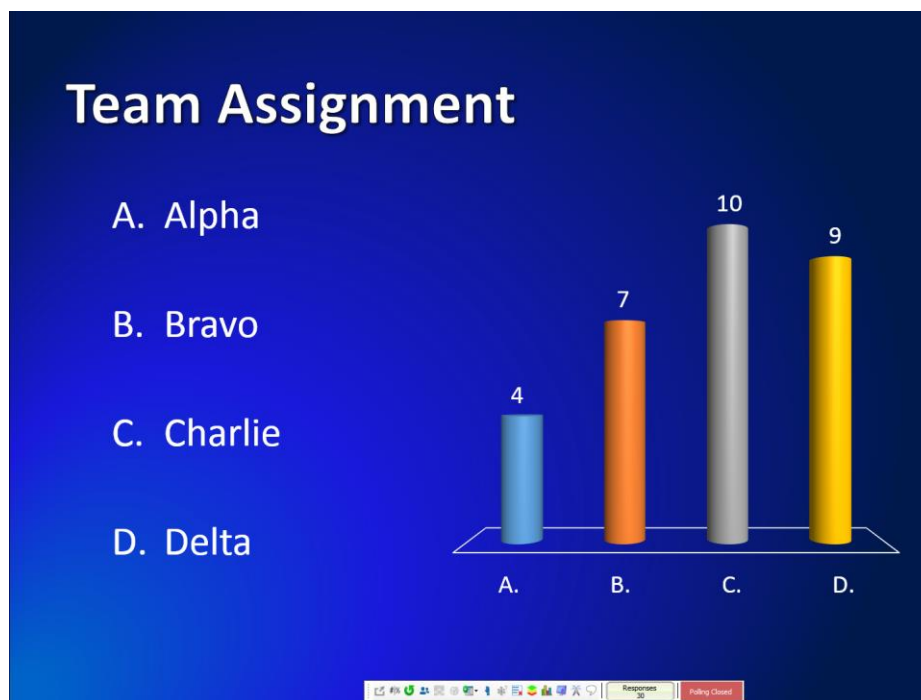
Task #2: Team Assignment

The team assignment slide assigns participants to teams for competitions and is also considered a demographic slide.

New Competition: The **Game icon** (right) lives in the lower-right corner of every **Vocabulary Question Slide Index**. When clicked it will take you to the **Team Assignment slide** (below).



Once teams are assigned, simply click through the Vocabulary Question deck allowing teams to respond!



- **TIP:** Team Names are Alpha, Bravo, Charlie and Delta by default. However, you can change them to whatever you would like; limit of 10!

Task #3: Team Leaderboard

The **Team Leaderboard** displays teams ranked by their total points. Team scoring works by calculating the point total for all of the participants on a team and then dividing it by the number of participants. The slide updates dynamically after each question.

New Competition: The **Team Leaderboard icon** (right) is on the bottom of every Vocabulary Question slide. When clicked it will take you to the **Team Leaderboard slide** (below) at the end of the PPT and allow you to easily return.



Team Scores			
Points	Team	Points	Team
16.67	Delta		
12.5	Bravo		



Last
Slide

Task #4: Team MVP

The **Team MVP** board displays the individual participant on each team with the most points. This feature requires the use of a participant list, teams and correct answers. The slide is updated dynamically after each question.

New Competition: The **Team MVP icon** (right) is also on the bottom of every Vocabulary Question slide. When clicked it will take you to the **Team MVP slide** (below) at the end of the PPT and allow you to easily return.









Team MVP		
Points	Team	Participant
30	Delta	17
20	Alpha	27



Last
Slide

Appendix 1: PresenterCard

PresenterCard is a wonderfully useful and simple tool that gives instructors the freedom of controlling their PPT presentation from anywhere in the room.

Button	Button Name	Function
	Start/Stop	Opens/closes polling
	Back	Moves backwards through a slide deck or question list
	Forward	Advances through a slide deck/question list
	Programmable Buttons 1-3	Performs a predetermined task within TPC;
	Show/Hide	Switches between the PowerPoint presentation and blank screen; or shows or hides all windows
	Channel	Places PresenterCard in programming mode



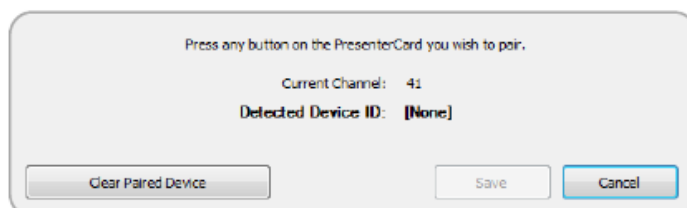
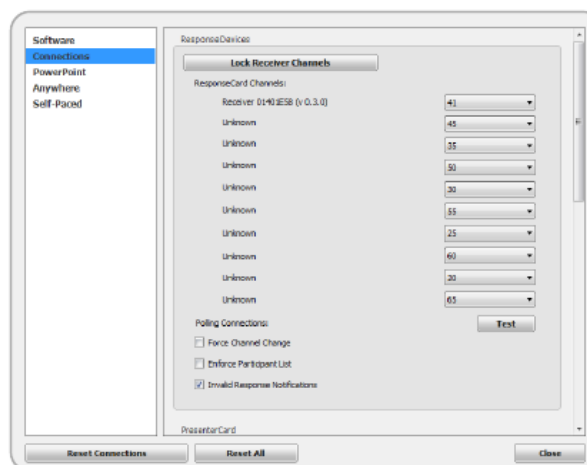
Pairing PresenterCard with TPC

1. **Plug in** the receiver, open TurningPoint Cloud and sign in to your Turning Account.
2. Click the **channel number** below *Receiver*.
 - The *Preferences* window opens.
3. Verify that the PresenterCard is programmed to the same channel as the receiver.

To change the channel on the PresenterCard:

- Press the **Channel** button on the PresenterCard.
- Use the **Back** or **Forward** buttons to select the correct channel number.
- Press **Channel** to save the new channel number.

4. Scroll to the *PresenterCard* section and click **Change** next to *PresenterCard Device ID*.
 - The *Pair PresenterCard* window opens.



5. Press any **button** on the PresenterCard.
 - The Device ID of the PresenterCard is displayed next to Detected Device ID.
6. Click **Save**.

The PresenterCard can now be used with the PowerPoint Polling and Anywhere Polling environments.

The PresenterCard programmable buttons have the capability to:

- Show, Play, or Pause the Countdown Timer
- Insert a Response/Non-Response Grid
- Display Connection Information
- Set a Polling Question as Anonymous
- Repoll the Current Question
- Toggle Between Percent or Count

in BOTH **PowerPoint** and **Anywhere Polling**.

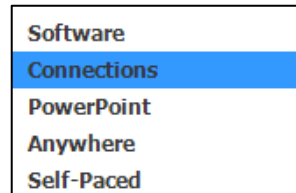
Configuring the PresenterCard Programmable Buttons

1. Open **TPC** and sign in to your **Turning Account**.

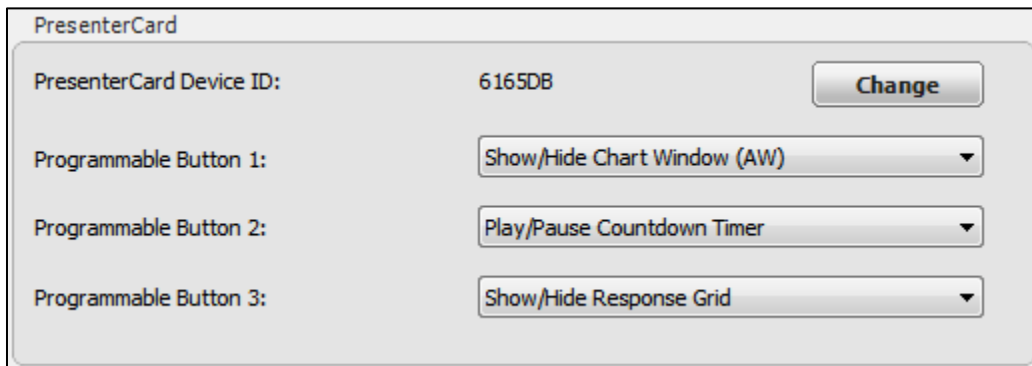
2. Select **Preferences**  from the lower-right hand corner of the **Dashboard**.

3. Select **Connections** from the left navigation pane.

4. Scroll to **PresenterCard** in the right navigation pane.



5. Click the drop-down menu next to **Programmable Button One** and select an action.



6. Repeat **Step Five** for the remaining programmable buttons.

7. Click **Done** when finished.

Appendix 2: Content Creation & Additional Resources

For those that would like to learn more about TPC, create their own interactive content, or dive deeper into gaming, here are some excellent resources:


<http://tinyurl.com/TPC-UG>

TurningPoint Cloud

User Guide for PC




6.1

<http://tinyurl.com/TPC-Training>



Welcome

We want you to get the most out of TurningPoint Cloud. Whether you're new to the software or hoping to learn more, the below resources were designed for your success.

 SEARCH SUPPORT / SUBMIT SUPPORT TICKET	 USER GUIDE	 INSTRUCTOR-LED TRAINING CLASSES
--	---	--

<http://tinyurl.com/TPC-QS-Guide>



TurningPoint Cloud

Quick Start Guide

<http://tinyurl.com/NXT-User-Guide>

ResponseCard® NXT

Quick Start *Presentation Mode*