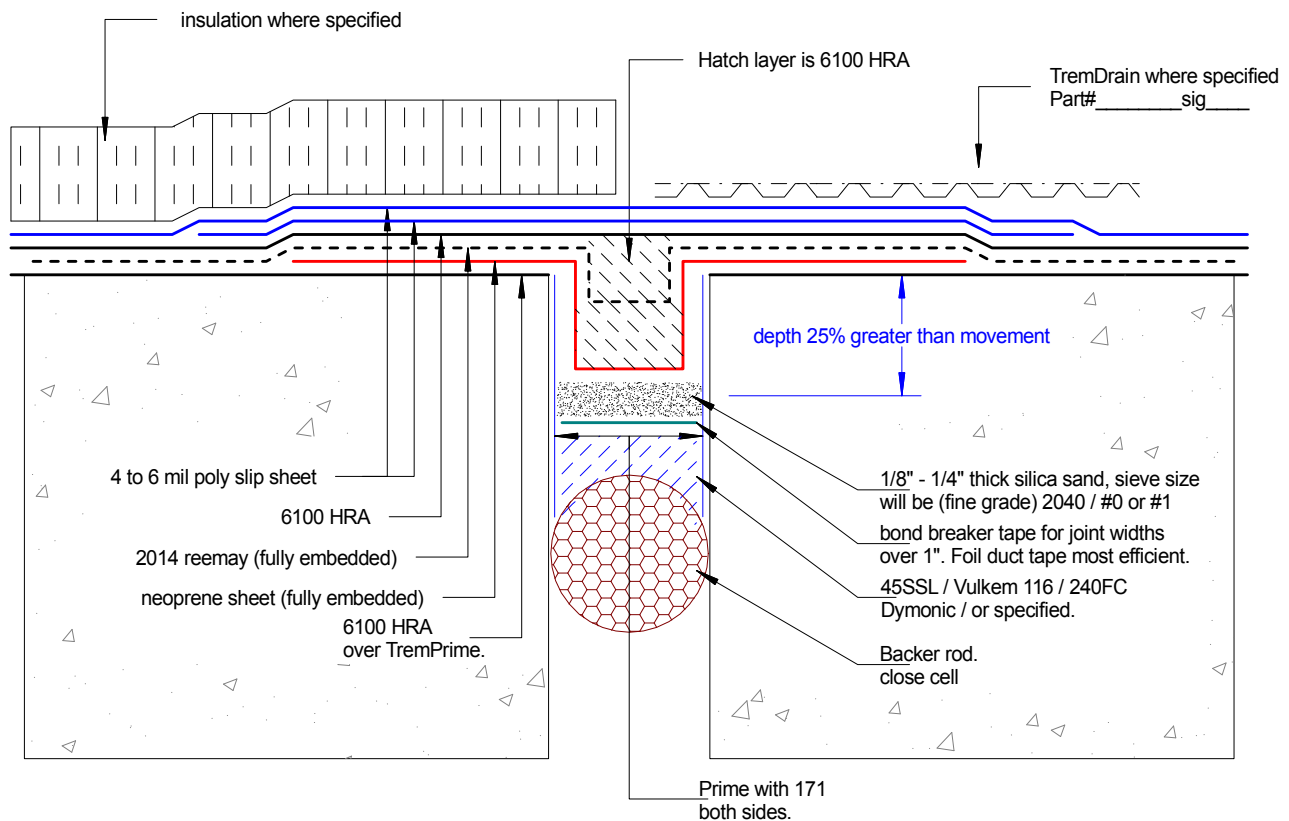




6100 HRA Expansion Loop Detail over backer and sealant.

detail>> D-1335-389A



Note: Sand shown in the drawing is a heat isolator to prevent HRA spill over from direct contact to sealants. The HRA will loose 100F in 7 to 12 seconds. Not enough time for the sand to heat up. The sand is also used as a bond breaker to the HRA membrane system.

6100 HRA should not intentionally be installed directly to the sealant. Apply the HRA to the horizontal deck only. Spill over will occur. Depth of the neoprene sheet should be calculated at 25% greater than the expected movement.

EXAMPLE: Expected movement 1" x 25% = 1.25" depth

Note: bond breaker tape is not normally used with fully cured 240FC.

Tremco Canada
6178 Netherhart Rd.
Mississauga, On.
L5T 1B7
Ph: 905-564-6100
Fax: 905-564-6110

Tremco Inc.
www.tremcosealants.com

Tremco Inc.
3735 Green Rd,
Beachwood, OH. USA
44122
Ph: 216-292-5000
Fax: 216-292-5036

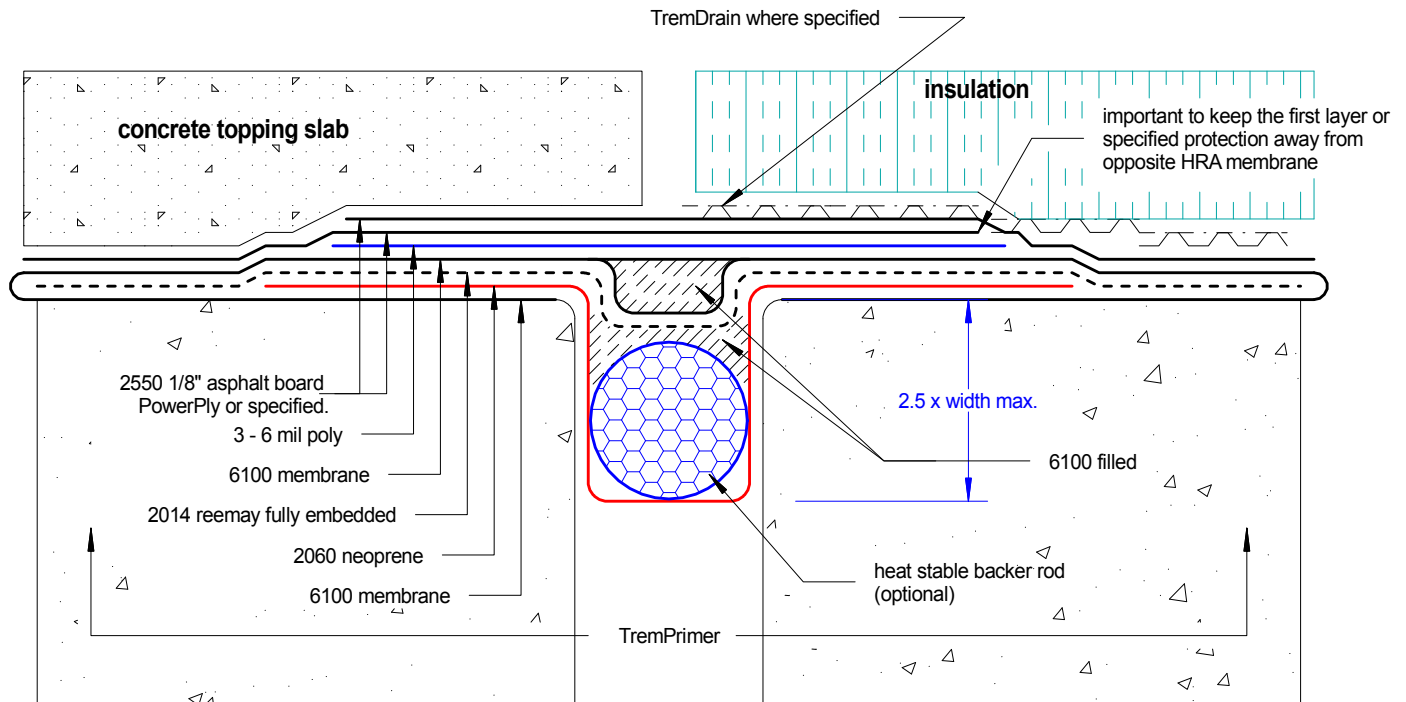
Date: Nov-29-2010		Drawing No. D-1335-389A
Drawn by: G.M.	Approved: <>	Scale:
Project:		

Project:



TP-6100 HRA membrane Looping detail >>shown : horizontal slab

D-741-1A



D-741-1A

Tremco Canada
6178 Netherhart Rd.
Mississauga, On.
L5T 1B7
Ph: 905-564-6100
Fax: 905-564-6110

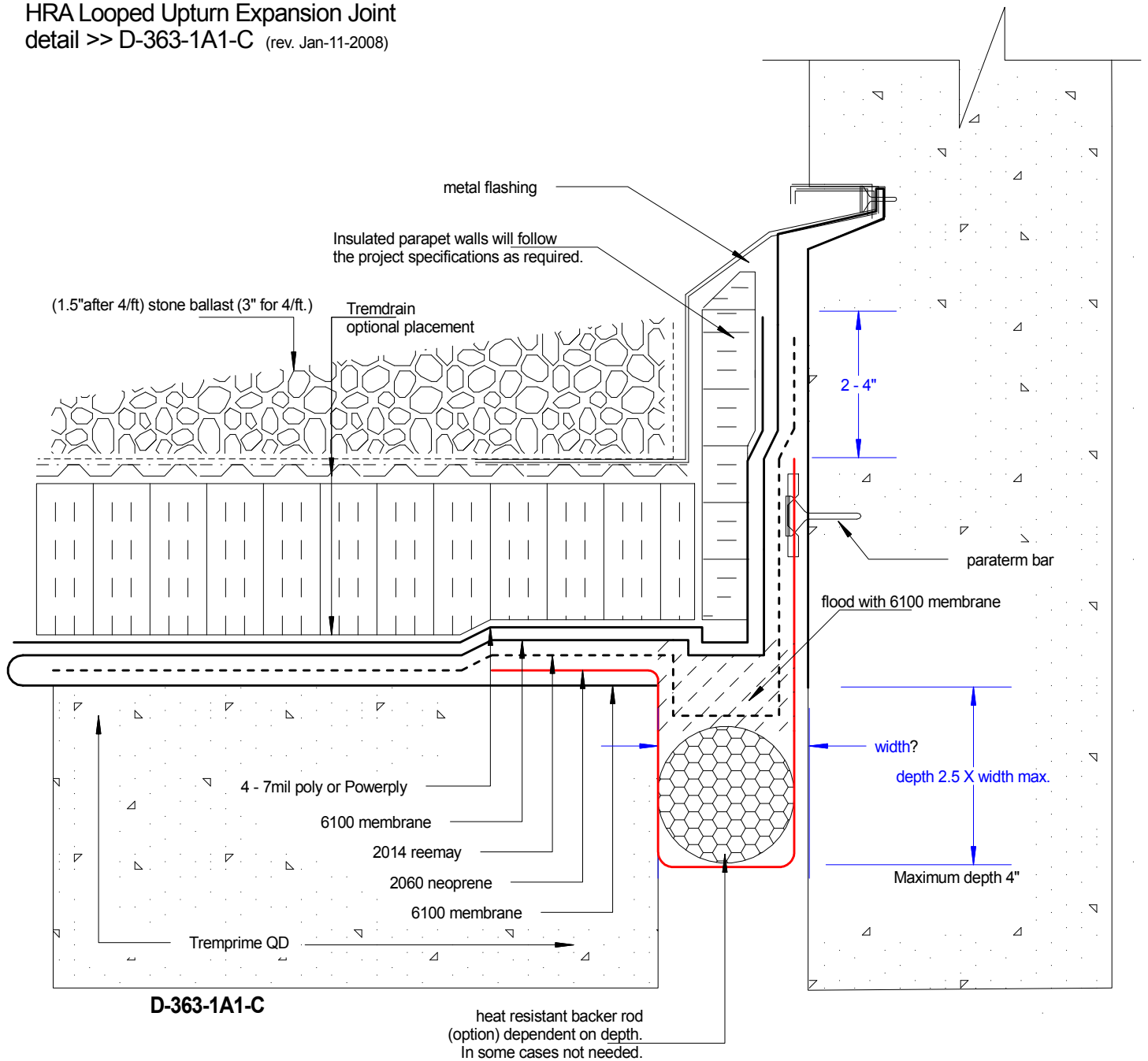
Tremco Inc.
www.tremcosealants.com

Tremco Inc.
3735 Green Rd,
Cleveland, OH. USA
44122
Ph:216-292-5000
Fax: 216-292-5036

Date: Jan-27-2008		Drawing No. D-741-1A
Drawn by: G.M.	Approved: <>	Scale:
Project:		



HRA Looped Upturn Expansion Joint
detail >> D-363-1A1-C (rev. Jan-11-2008)



Tremco Canada
6178 Netherhart Rd.
Mississauga, On.
L5T 1B7
Ph: 905-564-6100
Fax: 905-564-6110

Tremco Inc.
www.tremcosealants.com

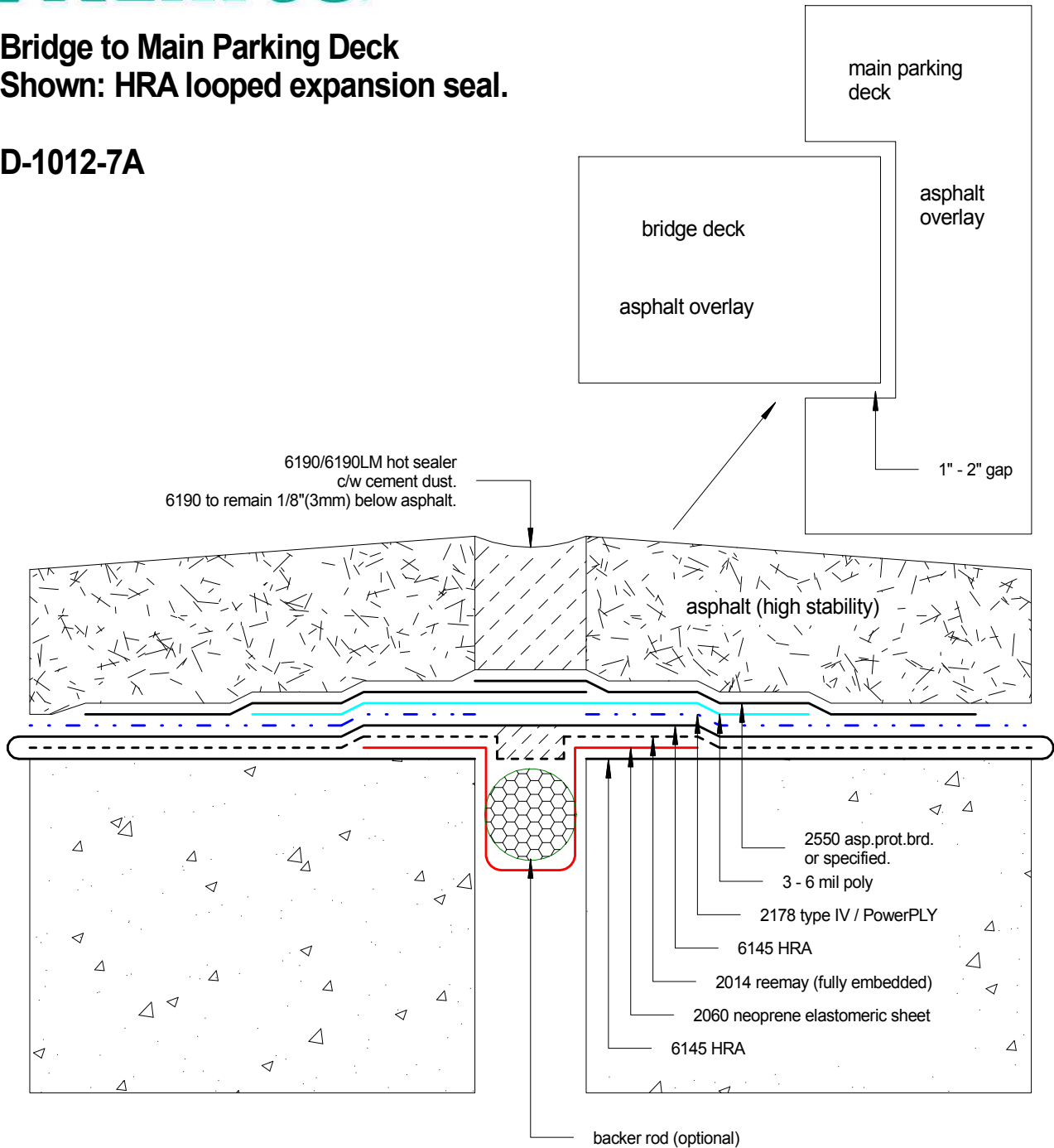
Tremco Inc.
3735 Green Rd,
Cleveland, OH. USA
44122
Ph: 216-292-5000
Fax: 216-292-5036

Date: Jan-11-2008		Drawing No. D-363-1A1-C
Drawn by: G.M.	Approved: <>	Scale:
Project:		



Bridge to Main Parking Deck
Shown: HRA looped expansion seal.

D-1012-7A



Tremco Canada
6178 Netherhart Rd.
Mississauga, On.
L5T 1B7
Ph: 905-564-6100
Fax: 905-564-6110

Tremco Inc.
www.tremcosealants.com

Tremco Inc.
3735 Green Rd,
Cleveland, OH. USA
44122
Ph: 216-292-5000
Fax: 216-292-5036

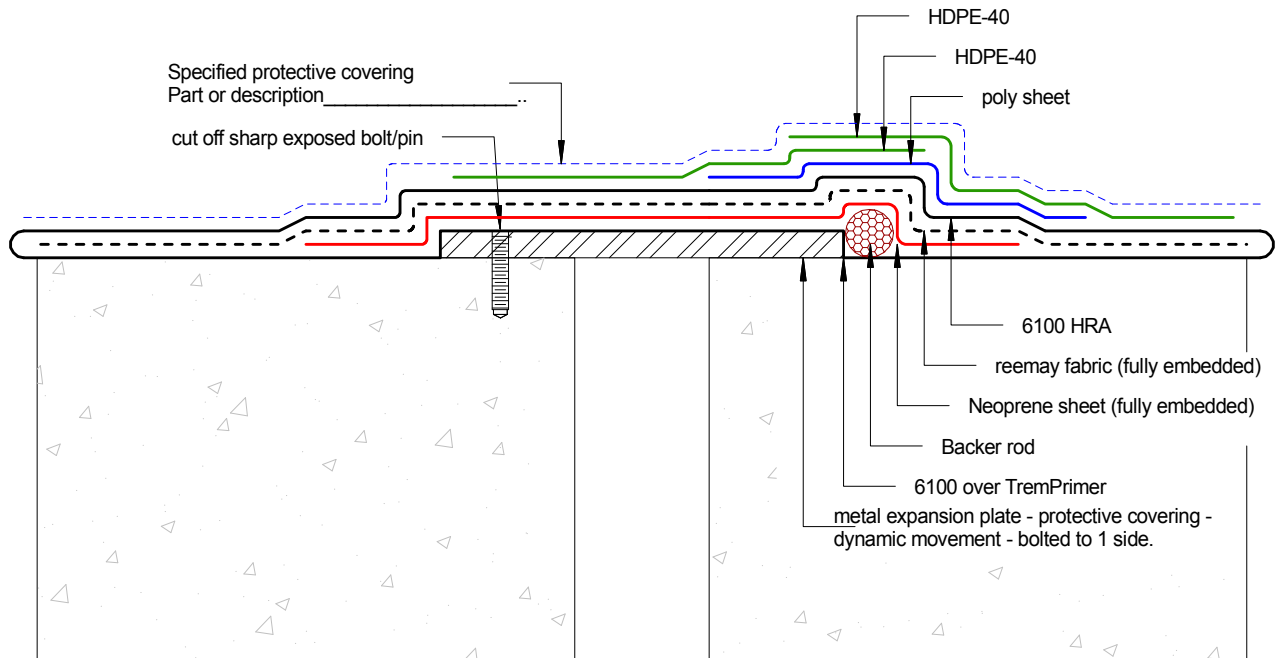
<u>Date:</u> Jan-28-2009		<u>Drawing No.</u> D-1012-7A
<u>Drawn by:</u> G.M.	<u>Approved:</u> <>	<u>Scale:</u>
<u>Project:</u>		

Project:



6100 Expansion Loop side of Expansion Plate Cover

detail>> D-1120-203A rev Jul-12-2011 (supercedes Mar-19-1998)

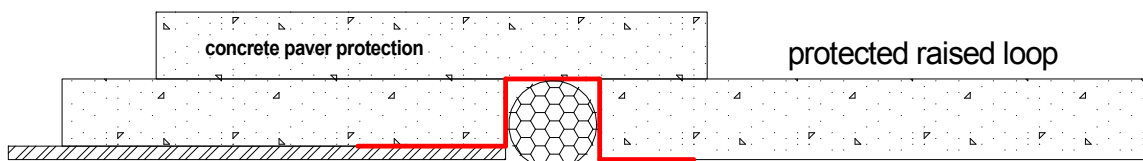


Draft for review

Note: Review of this detail must be done prior to Tremco approval. Reason, the compression/overburden limits the overall movement capabilities of all raised loop details. The loop becomes crushed under heavy loading. There is no further reference to this condition in Tek-Aid or any other engineering guide. Although this detail has been used successfully for years, it may require concrete pavers or cip curbs to be placed both sides of backer rod.

neoprene or butyl sheet

This neoprene is (S) shape configuration was used for years. It's been proven not to outlast warranties beyond 10 to 15 years. Reason, neoprene sheets which are considered "Un-Cured neoprene sheet" or "Butyl sheet rubber" has a tack due to its un-cured state. The sheet, over time, will actually stick to itself. Once the (S) loop bonds to itself, the expansion properties are nulled. Compression on (S) or "raised" loops can cut down on expansion movement capabilities by 90%.

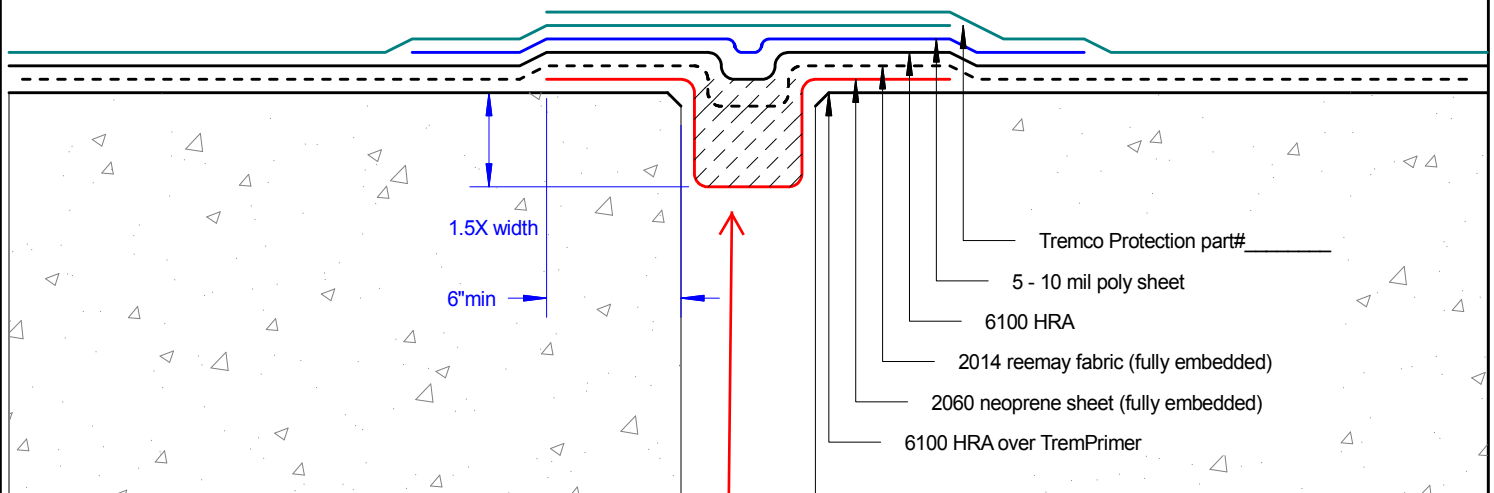




6100 HRA Fully Reinforced Expansion Loop

detail>> D-1319-224A

2" max gap.

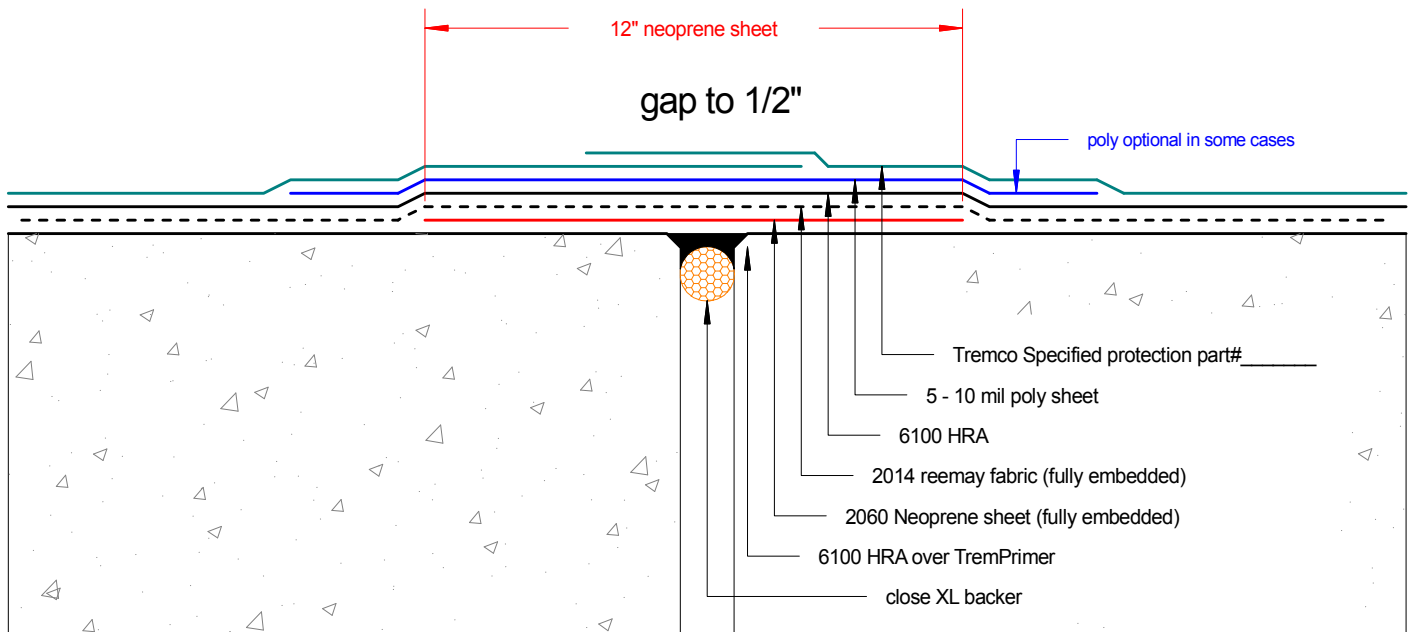


Depth of loop may have to be adjusted deeper if settlement occurs on one side. Max depth is 2.5x the gap width. Max deflection is 1"

12" neoprene sheet

gap to 1/2"

poly optional in some cases



Excessive movement may require backer and urethane sealant prior to HRA applications.

Tremco Canada
6178 Netherhart Rd.
Mississauga, On.
L5T 1B7
Ph: 905-564-6100
Fax: 905-564-6110

Tremco Inc.
www.tremcosealants.com

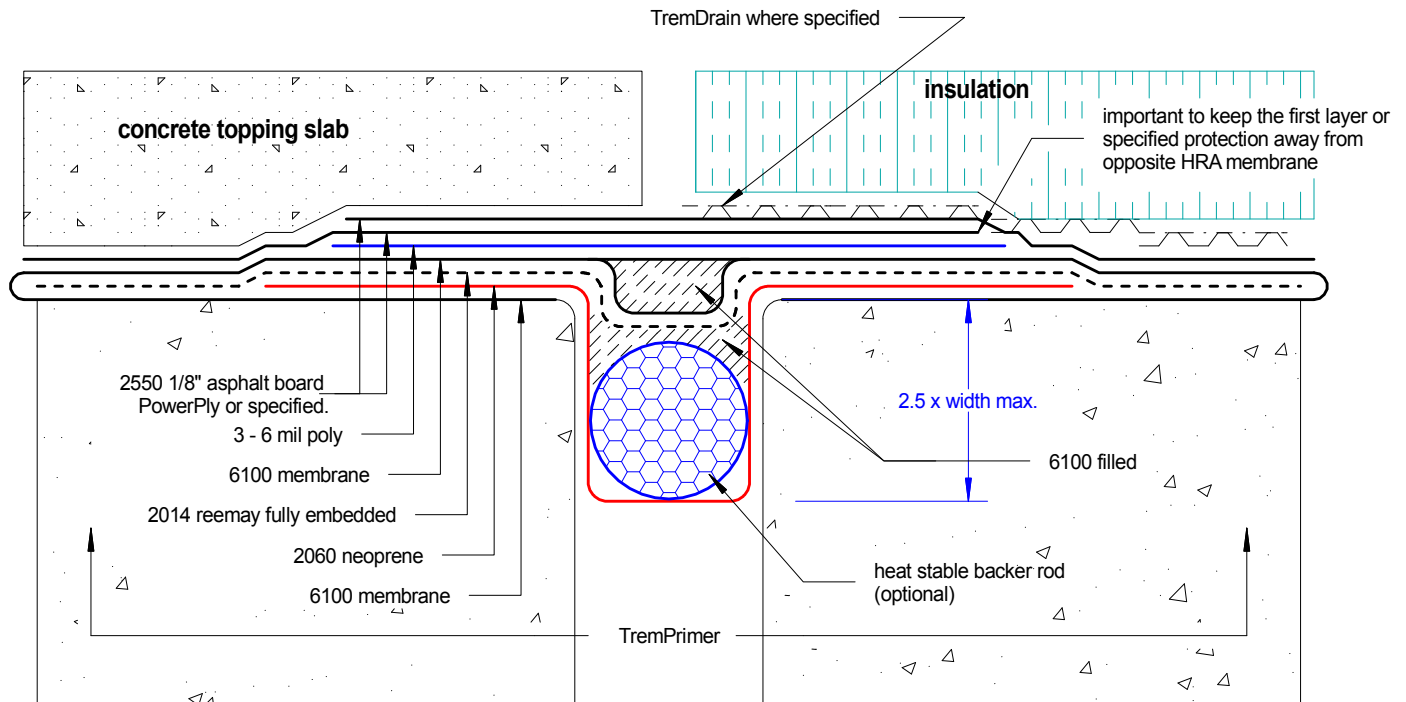
Tremco Inc.
3735 Green Rd,
Beachwood, OH. USA
44122
Ph: 216-292-5000
Fax: 216-292-5036

Date: Jun-8-2007		Drawing No. D-1319-224A
Drawn by: G.M.	Approved: <>	Scale:
Project:		



TP-6100 HRA membrane Looping detail
>>shown : horizontal slab

D-741-1A



D-741-1A

Maximum deflection for this detail is 12 mm (1/2")

Tremco Canada
6178 Netherhart Rd.
Mississauga, On.
L5T 1B7
Ph: 905-564-6100
Fax: 905-564-6110

Tremco Inc.
www.tremcosealants.com

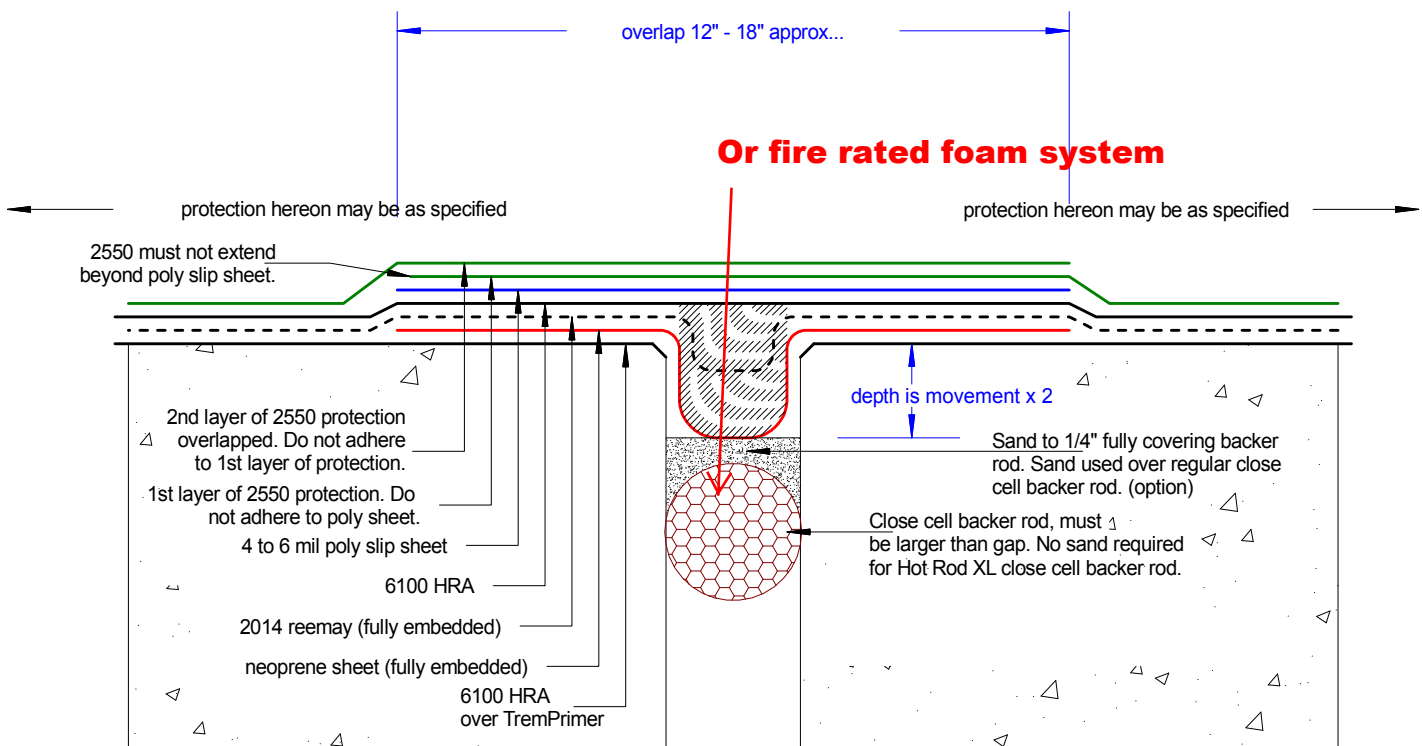
Tremco Inc.
3735 Green Rd,
Cleveland, OH. USA
44122
Ph: 216-292-5000
Fax: 216-292-5036

Date: Jan-27-2008		Drawing No. D-741-1A
Drawn by: G.M.	Approved: <>	Scale:
Project:		



**6100 HRA Expansion Loop over Sanded Backer Rod with option.
Option: Hot Rod XL heat stable close cell backer without sand.**

detail>> D-1461-322A



Note: If for any reason the expansion gaps are determined to move beyond 50% of the gap width, Tremco's HDPE-40 protection may be used in place of 2550 1/8" asphaltic protection board.

Example: 2" gap width. Movement calculated at 1.25". Use HDPE-40 protection sheet. Reason, HDPE-40 will take the expansion slide under greater movement. It's not subject to overburden friction pressure which causes overlapping protection systems to bind together.

Tremco Canada
6178 Netherhart Rd.
Mississauga, On.
L5T 1B7
Ph: 905-564-6100
Fax: 905-564-6110

Tremco Inc.
www.tremcosealants.com

Tremco Inc.
3735 Green Rd,
Beachwood, OH. USA
44122
Ph: 216-292-5000
Fax: 216-292-5036

Date:
Jul-9-2011

Drawing No.
D-1461-322A

Drawn by:
G.M.

Approved:
<>

Scale:

Project: