

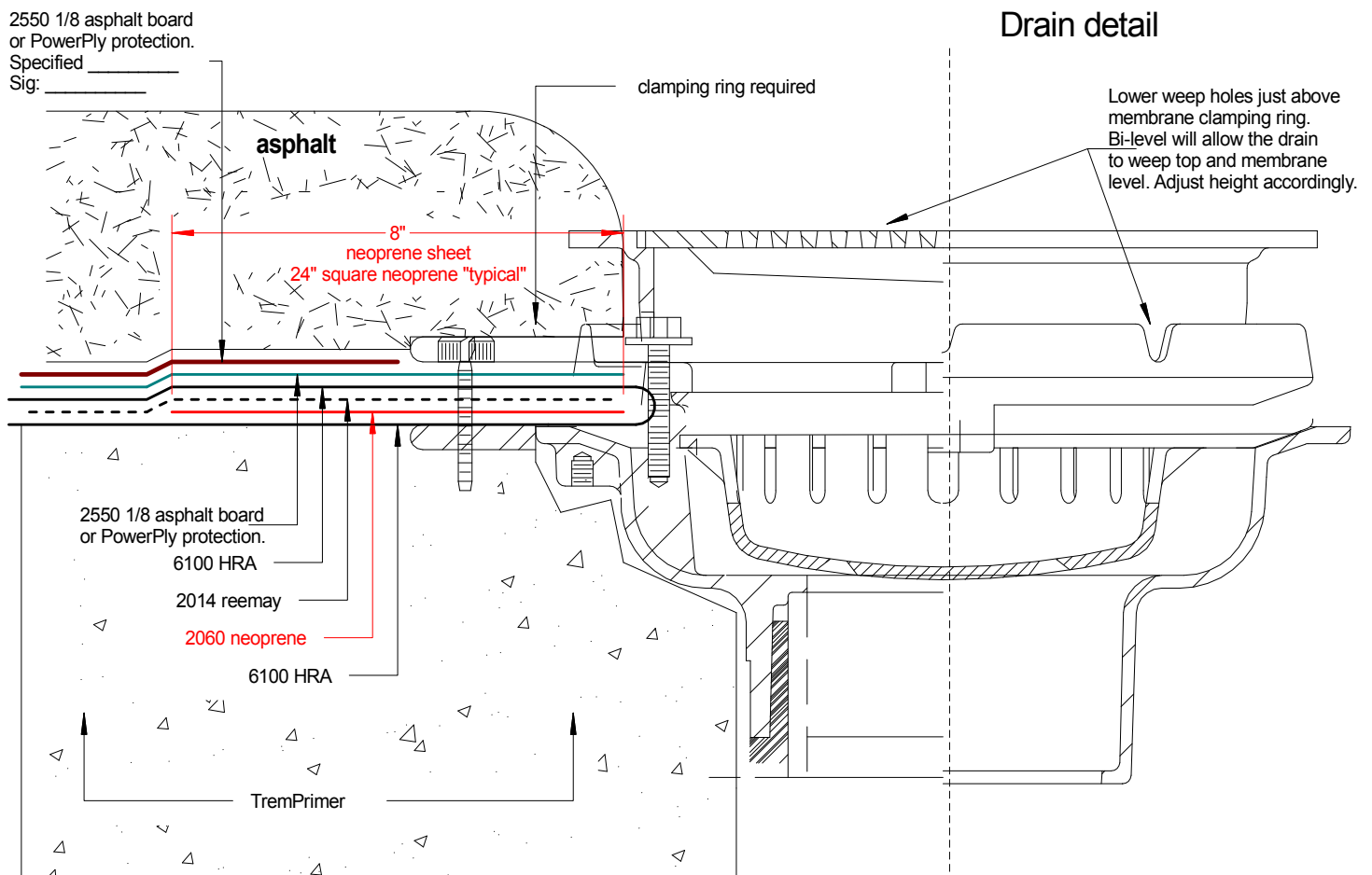


6100 HRA Membrane - Asphalt Pavement Slope to Drain Detail.

Shown: 6100 HRA installation to drain c/w

2060 neoprene / 2014 reemay. Detail shows asphalt sloped to drain

Detail>> D-1330-12A



This detail is used for round or square drains.

Tremco Canada
6178 Netherhart Rd.
Mississauga, On.
L5T 1B7
Ph: 905-564-6100
Fax: 905-564-6110

Tremco Inc.
www.tremcosealants.com

Tremco Inc.
3735 Green Rd,
Cleveland, OH. USA
44122
Ph: 216-292-5000
Fax: 216-292-5036

Date: Dec-7-2009		Drawing No. D-1330-12A
Drawn by: G.M.	Approved: <>	Scale:
Project:		

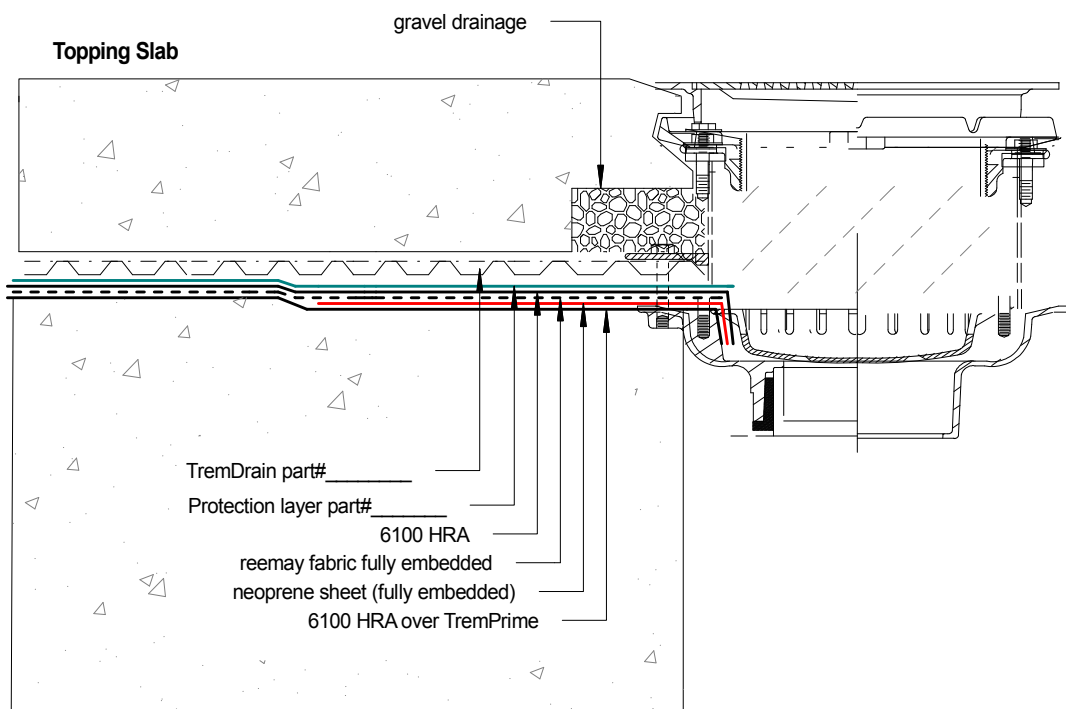


6100 HRA Drain Detail

Shown: Topping slab over 6100 HRA system c/w TremDrain abutted to Bi-level drain.

detail>> D-1509-55A

Note: Where possible, clamp all membrane components under clamping ring. Loose lay the drainage layer if drainage screen is provided.



Tremco Canada
6178 Netherhart Rd.
Mississauga, On.
L5T 1B7
Ph: 905-564-6100
Fax: 905-564-6110

Tremco Inc.
www.tremcosealants.com

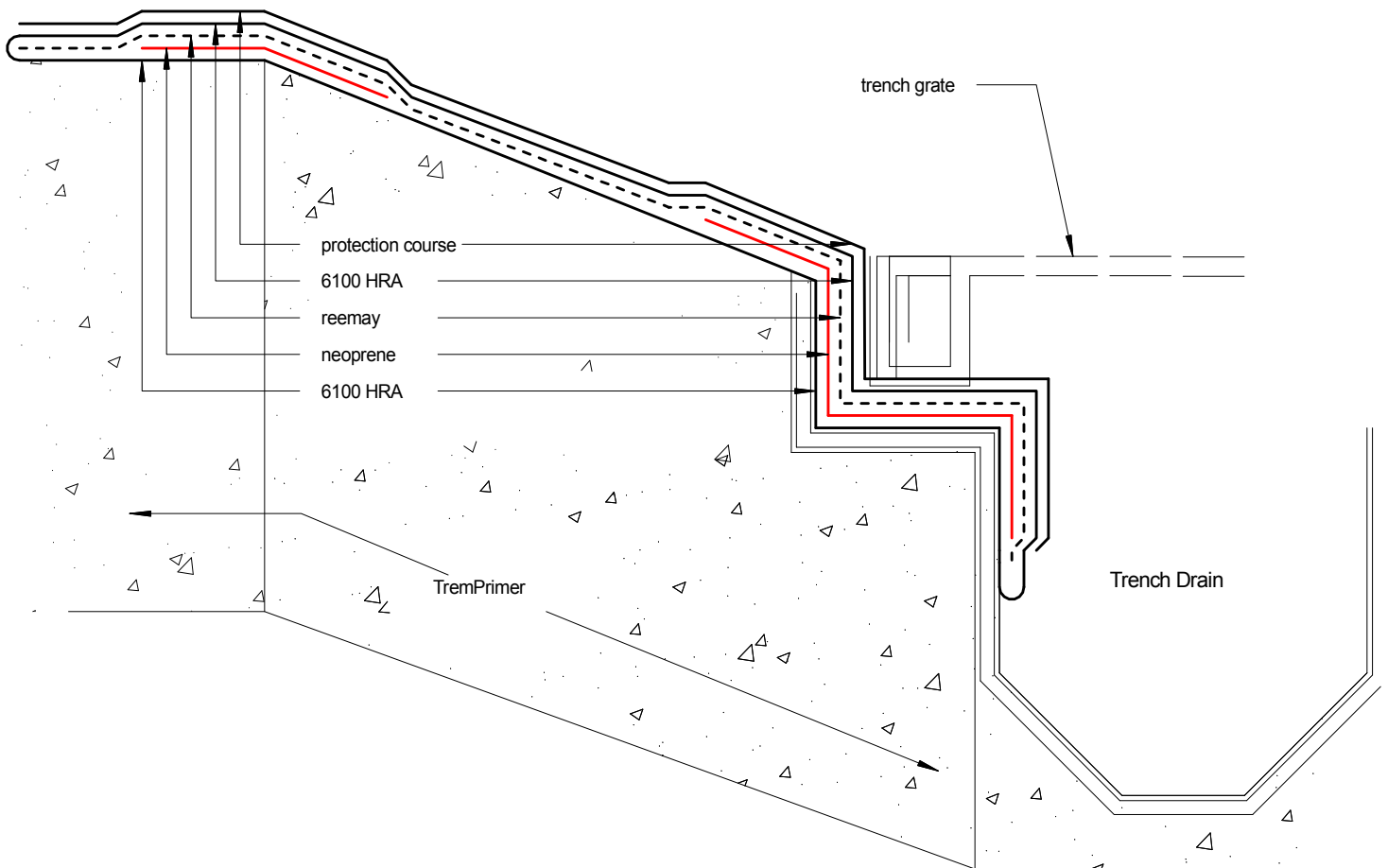
Tremco Inc.
3735 Green Rd,
Beachwood, OH. USA
44122
Ph: 216-292-5000
Fax: 216-292-5036

<u>Date:</u> Oct-15-2010		<u>Drawing No.</u> D-1509-55A
<u>Drawn by:</u> G.M.	<u>Approved:</u> <>	<u>Scale:</u>
<u>Project:</u>		



6100 HRA to ramp and trench drain

detail>> D-1255-6A



Tremco Canada
6178 Netherhart Rd.
Mississauga, On.
L5T 1B7
Ph: 905-564-6100
Fax: 905-564-6110

Tremco Inc.
www.tremcosealants.com

Tremco Inc.
3735 Green Rd,
Cleveland, OH. USA
44122
Ph: 216-292-5000
Fax: 216-292-5036

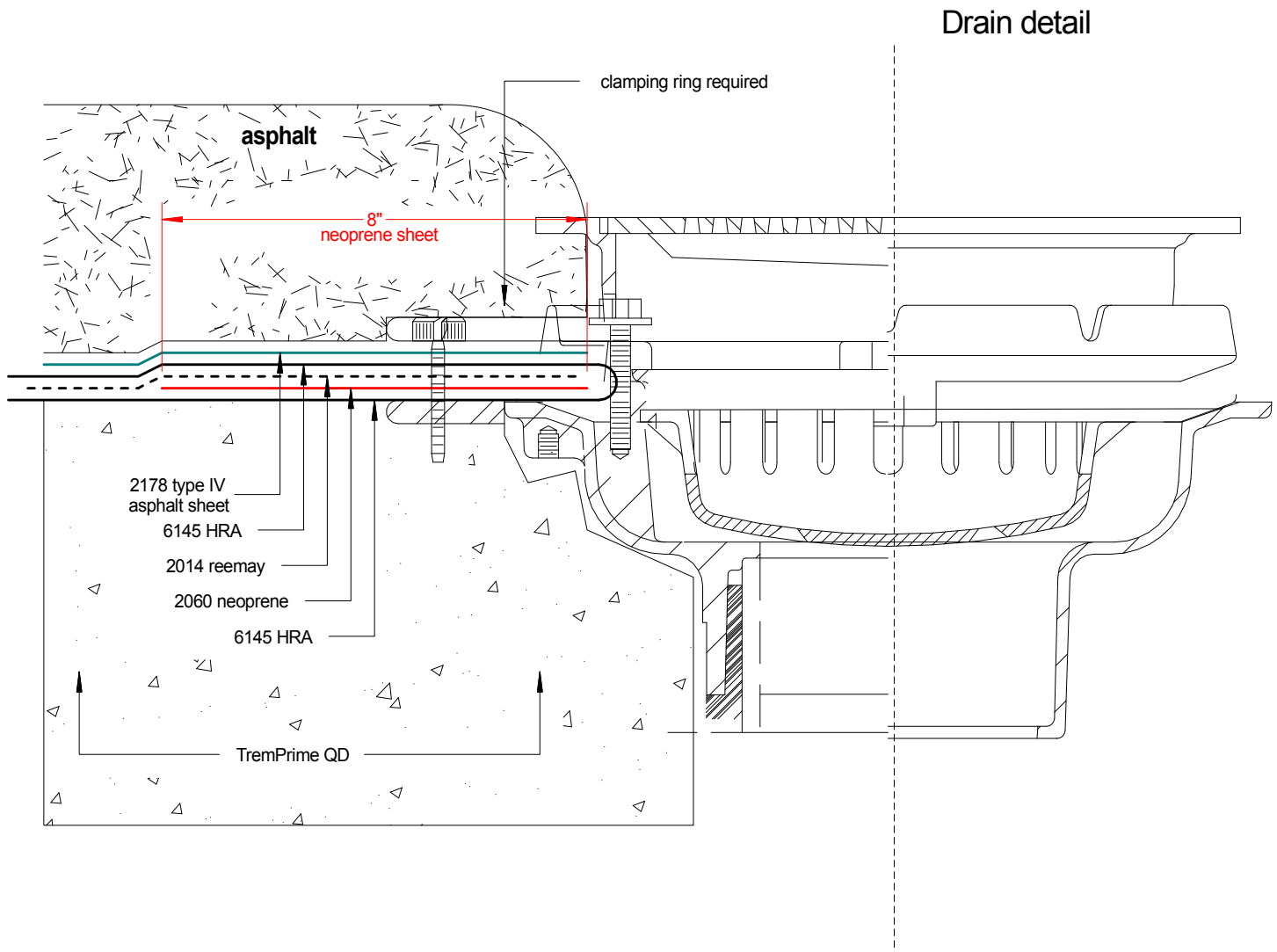
<u>Date:</u> Dec-23-2008		<u>Drawing No.</u> D-1255-1A
<u>Drawn by:</u> G.M.	<u>Approved:</u> <>	<u>Scale:</u>
<u>Project:</u>		



6145 Permaphalt HRA Membrane System

Shown: 6145 HRA installation to drain c/w
2060 neoprene 2014 reemay

Detail>> D-1064-6A



Tremco Canada
6178 Netherhart Rd.
Mississauga, On.
L5T 1B7
Ph: 905-564-6100
Fax: 905-564-6110

Tremco Inc.
www.tremcosealants.com

Tremco Inc.
3735 Green Rd,
Cleveland, OH. USA
44122
Ph: 216-292-5000
Fax: 216-292-5036

<u>Date:</u> Jul-17-2008		<u>Drawing No.</u> D-1064-6A
<u>Drawn by:</u> G.M.	<u>Approved:</u> <>	<u>Scale:</u>
<u>Project:</u>		



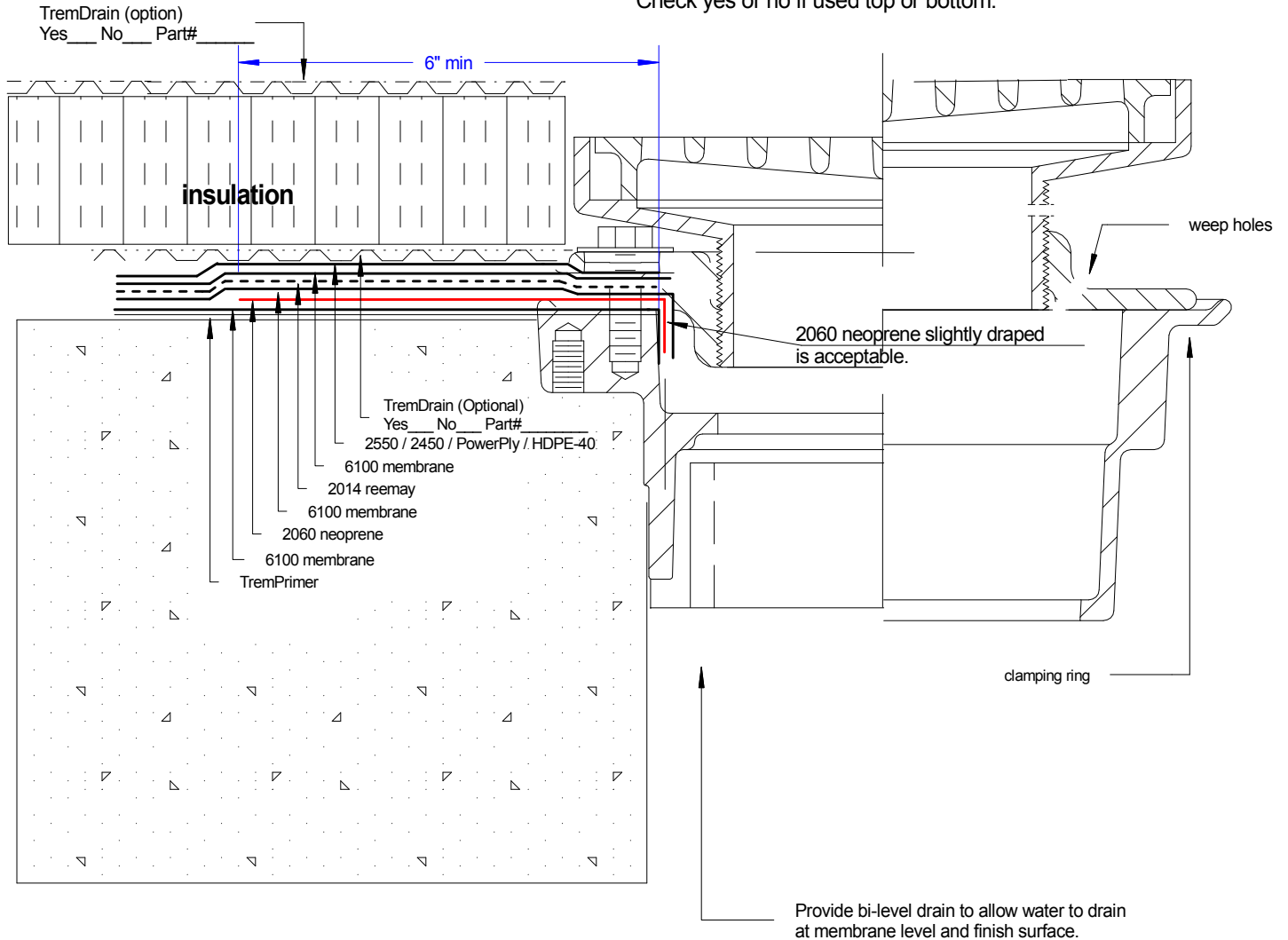
Drain Detail

Bi-level Drain shown.

(membrane clamping ring required with drain) **Note:**

detail>> D-1556-447A

If the clamping ring will accommodate the sheet protection where specified, clamp and compress the entire bonded system. Drainage board should be cut to circumference of drain and loose laid only if there is a metal drain filter weep. You have the option of Drain board top or bottom of the insulation. Check yes or no if used top or bottom.



Tremco Canada
6178 Netherhart Rd.
Mississauga, On.
L5T 1B7
Ph: 905-564-6100
Fax: 905-564-6110

Tremco Inc.
www.tremcosealants.com

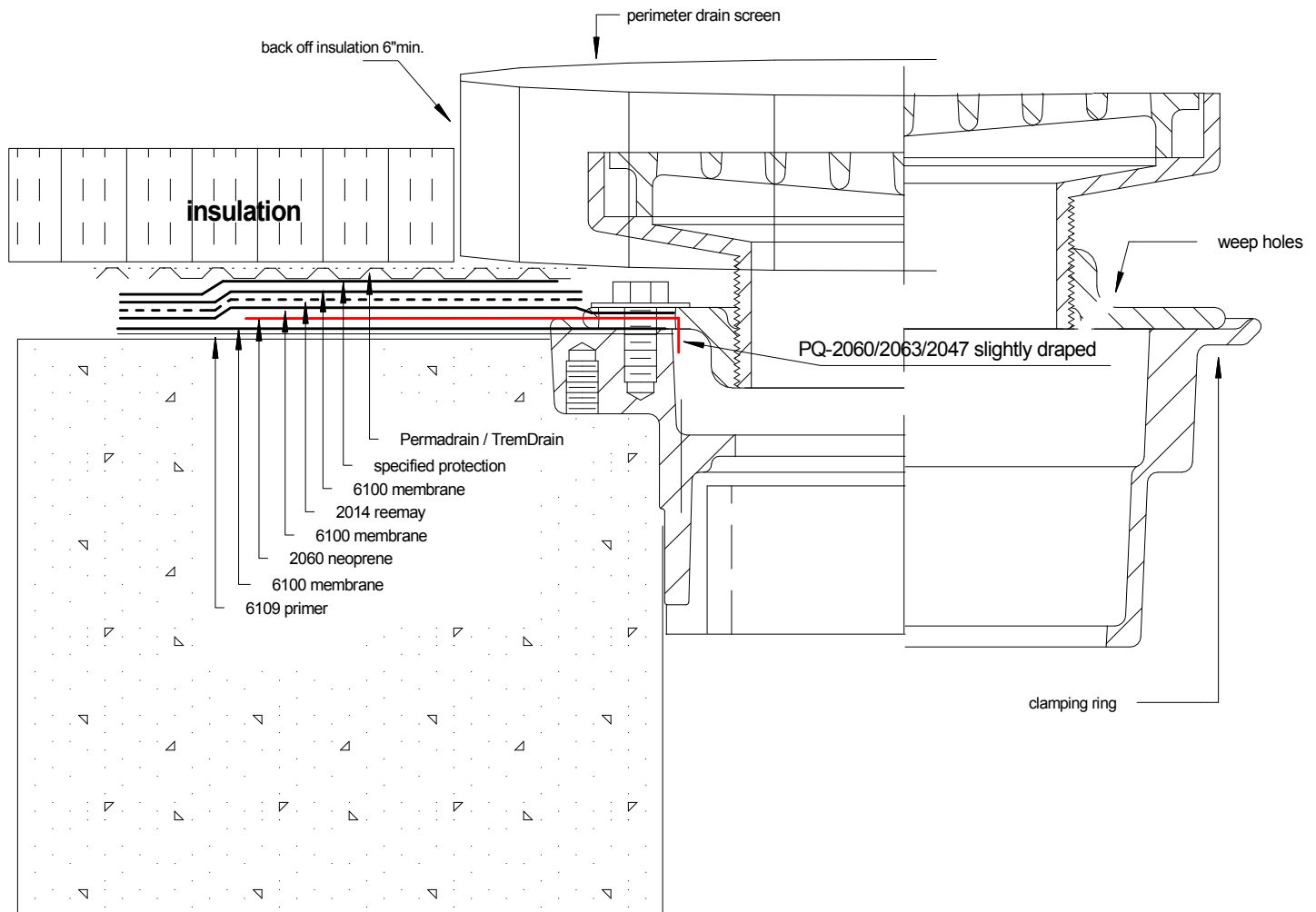
Tremco Inc.
3735 Green Rd,
Cleveland, OH. USA
44122
Ph: 216-292-5000
Fax: 216-292-5036

Date: Apr-18-2012		Drawing No. D-1556-447A
Drawn by: G.M.	Approved: <>	Scale:
Project:		Typical



Drain Detail

Bi-level or screen riser. Dome optional.
(membrane clamping ring required with drain)



Tremco Canada
6178 Netherhart Rd.
Mississauga, On.
L5T 1B7
Ph: 905-564-6100
Fax: 905-564-6110

Tremco Inc.
www.tremcosealants.com

Tremco Inc.
3735 Green Rd,
Cleveland, OH. USA
44122
Ph: 216-292-5000
Fax: 216-292-5036

<u>Date:</u> Mar-9-2007		<u>Drawing No.</u> D-44-2
<u>Drawn by:</u> G.M.	<u>Approved:</u> <>	<u>Scale:</u>
<u>Project:</u> Typical		

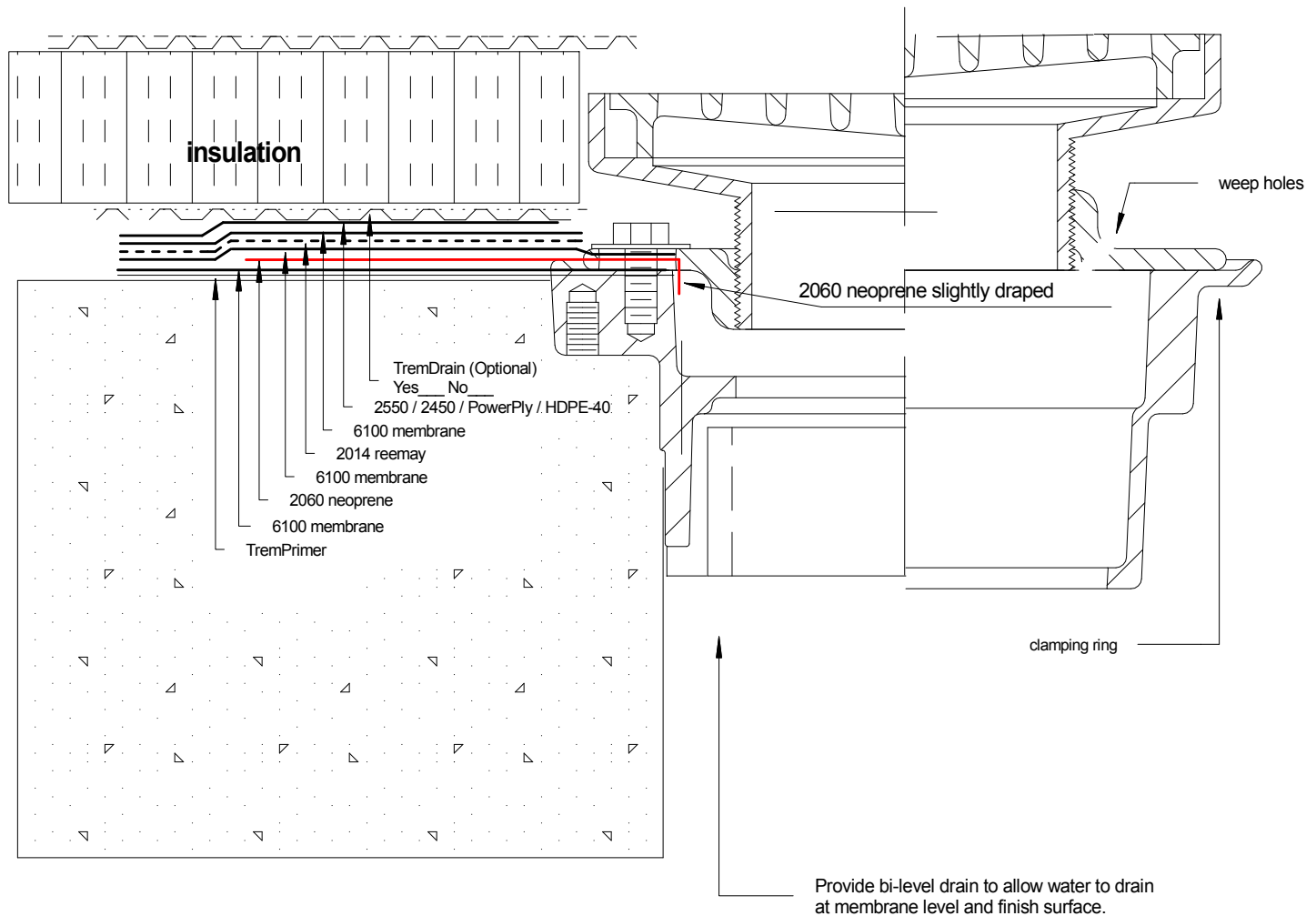


Drain Detail
Bi-level Drain shown.
(membrane clamping ring required with drain)

detail>> D-1556-447A

Note:

If the clamping ring will accommodate the sheet protection where specified, clamp and compress the entire bonded system.



Tremco Canada
6178 Netherhart Rd.
Mississauga, On.
L5T 1B7
Ph: 905-564-6100
Fax: 905-564-6110

Tremco Inc.
www.tremcosealants.com

Tremco Inc.
3735 Green Rd,
Cleveland, OH. USA
44122
Ph: 216-292-5000
Fax: 216-292-5036

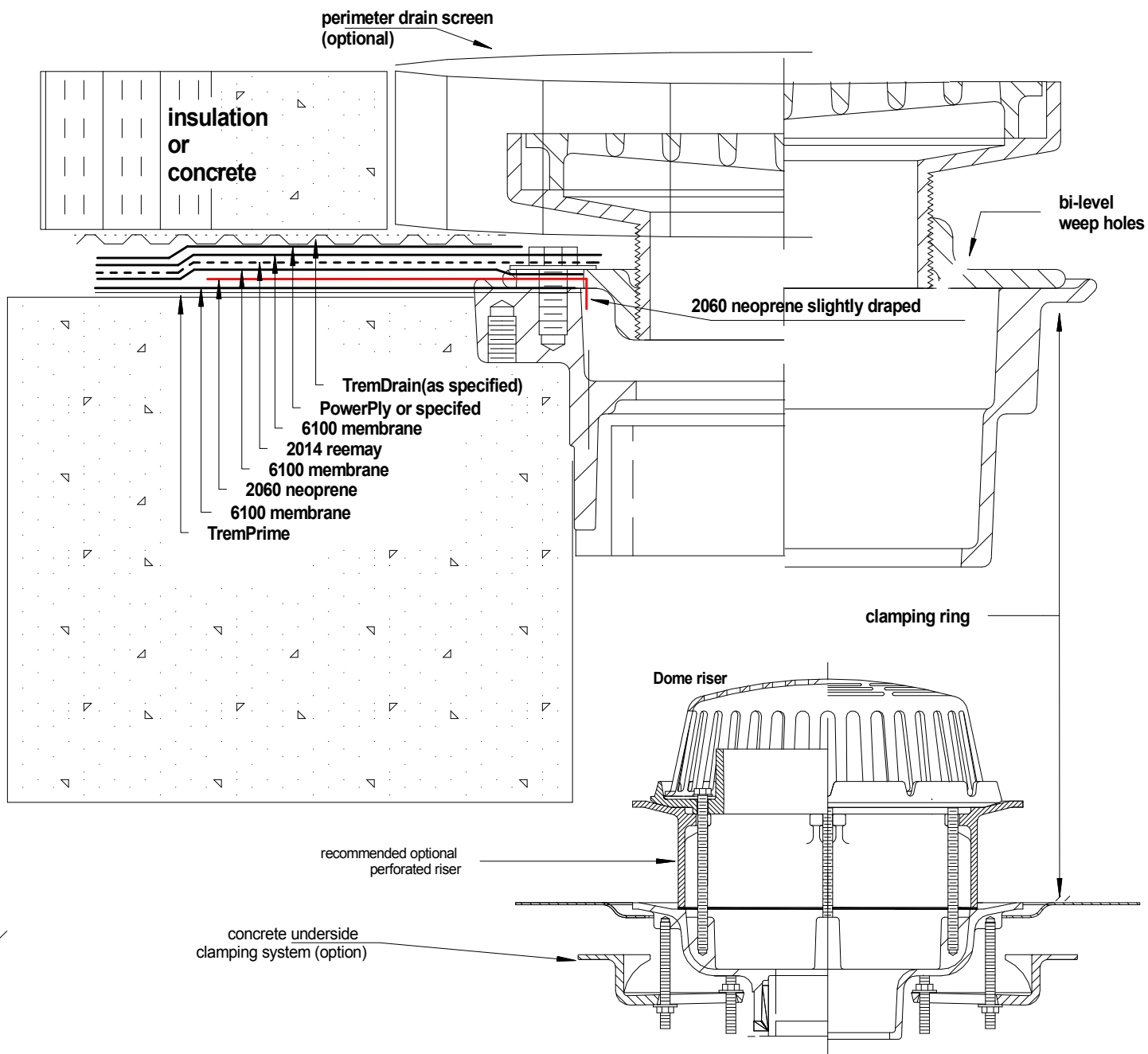
Date: Apr-18-2012		Drawing No. D-1556-447A
Drawn by: G.M.	Approved: <>	Scale:
Project:		Typical



Drain Detail

Bi-level or screen riser with dome.

(membrane clamping ring required with drain)



Tremco Canada
6178 Netherhart Rd.
Mississauga, On.
L5T 1B7
Ph: 905-564-6100
Fax: 905-564-6110

Tremco Inc.
www.tremcosealants.com

Tremco Inc.
3735 Green Rd,
Cleveland, OH. USA
44122
Ph: 216-292-5000
Fax: 216-292-5036

Date:
Jan-7-2008

Drawing No.
D-649-1A

Drawn by:
G.M.

Approved:
<>

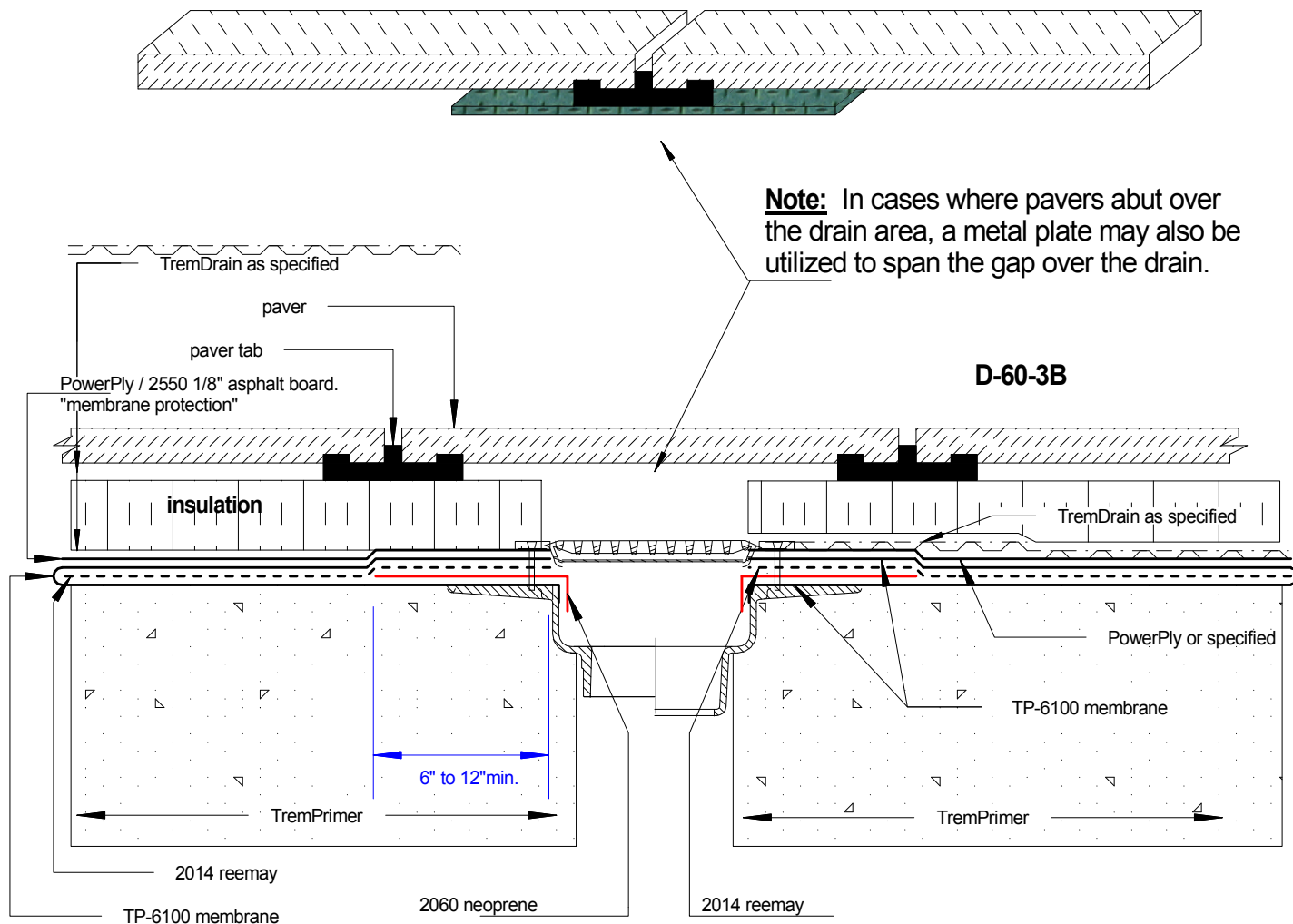
Scale:

Project:
Typical



Drain detail including pavers over insulation (Typical)

D-60-3B



Tremco Canada
6178 Netherhart Rd.
Mississauga, On.
L5T 1B7
Ph: 905-564-6100
Fax: 905-564-6110

Tremco Inc.
www.tremcosealants.com

Tremco Inc.
3735 Green Rd,
Cleveland, OH. USA
44122
Ph: 216-292-5000
Fax: 216-292-5036

Date: Feb-28-2008

Drawing No.
D-60-3B

Drawn by: G.M.
Approved: <>

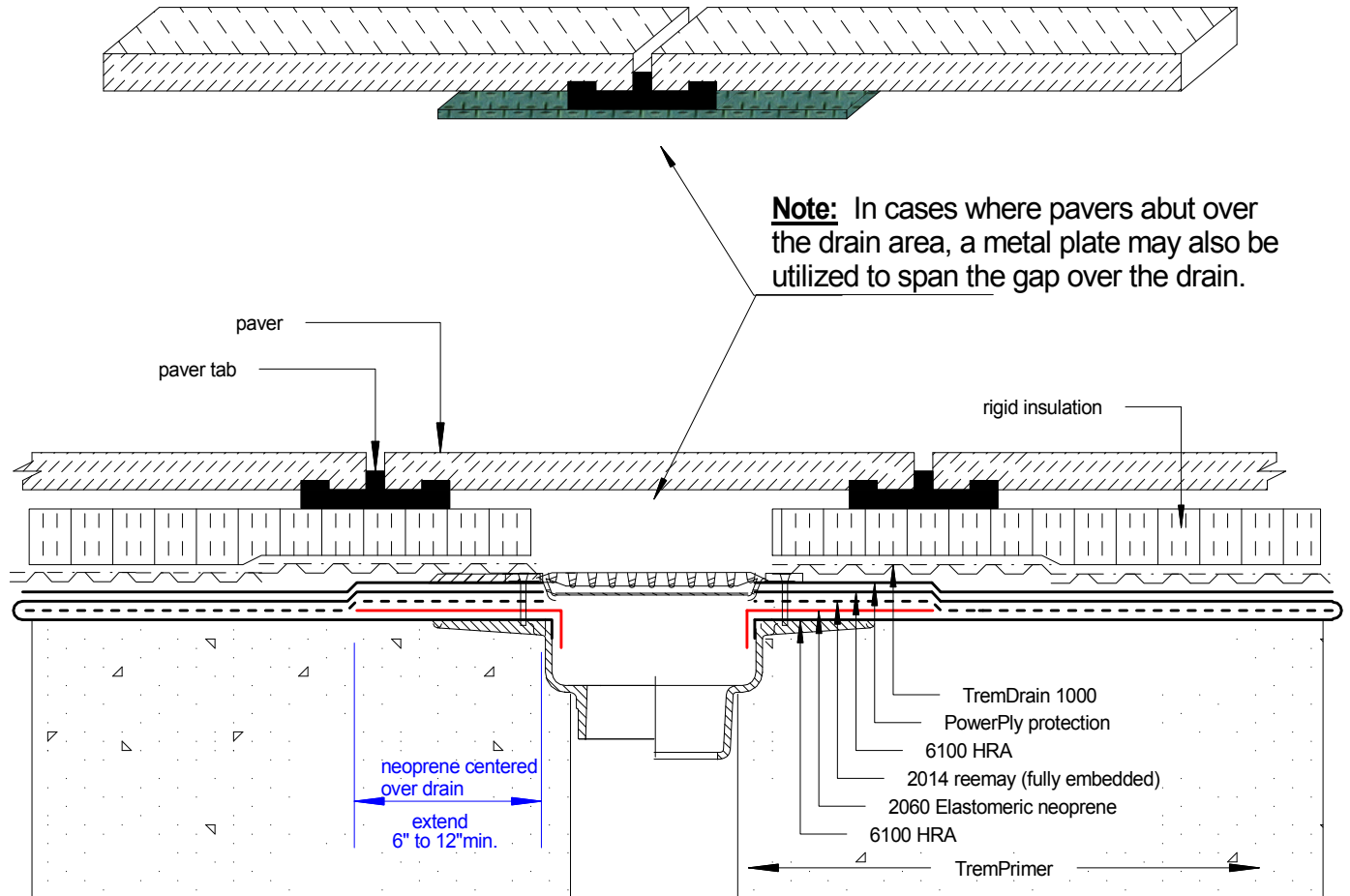
Scale:

Project:



Drain detail including pavers over insulation (Typical)

D-60-3B-R5 Apr-8-2009



Tremco Canada
6178 Netherhart Rd.
Mississauga, On.
L5T 1B7
Ph: 905-564-6100
Fax: 905-564-6110

Tremco Inc.
www.tremcosealants.com

Tremco Inc.
3735 Green Rd,
Cleveland, OH. USA
44122
Ph: 216-292-5000
Fax: 216-292-5036

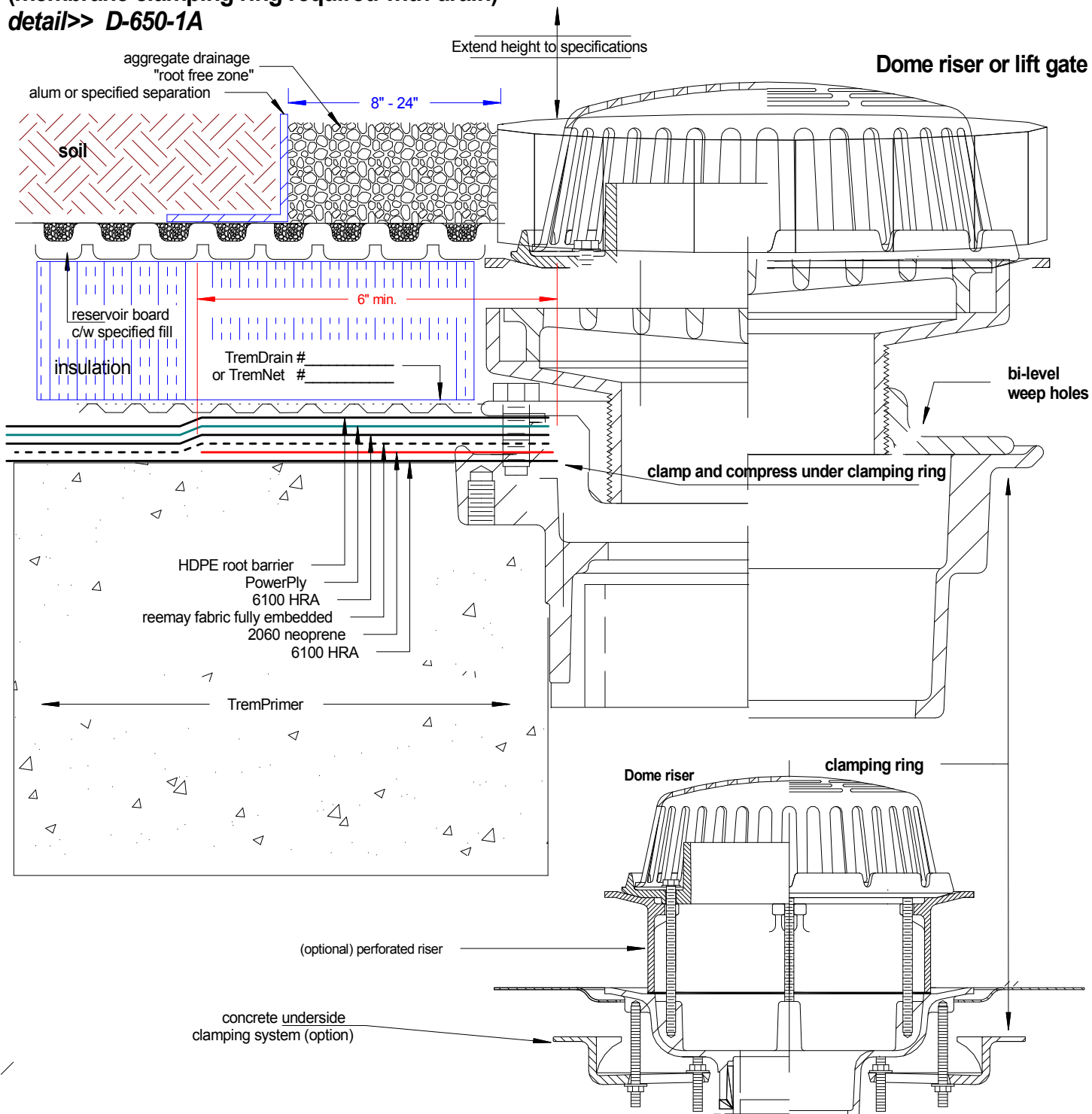
Date: Apr-8-2009		Drawing No. D-60-3B-R5
Drawn by: G.M.	Approved: <>	Scale:
Project:		



GreenScape Drain Detail

Bi-level or screen riser with dome or lift gate.
(membrane clamping ring required with drain)

detail>> D-650-1A



Tremco Canada
6178 Netherhart Rd.
Mississauga, On.
L5T 1B7
Ph: 905-564-6100
Fax: 905-564-6110

Tremco Inc.
www.tremcosealants.com

Tremco Inc.
3735 Green Rd,
Cleveland, OH. USA
44122
Ph: 216-292-5000
Fax: 216-292-5036

Date:
Jul-2-2009

Drawing No.
D-650-1A

Drawn by:
G.M.

Approved:

<>

Scale:

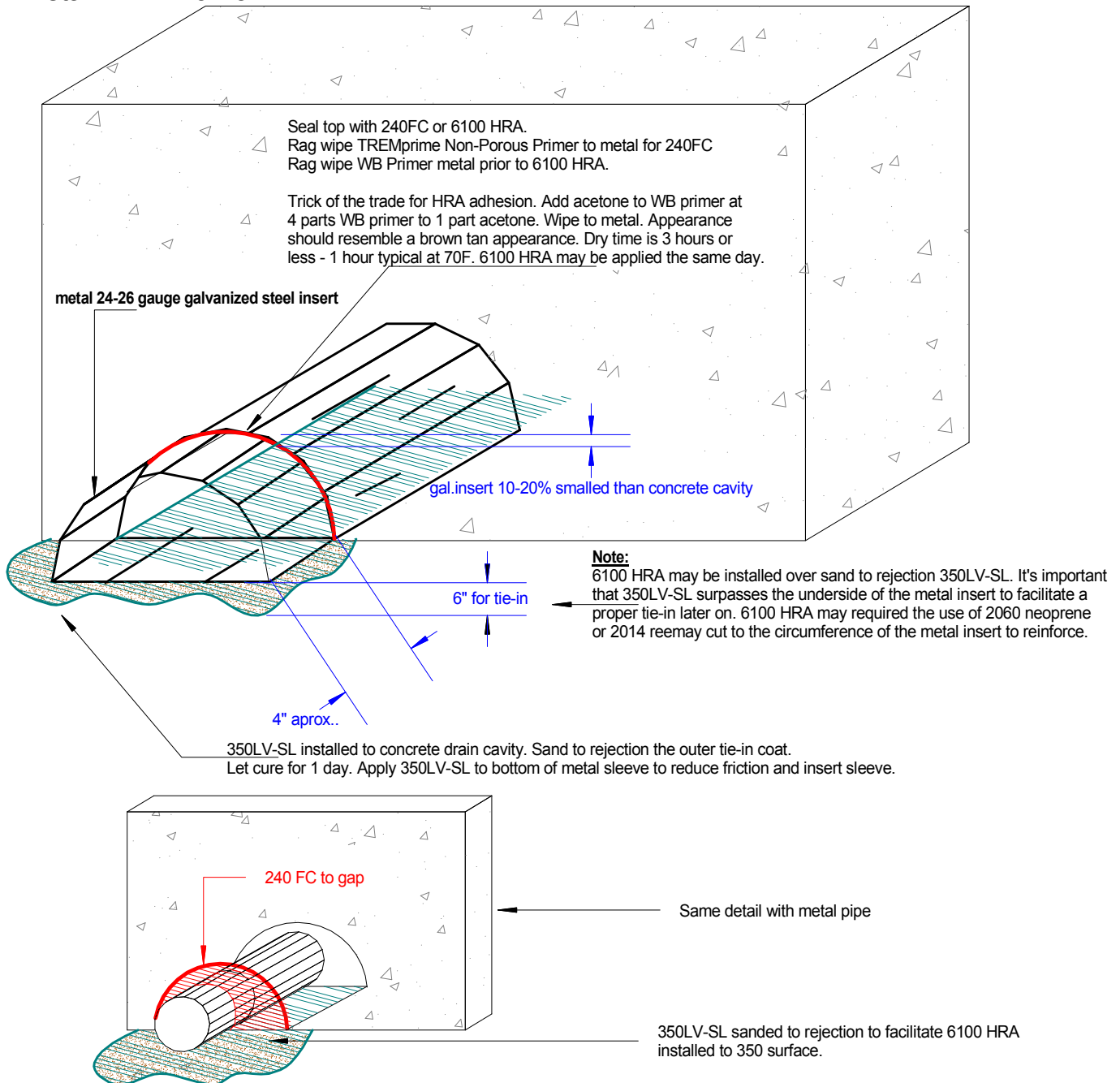
Project:



6100 / 350LV-SL Membrane Application to Metal Drain Wall Cavity Insert

Shown: 350LV-SL applied to concrete throughout drain wall cavity. 6100 HRA applied to sanded 350LV-SL.

Detail>> D-1191-3A



Tremco Canada
6178 Netherhart Rd.
Mississauga, On.
L5T 1B7
Ph: 905-564-6100
Fax: 905-564-6110

Tremco Inc.
www.tremcosealants.com

Tremco Inc.
3735 Green Rd,
Beachwood, OH. USA
44122
Ph: 216-292-5000
Fax: 216-292-5036

Date: Jun-16-2009		Drawing No. D-1191-3A
Drawn by: G.M.	Approved: <>	Scale:
Project:		

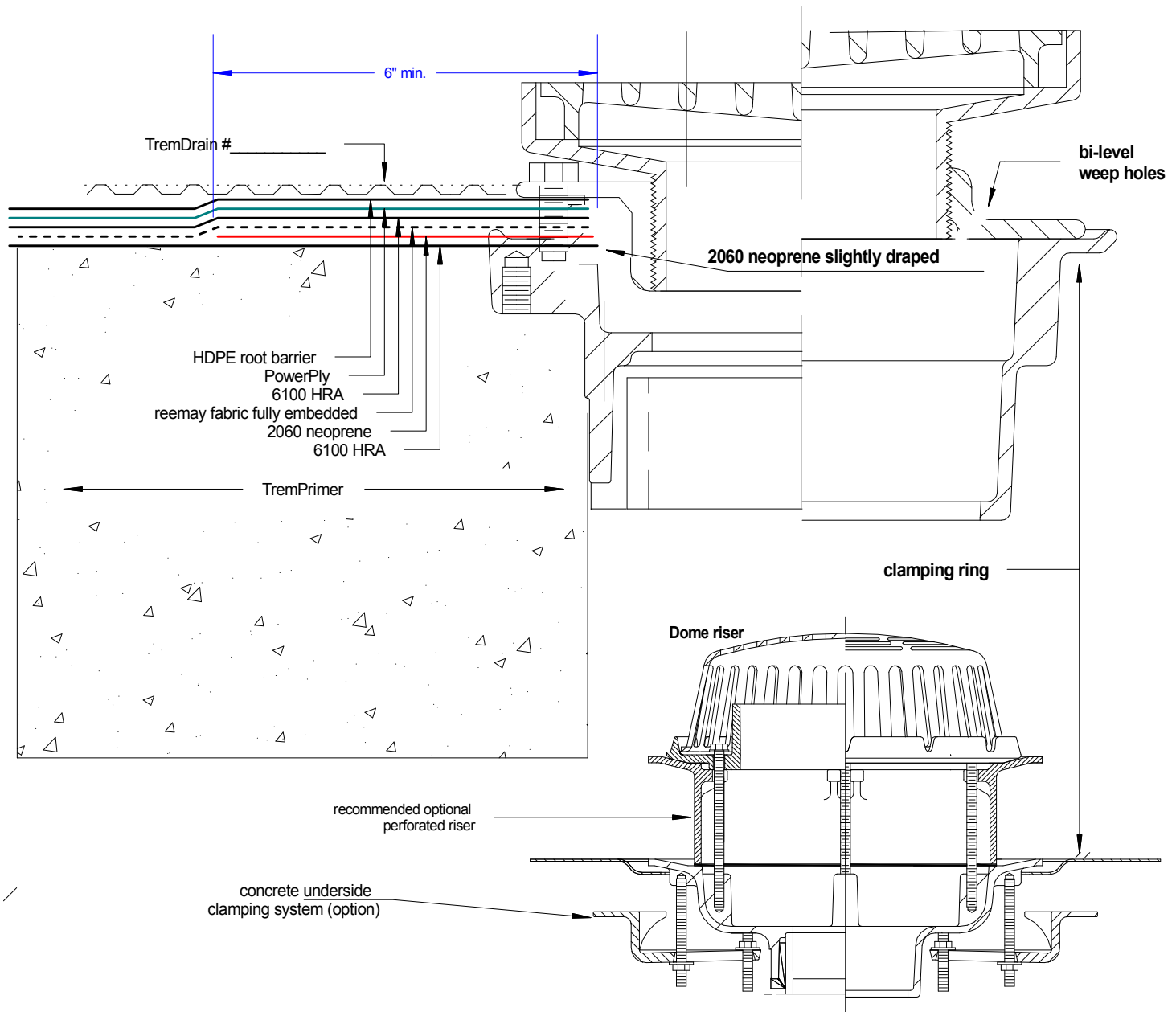


Drain Detail

Bi-level or screen riser with dome.

(membrane clamping ring required with drain)

detail>> D-649-1A-R1



Tremco Canada
6178 Netherhart Rd.
Mississauga, On.
L5T 1B7
Ph: 905-564-6100
Fax: 905-564-6110

Tremco Inc.
www.tremcosealants.com

Tremco Inc.
3735 Green Rd,
Cleveland, OH. USA
44122
Ph: 216-292-5000
Fax: 216-292-5036

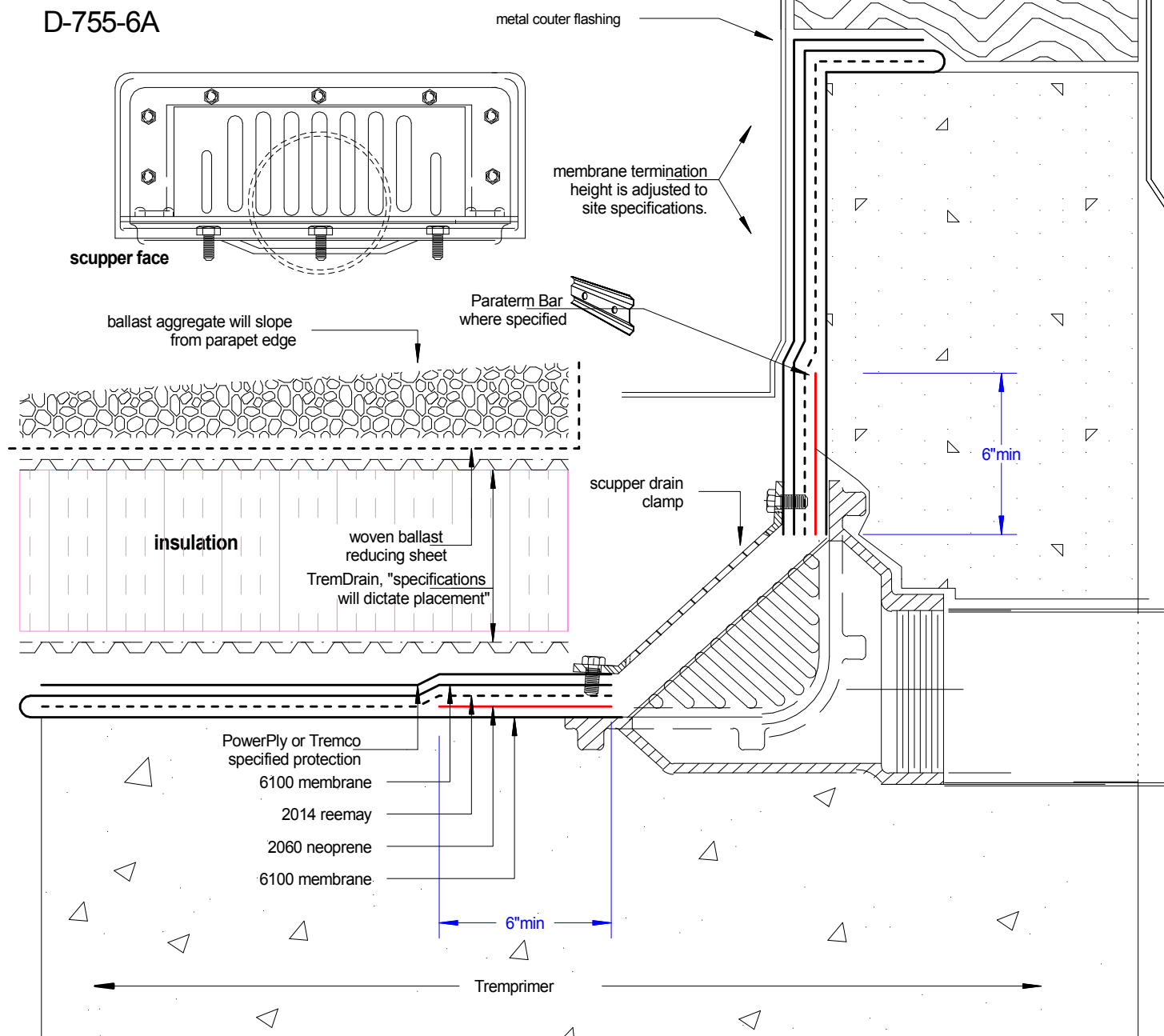
Date: Jun-26-2009		Drawing No. D-649-1A-R1
Drawn by: G.M.	Approved: <>	Scale:
Project:		Woodall Rogers



Typical Scupper Detail c/w Clamp.

>>clamping ring or plate must be included for proper scupper detailing.

D-755-6A



Tremco Canada
6178 Netherhart Rd.
Mississauga, On.
L5T 1B7
Ph: 905-564-6100
Fax: 905-564-6110

Tremco Inc.
www.tremcosealants.com

Tremco Inc.
3735 Green Rd,
Cleveland, OH. USA
44122
Ph: 216-292-5000
Fax: 216-292-5036

Date: Feb-3-2008

Drawing No.
D-755-6A

Drawn by:
G.M.

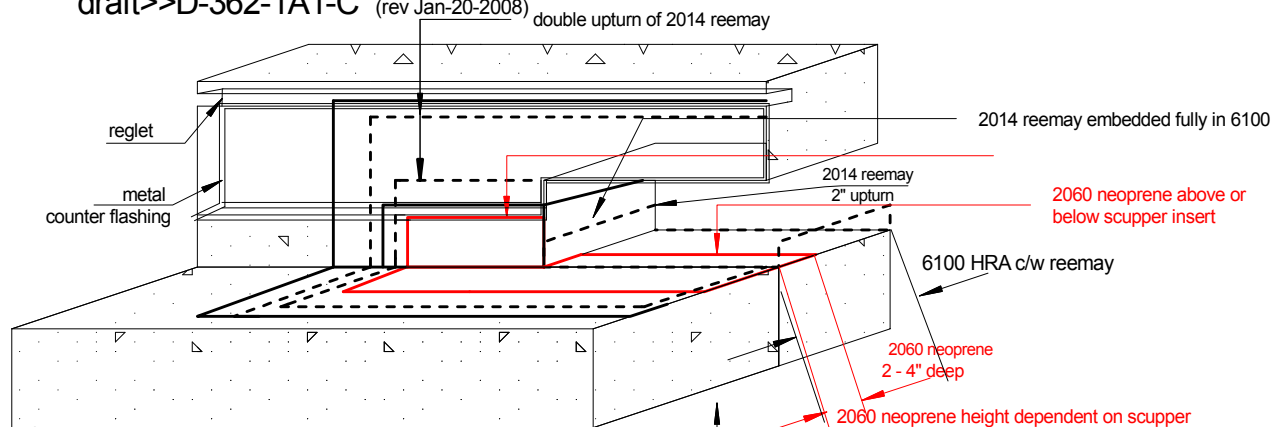
Approved:
<>

Scale:

Project: Typical



Scupper waterproofing detail
6100 / 150 HRA membrane system
draft>>D-362-1A1-C (rev Jan-20-2008)



Sequence:

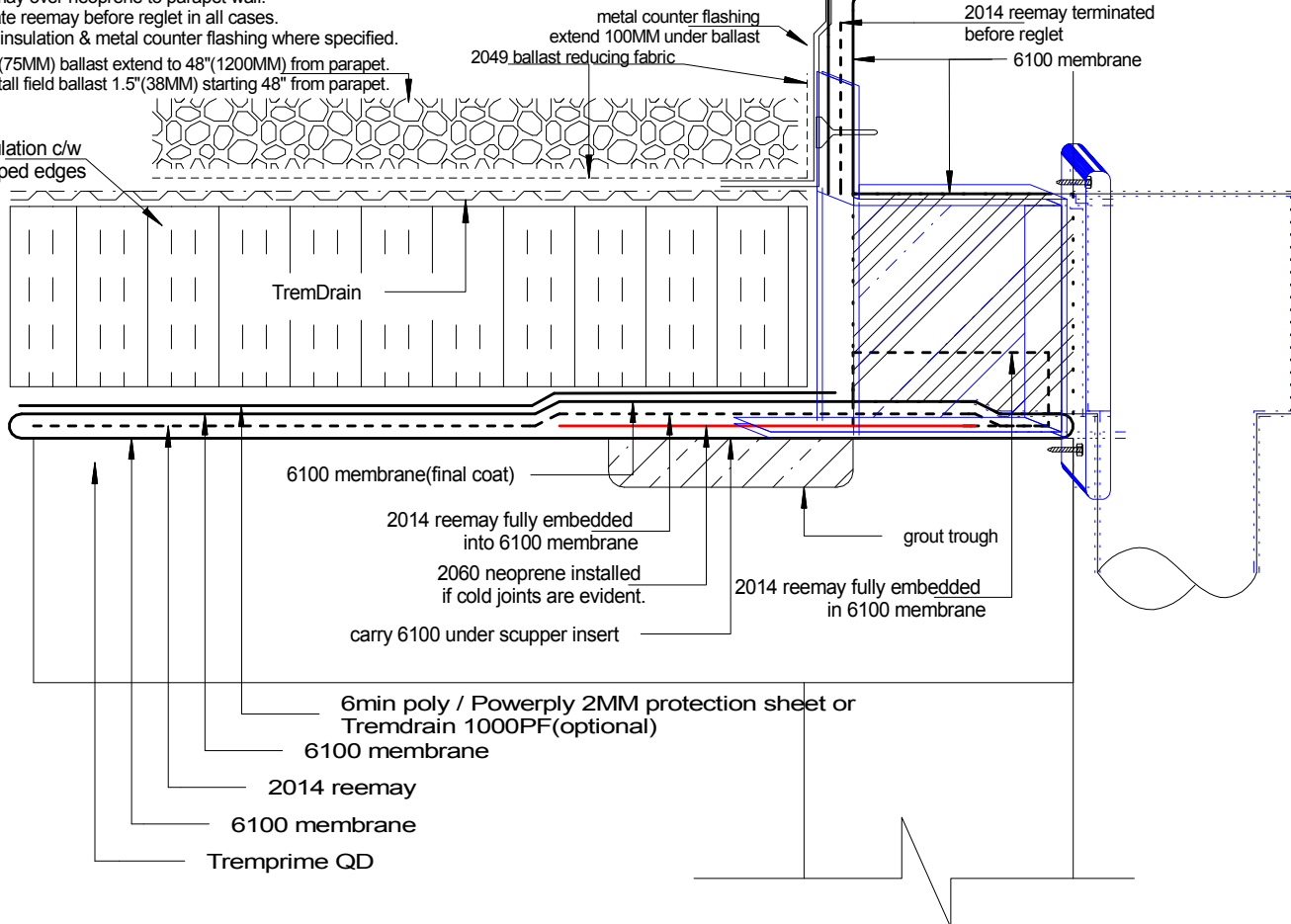
- >>install primer to all surfaces - concrete or metal
- >>install 6100 membrane 2mm/tk over scupper insert
- >>install neoprene embedded in 6100 over scupper insert
- >>install reemay over 6100 over neoprene terminating beyond all traces of 2060 neoprene edges.
- >>install neoprene to parapet wall
- >>install reemay over neoprene to parapet wall.

Note: terminate reemay before reglet in all cases.

- >>cover with insulation & metal counter flashing where specified.

3"(75MM) ballast extend to 48"(1200MM) from parapet.
Install field ballast 1.5"(38MM) starting 48" from parapet.

4"/tk insulation c/w
extruded lapped edges



Tremco Canada
6178 Netherhart Rd.
Mississauga, On.
L5T 1B7
Ph: 905-564-6100
Fax: 905-564-6110

Tremco Inc.
www.tremcosealants.com

Tremco Inc.
3735 Green Rd,
Cleveland, OH. USA
44122
Ph:216-292-5000
Fax: 216-292-5036

Date:
Jan-20-2008

Drawing No.
D-362-1A1-C

Drawn by: G.M.
Approved: <>

Scale:

Project:
typical