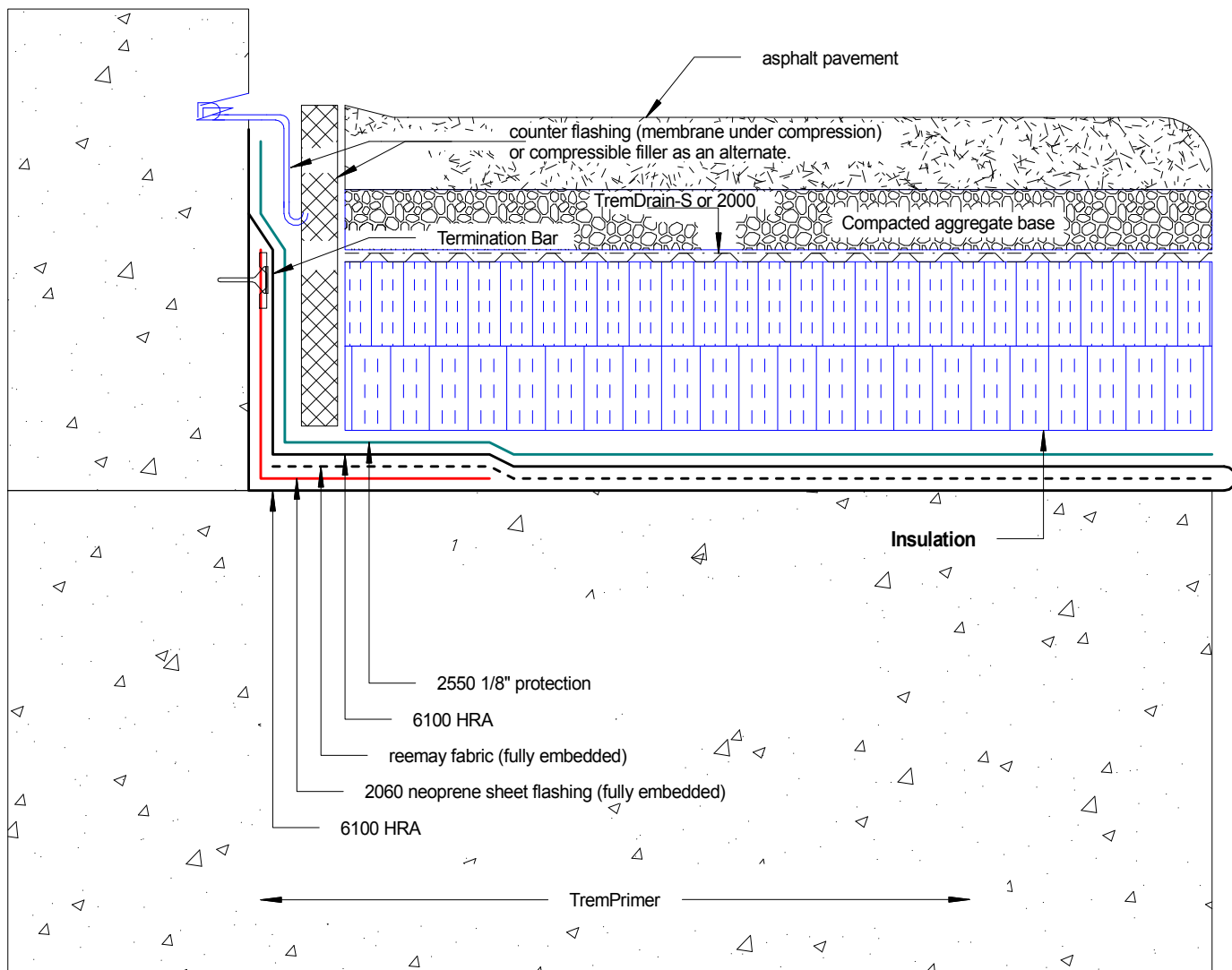




## 6100 HRA Upturn c/w Asphalt over Insulation

Detail>> D-1357-153A



Tremco Canada  
6178 Netherhart Rd.  
Mississauga, On.  
L5T 1B7  
Ph: 905-564-6100  
Fax: 905-564-6110

**Tremco Inc.**  
[www.tremcosealants.com](http://www.tremcosealants.com)

Tremco Inc.  
3735 Green Rd,  
Beachwood, OH. USA  
44122  
Ph: 216-292-5000  
Fax: 216-292-5036

Date: Jun-21-2010

Drawing No.  
D-1357-153A

Drawn by:  
G.M.

Approved:  
<>

Scale:

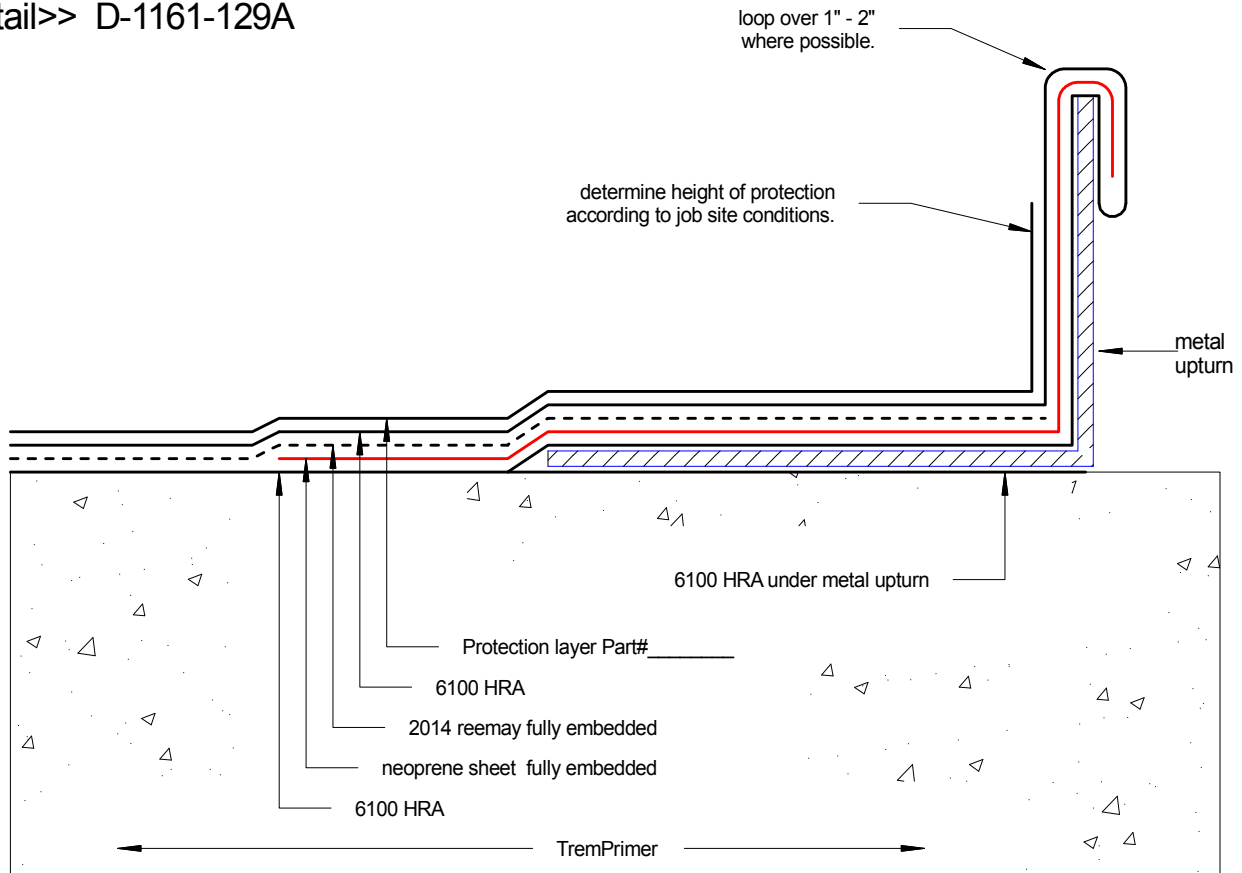
Project: typical





## 6100 HRA to metal upturn

detail>> D-1161-129A



Tremco Canada  
6178 Netherhart Rd.  
Mississauga, On.  
L5T 1B7  
Ph: 905-564-6100  
Fax: 905-564-6110

**Tremco Inc.**  
www.tremcosealants.com

Tremco Inc.  
3735 Green Rd,  
Beachwood, OH. USA  
44122  
Ph: 216-292-5000  
Fax: 216-292-5036

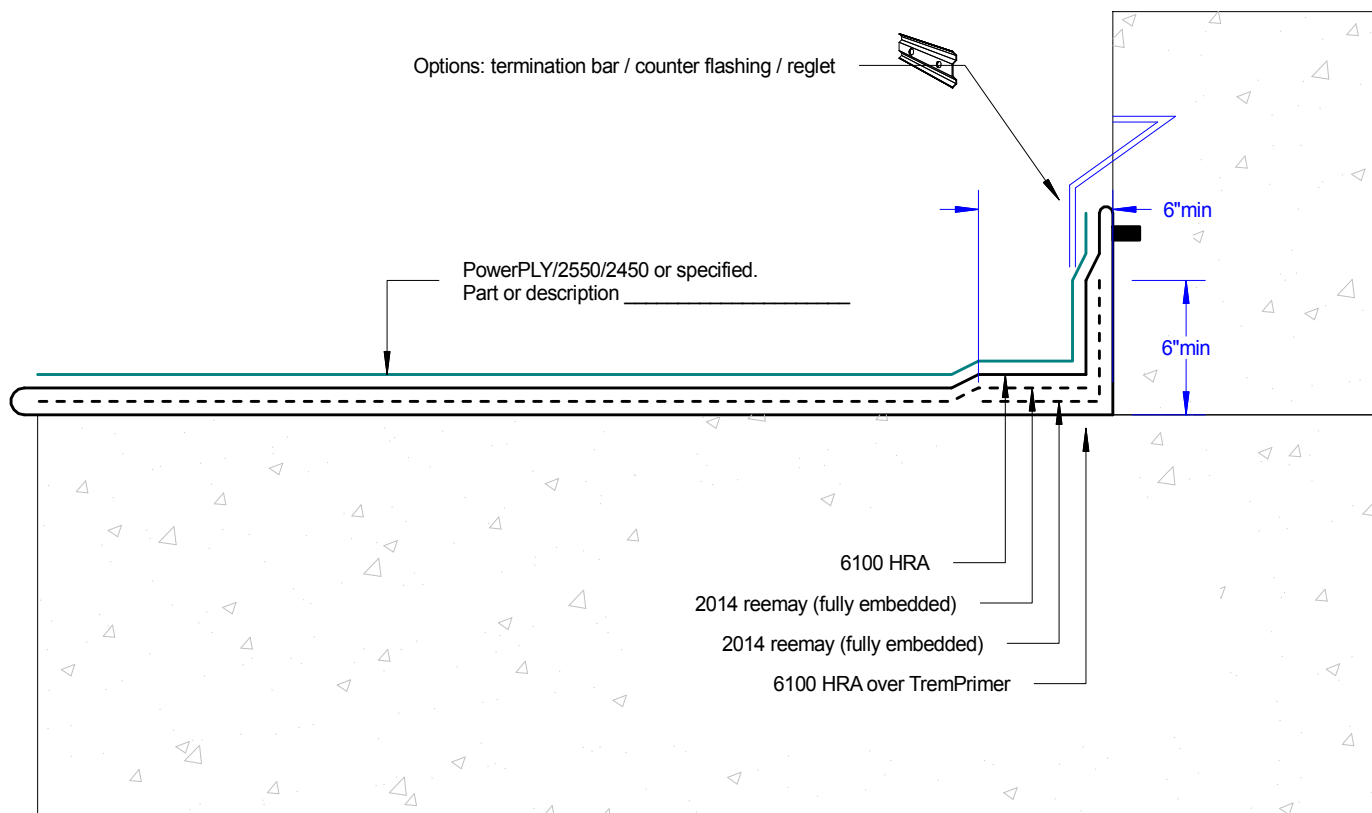
|                   |              |                         |
|-------------------|--------------|-------------------------|
| Date: Aug-12-2010 |              | Drawing No. D-1161-129A |
| Drawn by: G.M.    | Approved: <> | Scale:                  |
| Project:          |              |                         |





## 6100 Fabric Reinforced Upturn

detail>> D-1383-245A



Tremco Canada  
6178 Netherhart Rd.  
Mississauga, On.  
L5T 1B7  
Ph: 905-564-6100  
Fax: 905-564-6110

**Tremco Inc.**  
www.tremcosealants.com

Tremco Inc.  
3735 Green Rd,  
Beachwood, OH. USA  
44122  
Ph: 216-292-5000  
Fax: 216-292-5036

Date: Jun-30-2011

Drawing No.  
D-1383-245A

Drawn by: G.M.  
Approved: <>

Scale:

Project:



Project:

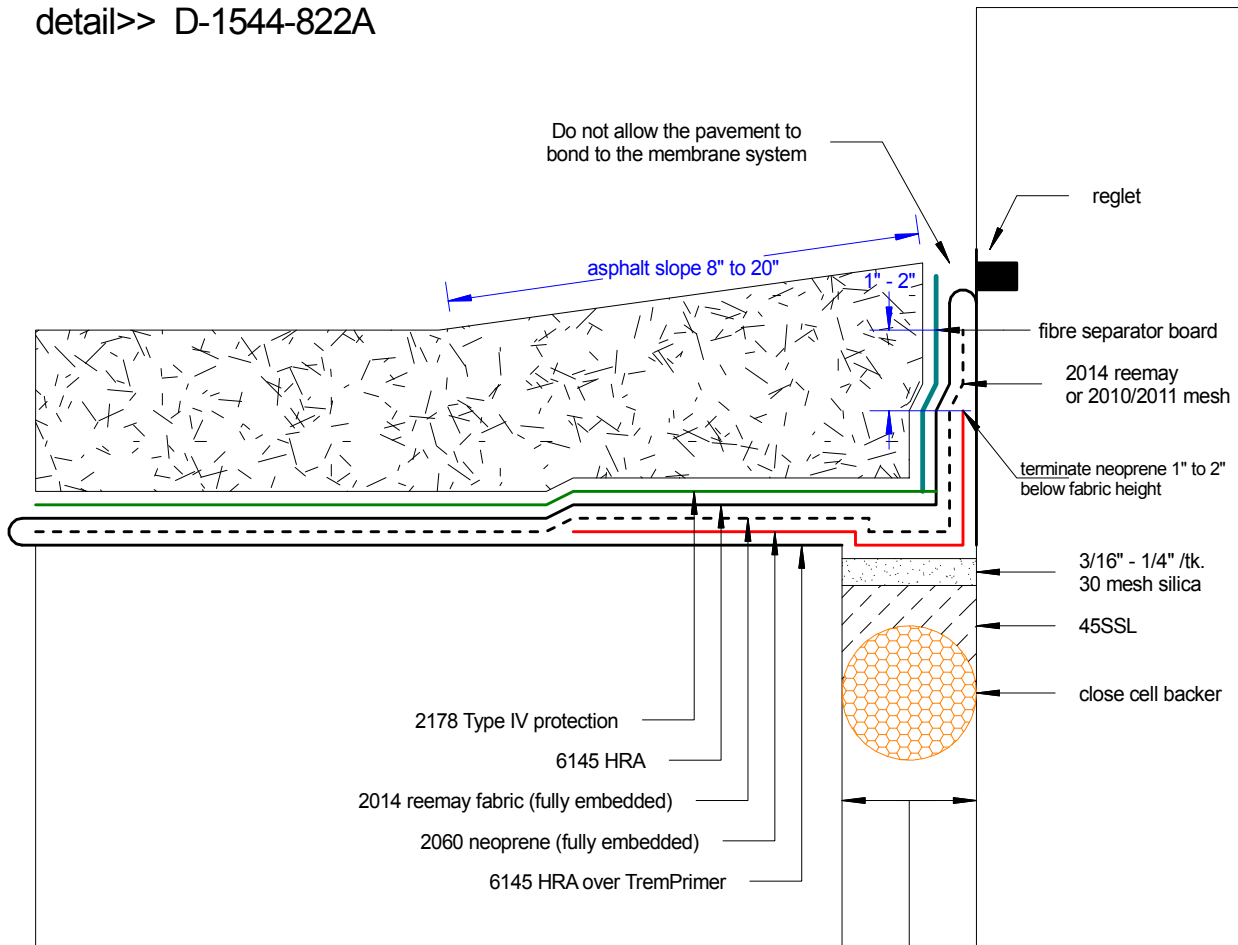




## 6145 Upturn to Parapet/Crash Wall Expansion

Shown: 6145 HRA over 45SSL expansion sealant.

detail>> D-1544-822A



**Note:** Sand over sealant allows free movement. This also allows the 6145 to be installed over the sealant next day without waiting for the sealant to fully cure. Sand also isolates heat. Do not depress the membrane system any lower than the expansion movement. Example; If the movement is 1/8", the backer/sealant and sand should allow a 1/8" depression top of joint. Neoprene is allowed to expand 15mm when installed flat over a 1" gap. 1/2" gaps do not normally need any kind of depression other than to accommodate the sand over sealant.

> 45SSL chosen sealant because of its ability to bond to damp surfaces

Asphalt pavement: Slope from wall will prevent snow melt from accumulating. The thicker asphalt pavement will also bridge the expansion gap without cracking.

Make absolutely sure the internal bonding surface is clean. Use wire wheel and solvent in some cases.

Tremco Canada  
6178 Netherhart Rd.  
Mississauga, On.  
L5T 1B7  
Ph: 905-564-6100  
Fax: 905-564-6110

**Tremco Inc.**  
www.tremcosealants.com

Tremco Inc.  
3735 Green Rd,  
Beachwood, OH. USA  
44122  
Ph: 216-292-5000  
Fax: 216-292-5036

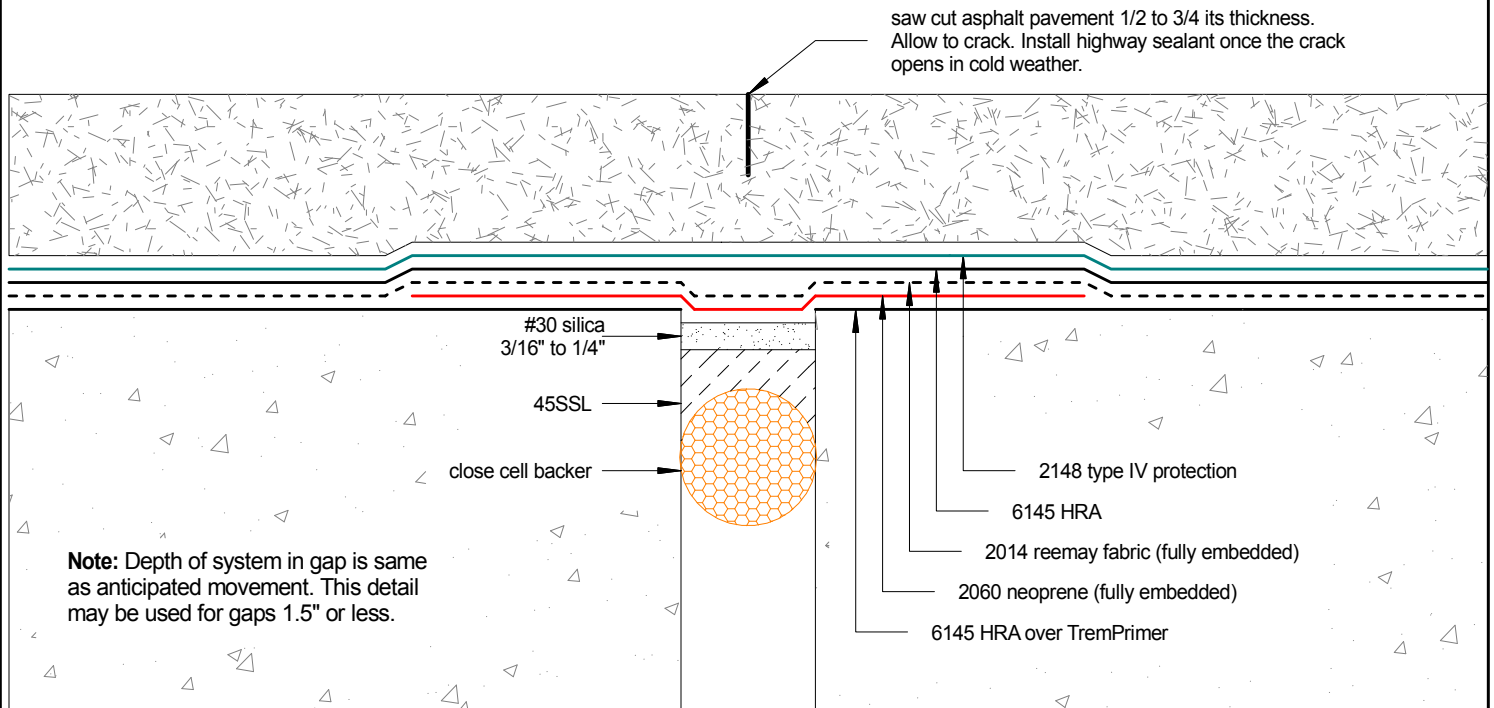
|                         |                 |                             |
|-------------------------|-----------------|-----------------------------|
| Date:<br>date-date-date |                 | Drawing No.<br>xxx-cccc-000 |
| Drawn by:<br>G.M.       | Approved:<br><> | Scale:                      |
| Project:                |                 |                             |





## 6145 - 45SSL reinforced horizontal expansion

detail>> D-1561-762A



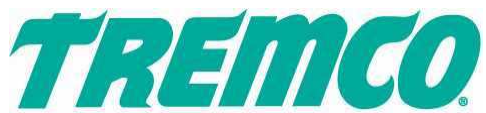
Tremco Canada  
6178 Netherhart Rd.  
Mississauga, On.  
L5T 1B7  
Ph: 905-564-6100  
Fax: 905-564-6110

**Tremco Inc.**  
[www.tremcosealants.com](http://www.tremcosealants.com)

Tremco Inc.  
3735 Green Rd,  
Beachwood, OH. USA  
44122  
Ph: 216-292-5000  
Fax: 216-292-5036

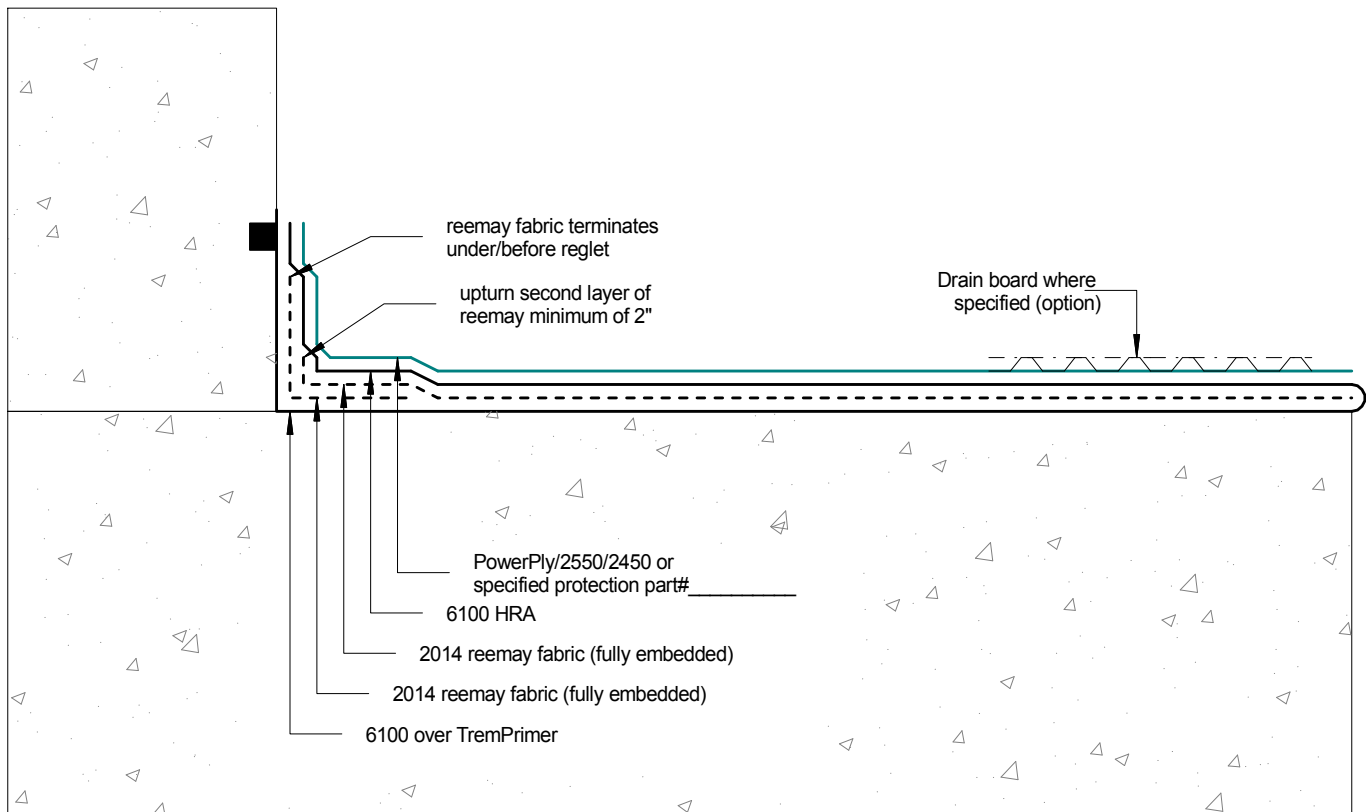
|                      |                 |                            |
|----------------------|-----------------|----------------------------|
| Date:<br>Nov-11-2011 |                 | Drawing No.<br>D-1561-762A |
| Drawn by:<br>G.M.    | Approved:<br><> | Scale:                     |
| Project:             |                 |                            |





## 6100 HRA Reemay Fabric Upturn Detail

detail>> D-1284-764A



**Note:** Reemay fabric upturn should cover the floor/wall transition in 2 layers. Both layers of reemay are not required to be terminated at the same upturn height.

Tremco Canada  
6178 Netherhart Rd.  
Mississauga, On.  
L5T 1B7  
Ph: 905-564-6100  
Fax: 905-564-6110

**Tremco Inc.**  
[www.tremcosealants.com](http://www.tremcosealants.com)

Tremco Inc.  
3735 Green Rd,  
Beachwood, OH. USA  
44122  
Ph: 216-292-5000  
Fax: 216-292-5036

|                             |                        |                                   |
|-----------------------------|------------------------|-----------------------------------|
| <u>Date:</u><br>Dec-13-2011 |                        | <u>Drawing No.</u><br>D-1284-764A |
| <u>Drawn by:</u><br>G.M.    | <u>Approved:</u><br><> | <u>Scale:</u>                     |
| <u>Project:</u>             |                        |                                   |

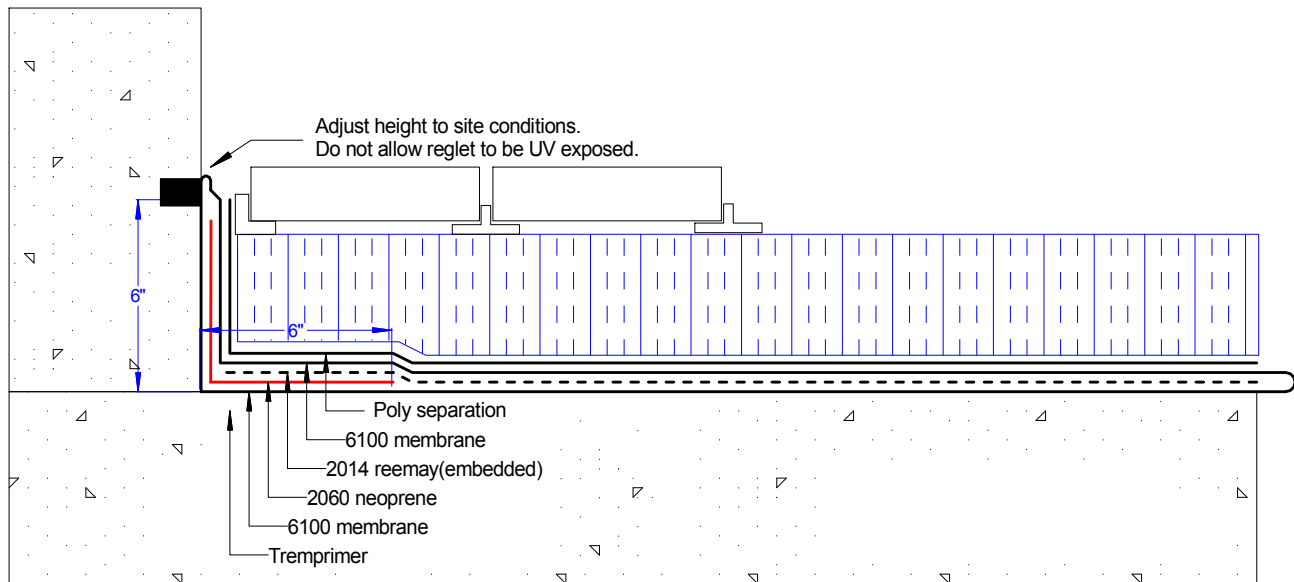




## 6100 Upturn Reglet Termination

Shown: Fully reinforced upturn.

detail>> D-648-733A



Tremco Canada  
6178 Netherhart Rd.  
Mississauga, On.  
L5T 1B7  
Ph: 905-564-6100  
Fax: 905-564-6110

**Tremco Inc.**  
[www.tremcosealants.com](http://www.tremcosealants.com)

Tremco Inc.  
3735 Green Rd,  
Beachwood, OH. USA  
44122  
Ph: 216-292-5000  
Fax: 216-292-5036

|                             |                        |                                  |
|-----------------------------|------------------------|----------------------------------|
| <u>Date:</u><br>Dec-21-2011 |                        | <u>Drawing No.</u><br>D-648-733A |
| <u>Drawn by:</u><br>G.M.    | <u>Approved:</u><br><> | <u>Scale:</u>                    |
| <u>Project:</u>             |                        |                                  |

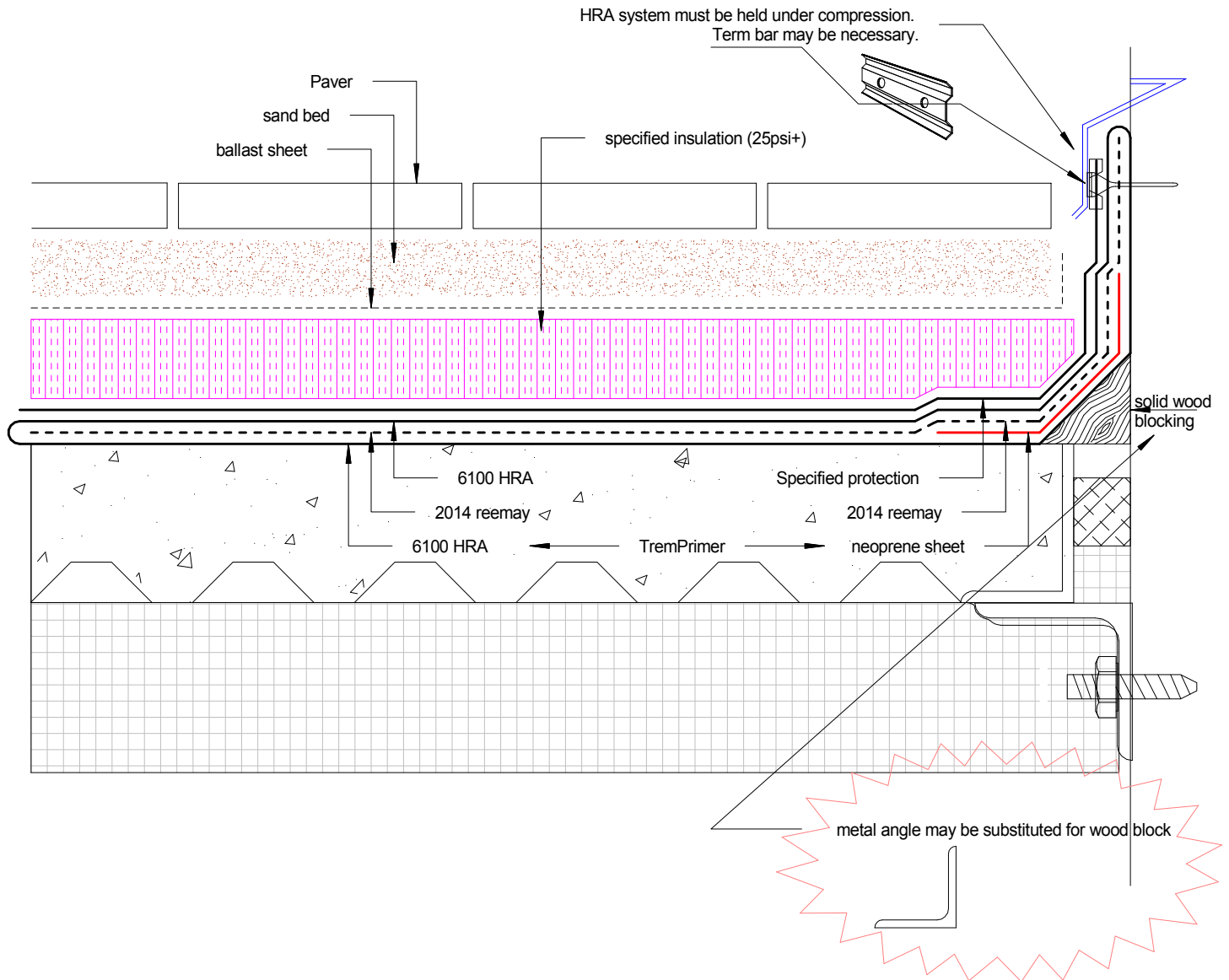




## TP-6100 HRA over Wood Cant/Cove to Parapet Wall Upturn

Shown: 6100 HRA c/w neoprene sheet and reemay fabric over wood block cant.

detail >> D-1312-6A



Tremco Canada  
6178 Netherhart Rd.  
Mississauga, On.  
L5T 1B7  
Ph: 905-564-6100  
Fax: 905-564-6110

**Tremco Inc.**  
www.tremcosealants.com

Tremco Inc.  
3735 Green Rd,  
Beachwood, OH. USA  
44122  
Ph: 216-292-5000  
Fax: 216-292-5036

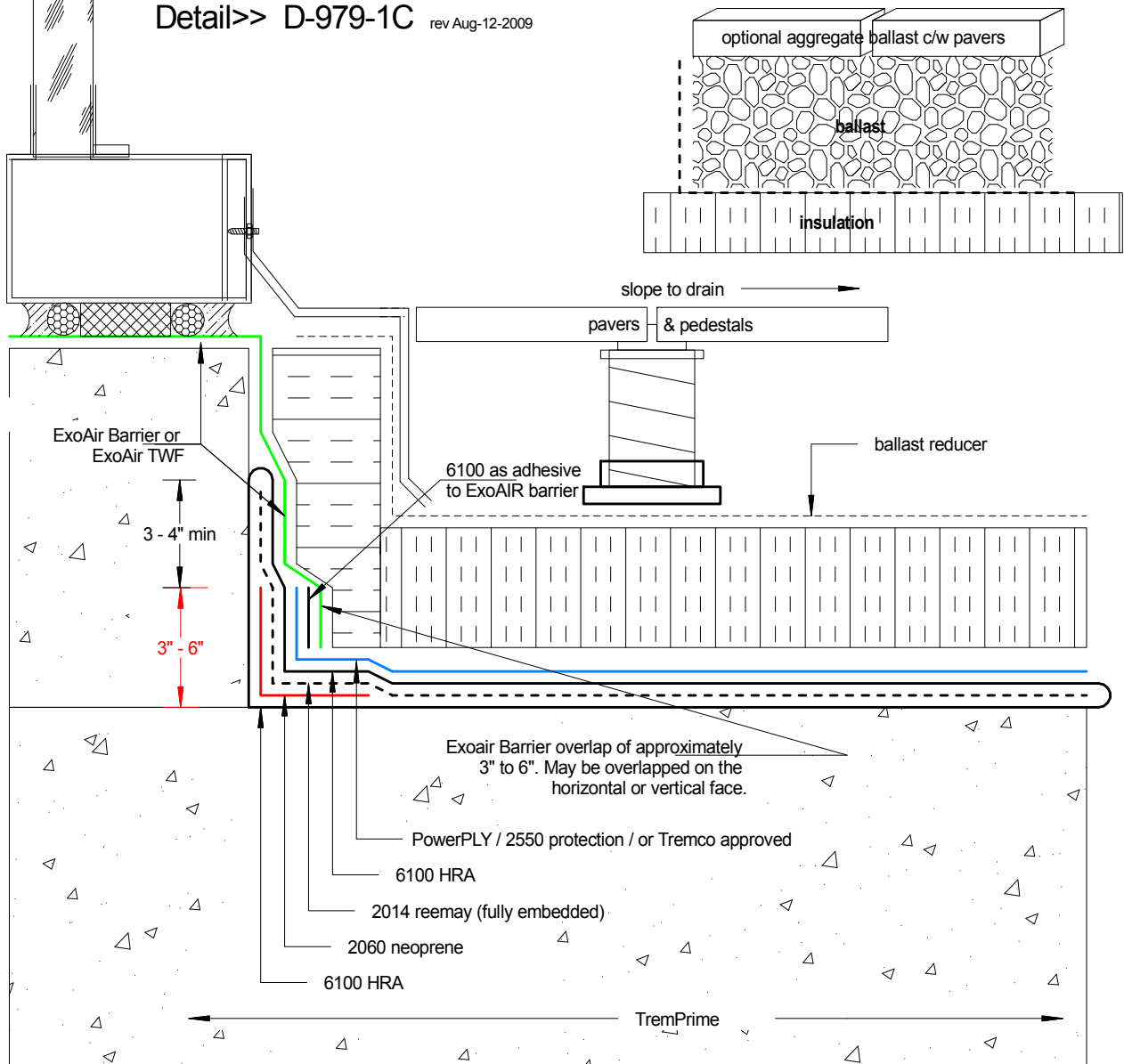
|                      |                 |                          |
|----------------------|-----------------|--------------------------|
| Date:<br>Oct-21-2009 |                 | Drawing No.<br>D-1312-6A |
| Drawn by:<br>G.M.    | Approved:<br><> | Scale:                   |
| Project:             |                 | typical                  |





**Shown:** 6100 HRA Membrane Upturn. ExoAIR 110 air barrier sheet counter flashing serves as termination.

**Detail>> D-979-1C** rev Aug-12-2009



**Note:**

6100 HRA membrane is not restricted to height on the parapet wall. Extend height according to contract documents. Detail shows minimum requirements. Recommended ExoAIR Barrier overlap to 6100 HRA should be a minimum of 3" but may extend to horizontal floor utilizing the overburden weight as termination.

Tremco Canada  
6178 Netherhart Rd.  
Mississauga, On.  
L5T 1B7  
Ph: 905-564-6100  
Fax: 905-564-6110

**Tremco Inc.**  
www.tremcosealants.com

Tremco Inc.  
3735 Green Rd,  
Cleveland, OH. USA  
44122  
Ph: 216-292-5000  
Fax: 216-292-5036

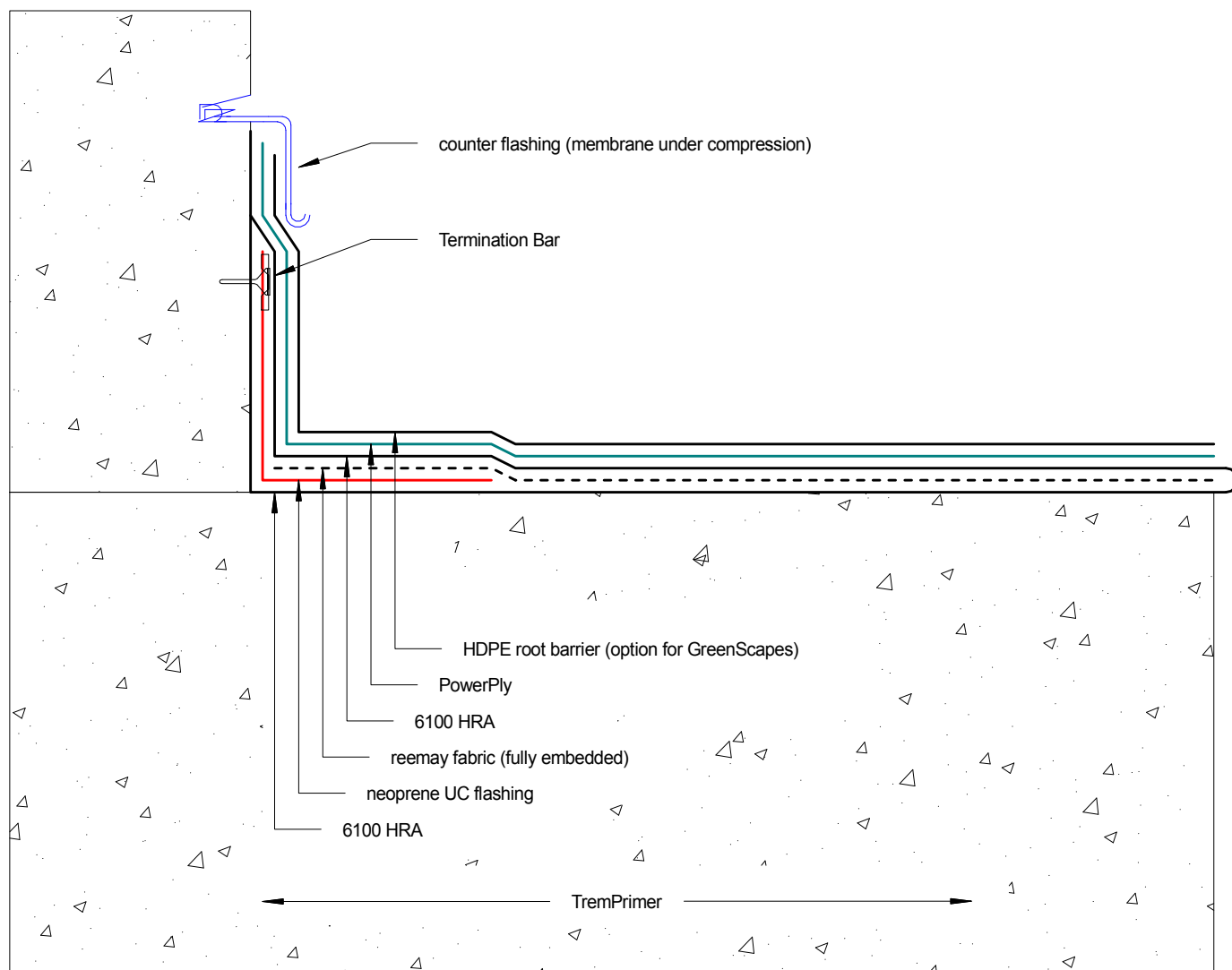
|                                  |                        |                                |
|----------------------------------|------------------------|--------------------------------|
| <u>Date:</u><br>rev: Aug-12-2009 |                        | <u>Drawing No.</u><br>D-979-1C |
| <u>Drawn by:</u><br>G.M.         | <u>Approved:</u><br><> | <u>Scale:</u>                  |
| <u>Project:</u>                  |                        |                                |





## 6100 HRA Upturn (conventional)

Detail>> D1439-1A



Tremco Canada  
6178 Netherhart Rd.  
Mississauga, On.  
L5T 1B7  
Ph: 905-564-6100  
Fax: 905-564-6110

**Tremco Inc.**  
[www.tremcosealants.com](http://www.tremcosealants.com)

Tremco Inc.  
3735 Green Rd,  
Beachwood, OH. USA  
44122  
Ph: 216-292-5000  
Fax: 216-292-5036

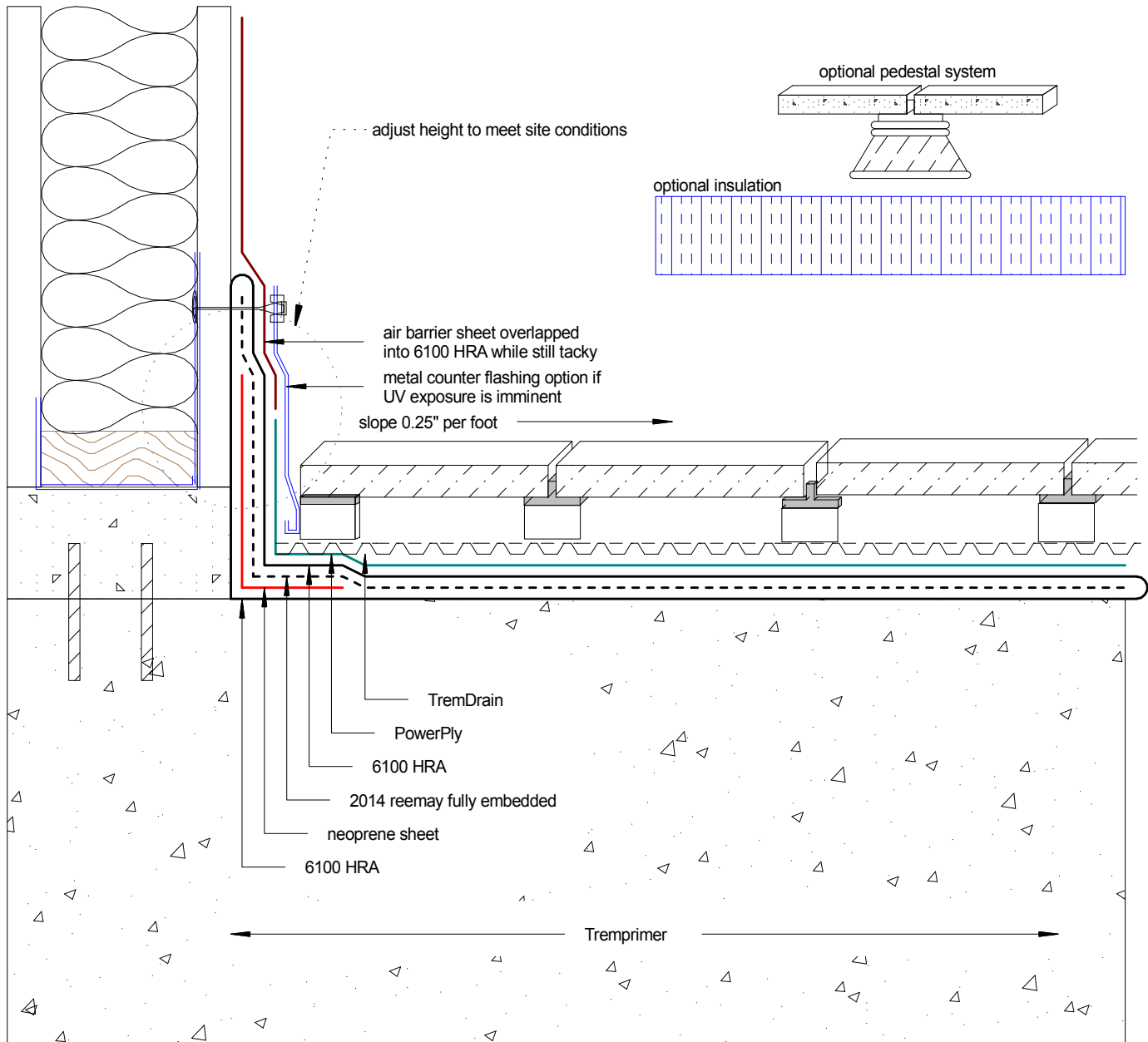
|                     |                 |                          |
|---------------------|-----------------|--------------------------|
| Date:<br>Jul-2-2009 |                 | Drawing No.<br>D-1439-1A |
| Drawn by:<br>G.M.   | Approved:<br><> | Scale:                   |
| Project:            |                 | typical                  |





## 6100 HRA Upturn to Gypsum or Cement board Shown: proper reinforcement.

detail>> D-1488-1A



Tremco Canada  
6178 Netherhart Rd.  
Mississauga, On.  
L5T 1B7  
Ph: 905-564-6100  
Fax: 905-564-6110

**Tremco Inc.**  
[www.tremcosealants.com](http://www.tremcosealants.com)

Tremco Inc.  
3735 Green Rd,  
Beachwood, OH. USA  
44122  
Ph: 216-292-5000  
Fax: 216-292-5036

|                            |                        |                                 |
|----------------------------|------------------------|---------------------------------|
| <u>Date:</u><br>Jul-1-2009 |                        | <u>Drawing No.</u><br>D-1488-1A |
| <u>Drawn by:</u><br>G.M.   | <u>Approved:</u><br><> | <u>Scale:</u>                   |
| <u>Project:</u><br>typical |                        |                                 |

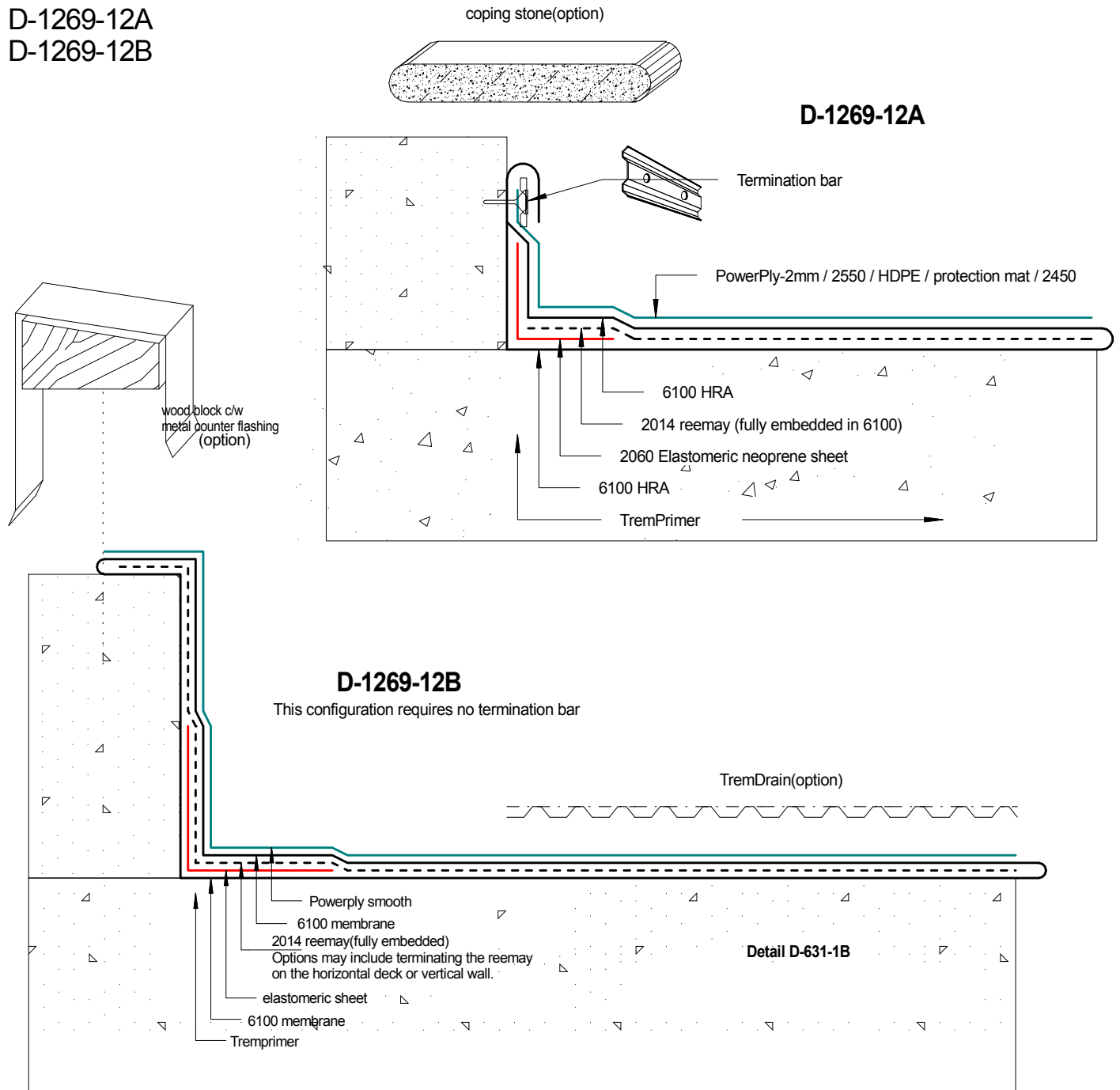




## TP-6100 upturn to parapet wall

D-1269-12A

D-1269-12B



Tremco Canada  
6178 Netherhart Rd.  
Mississauga, On.  
L5T 1B7  
Ph: 905-564-6100  
Fax: 905-564-6110

**Tremco Inc.**  
[www.tremcosealants.com](http://www.tremcosealants.com)

Tremco Inc.  
3735 Green Rd,  
Cleveland, OH. USA  
44122  
Ph: 216-292-5000  
Fax: 216-292-5036

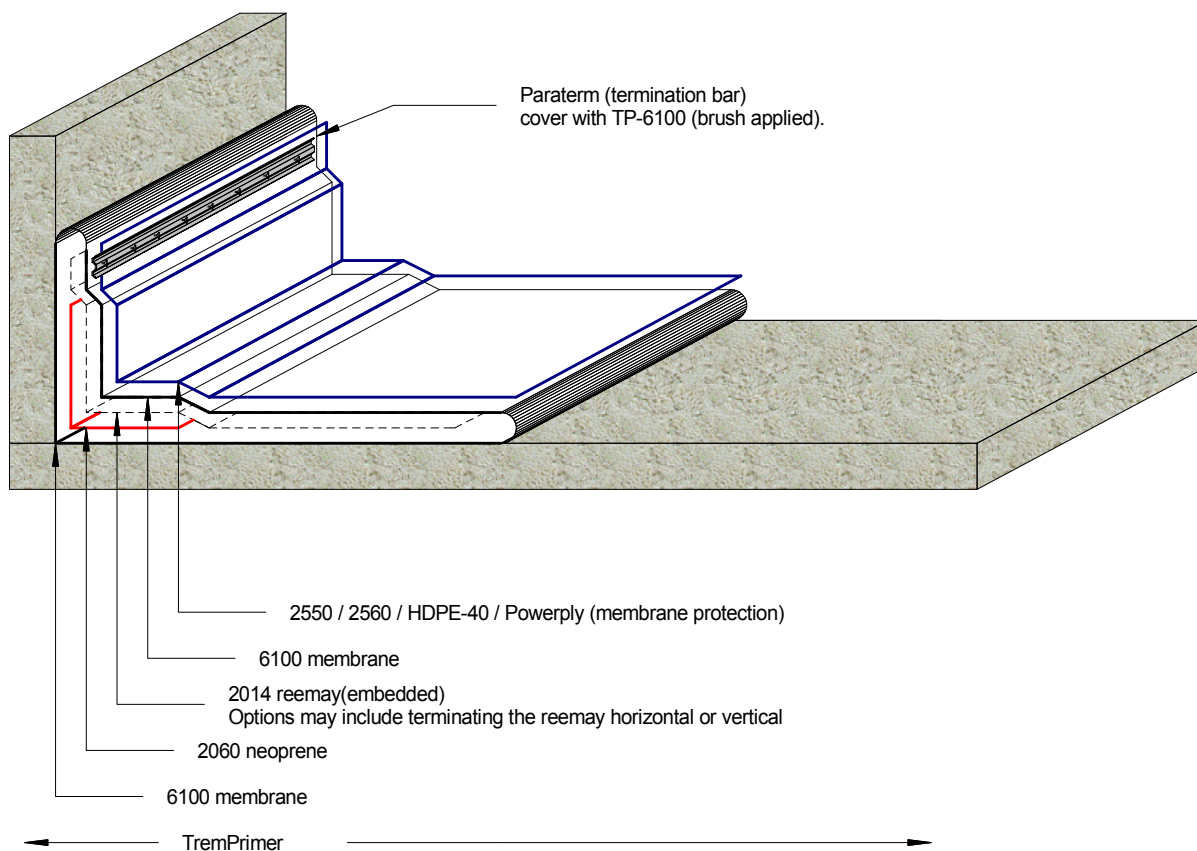
|                   |                 |                             |
|-------------------|-----------------|-----------------------------|
| Date: Jan-12-2009 |                 | Drawing No.<br>D-1269-12A-B |
| Drawn by:<br>G.M. | Approved:<br><> | Scale:                      |
| Project:          |                 |                             |





Upturn detail c/w Termination bar  
TP-6100 HRA membrane system to parapet wall

draft>> D-608-2A



Tremco Canada  
6178 Netherhart Rd.  
Mississauga, On.  
L5T 1B7  
Ph: 905-564-6100  
Fax: 905-564-6110

**Tremco Inc.**  
[www.tremcosealants.com](http://www.tremcosealants.com)

Tremco Inc.  
3735 Green Rd,  
Cleveland, OH. USA  
44122  
Ph:216-292-5000  
Fax: 216-292-5036

Date:  
Nov-30-2008

Drawing No.  
D-608-2A

Drawn by:  
G.M.

Approved:  
<>

Scale:

Project:

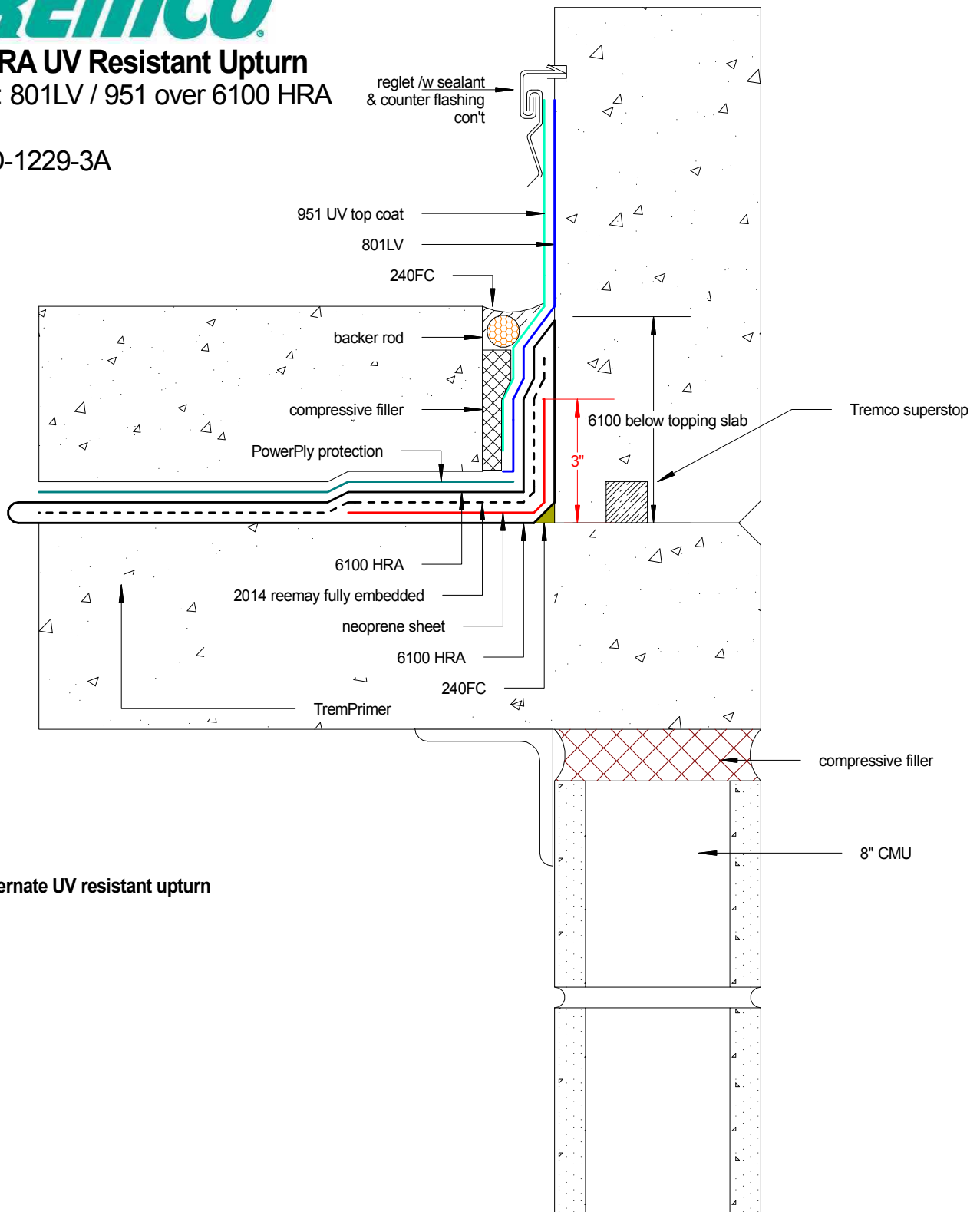




## 6100HRA UV Resistant Upturn

Shown: 801LV / 951 over 6100 HRA

detail D-1229-3A



Alternate UV resistant upturn

Tremco Canada  
6178 Netherhart Rd.  
Mississauga, On.  
L5T 1B7  
Ph: 905-564-6100  
Fax: 905-564-6110

**Tremco Inc.**  
[www.tremcosealants.com](http://www.tremcosealants.com)

Tremco Inc.  
3735 Green Rd,  
Cleveland, OH. USA  
44122  
Ph: 216-292-5000  
Fax: 216-292-5036

Date:  
Mar-9-2009

Drawing No.  
D-1229-3A

Drawn by: G.M.  
Approved: <>

Scale:

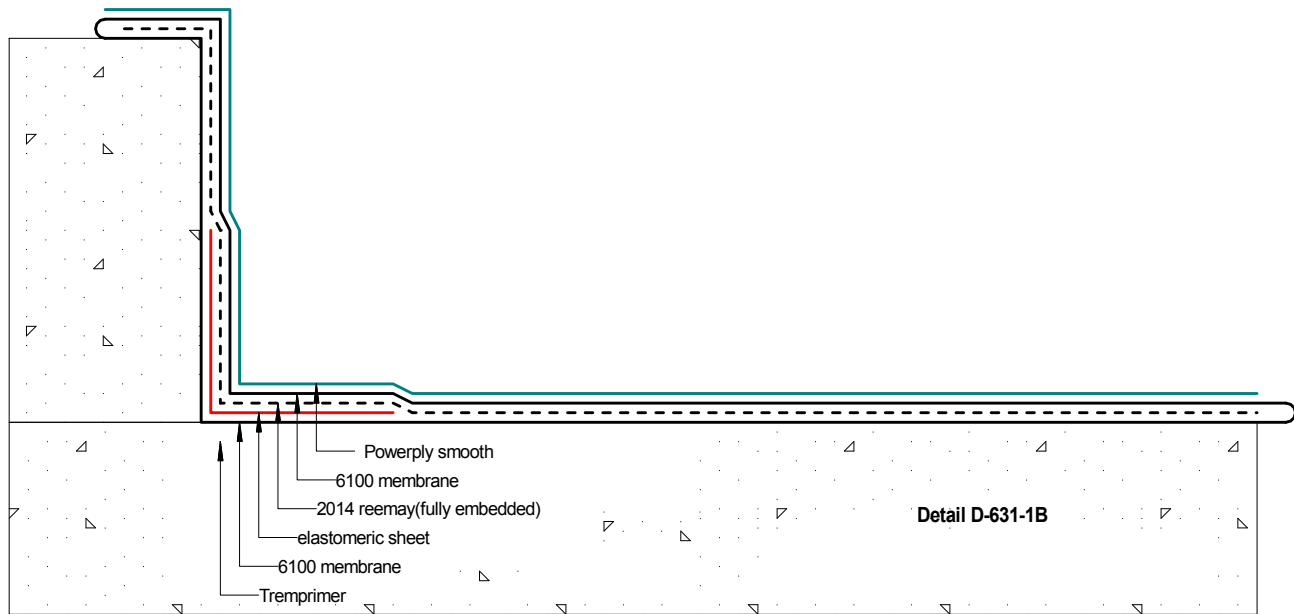
Project:





TP-6100 upturn to parapet wall

D-631-1B



Tremco Canada  
6178 Netherhart Rd.  
Mississauga, On.  
L5T 1B7  
Ph: 905-564-6100  
Fax: 905-564-6110

**Tremco Inc.**  
www.tremcosealants.com

Tremco Inc.  
3735 Green Rd,  
Cleveland, OH. USA  
44122  
Ph: 216-292-5000  
Fax: 216-292-5036

|                          |                        |                                |
|--------------------------|------------------------|--------------------------------|
| <u>Date:</u> Oct-30-2008 |                        | <u>Drawing No.</u><br>D-631-1B |
| <u>Drawn by:</u><br>G.M. | <u>Approved:</u><br><> | <u>Scale:</u>                  |
| <u>Project:</u>          |                        |                                |



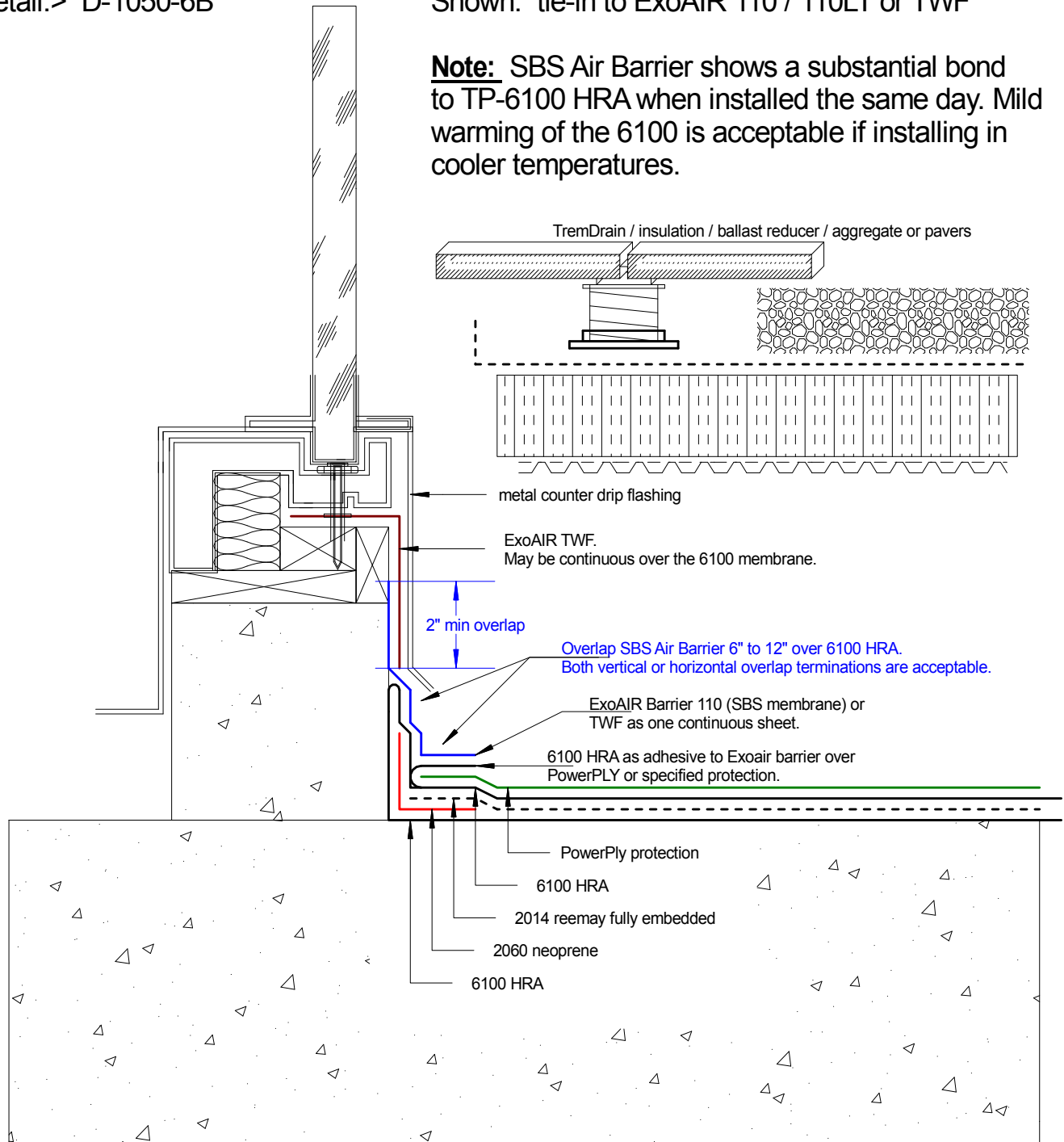


detail:> D-1050-6B

### 6100 HRA membrane system

Shown: tie-in to ExoAIR 110 / 110LT or TWF

**Note:** SBS Air Barrier shows a substantial bond to TP-6100 HRA when installed the same day. Mild warming of the 6100 is acceptable if installing in cooler temperatures.



Tremco Canada  
6178 Netherhart Rd.  
Mississauga, On.  
L5T 1B7  
Ph: 905-564-6100  
Fax: 905-564-6110

**Tremco Inc.**  
www.tremcosealants.com

Tremco Inc.  
3735 Green Rd,  
Cleveland, OH. USA  
44122  
Ph: 216-292-5000  
Fax: 216-292-5036

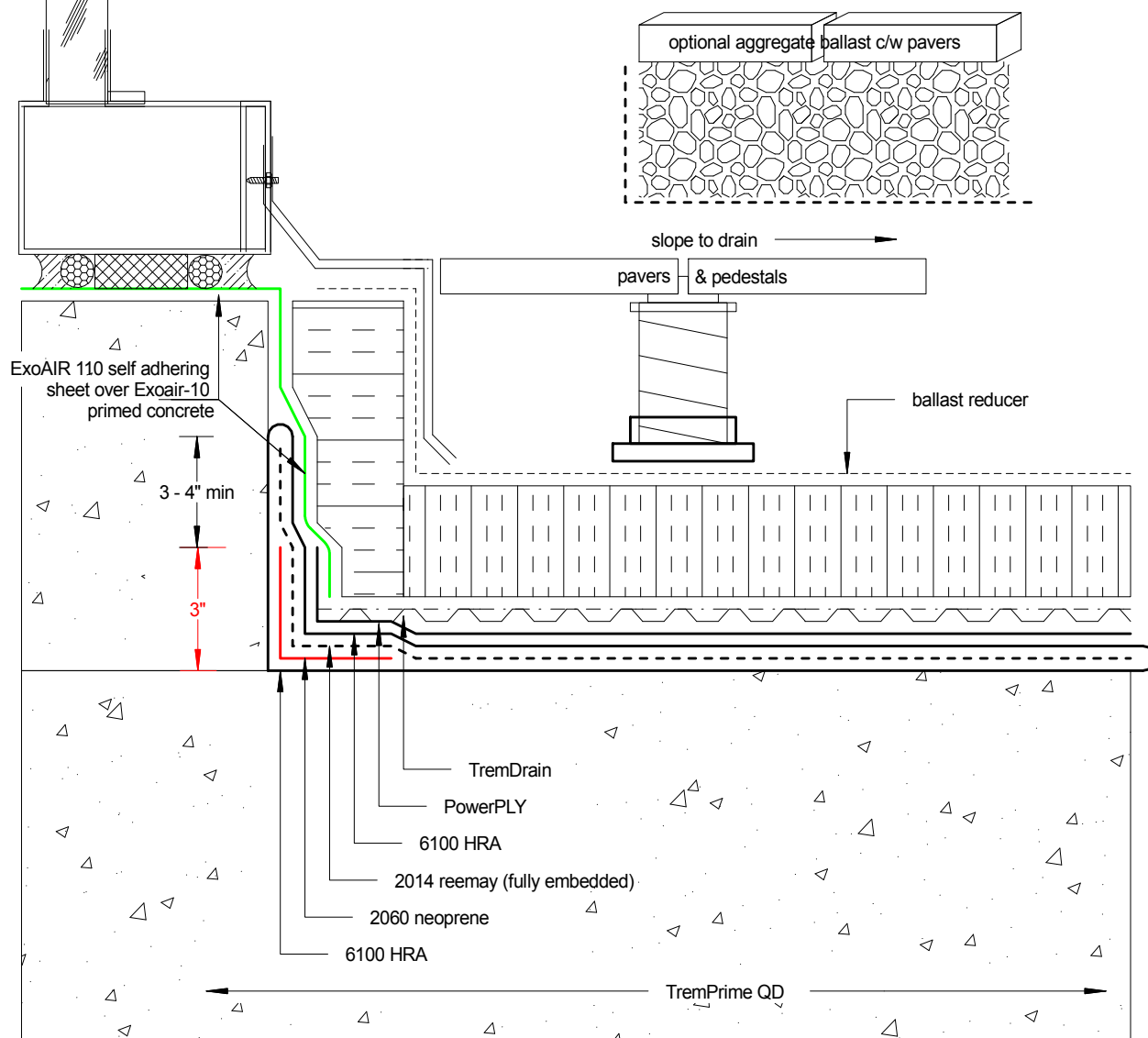
|                      |                 |                          |
|----------------------|-----------------|--------------------------|
| Date:<br>Aug-24-2008 |                 | Drawing No.<br>D-1050-6B |
| Drawn by:<br>G.M.    | Approved:<br><> | Scale:                   |
| Project:             |                 |                          |





**Shown:** 6100 HRA Membrane Upturn. ExoAIR 110 air barrier sheet counter flashing serves as termination.

Detail>> D-979-1B



**Note:**

6100 HRA membrane is not restricted to height on the parapet wall. Extend height according to contract documents. Detail shows minimum requirements. ExoAIR overlap to 6100 HRA should be a minimum of 4" but may extend to horizontal floor utilizing the overburden weight as termination.

Tremco Canada  
6178 Netherhart Rd.  
Mississauga, On.  
L5T 1B7  
Ph: 905-564-6100  
Fax: 905-564-6110

**Tremco Inc.**  
www.tremcosealants.com

Tremco Inc.  
3735 Green Rd,  
Cleveland, OH. USA  
44122  
Ph: 216-292-5000  
Fax: 216-292-5036

Date:  
Jun-19-2008

Drawing No.  
D-979-1B

Drawn by: G.M.  
Approved: <>

Scale:

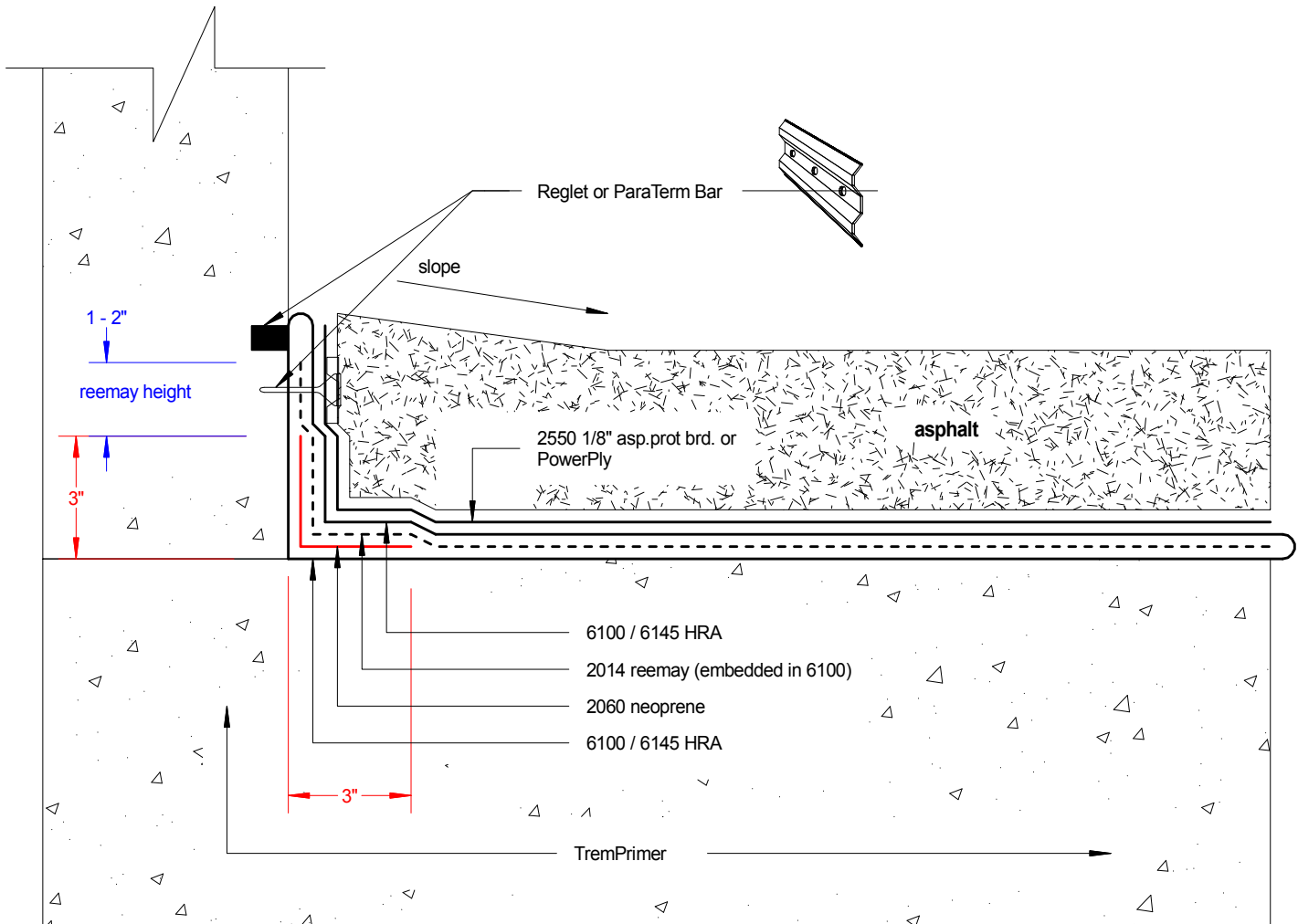
Project:





6100 / 6145 HRA membrane system. Application  
to concrete parking or ramp.

detail>>> D-943-5A



Tremco Canada  
6178 Netherhart Rd.  
Mississauga, On.  
L5T 1B7  
Ph: 905-564-6100  
Fax: 905-564-6110

**Tremco Inc.**  
www.tremcosealants.com

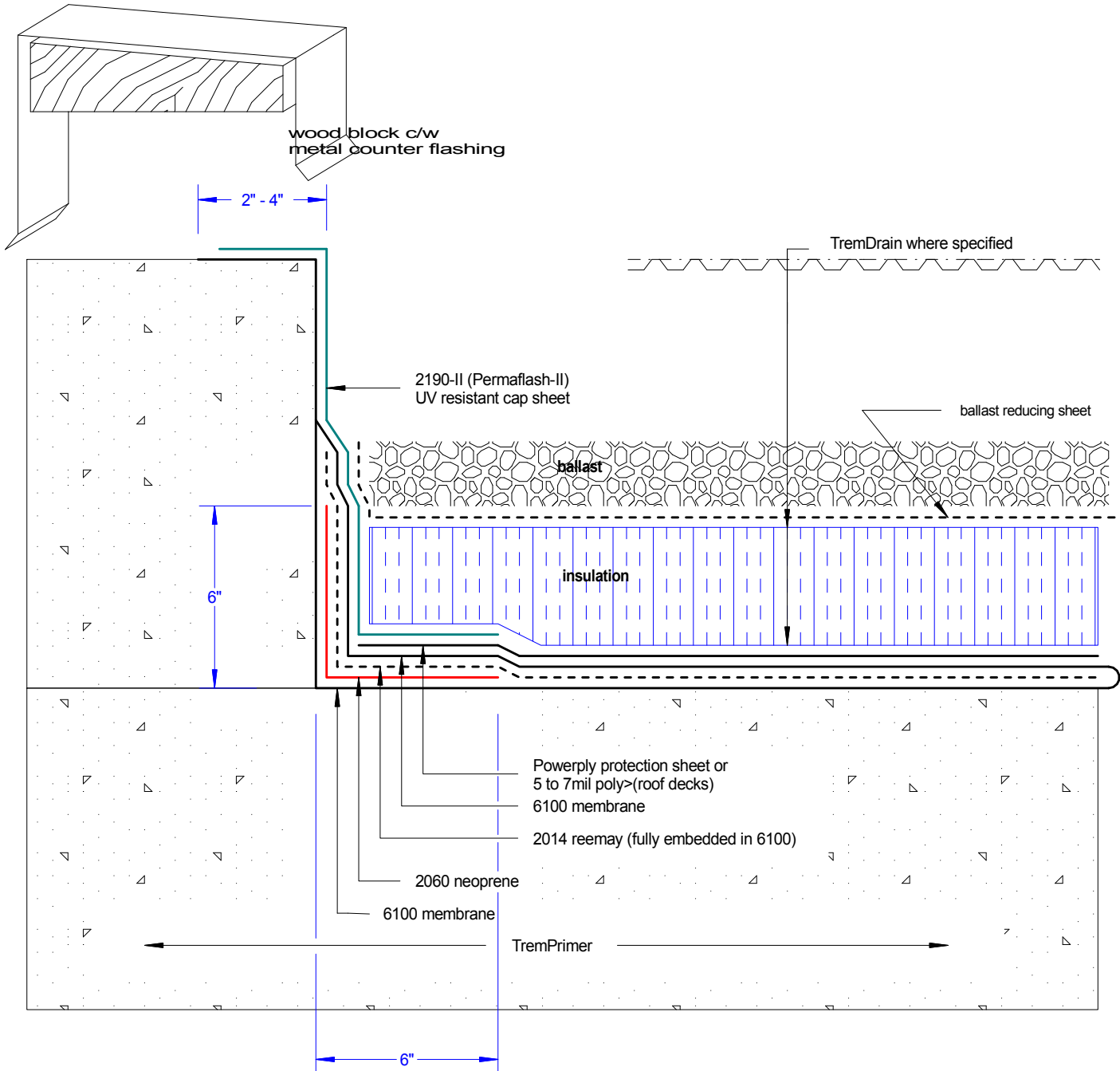
Tremco Inc.  
3735 Green Rd,  
Cleveland, OH. USA  
44122  
Ph: 216-292-5000  
Fax: 216-292-5036

|                            |                        |                                |
|----------------------------|------------------------|--------------------------------|
| <u>Date:</u><br>May-6-2008 |                        | <u>Drawing No.</u><br>D-943-5A |
| <u>Drawn by:</u><br>G.M.   | <u>Approved:</u><br><> | <u>Scale:</u>                  |
| <u>Project:</u><br>typical |                        |                                |





## 6100 HRA membrane to UV exposed parapet detail>>>D-922-1A



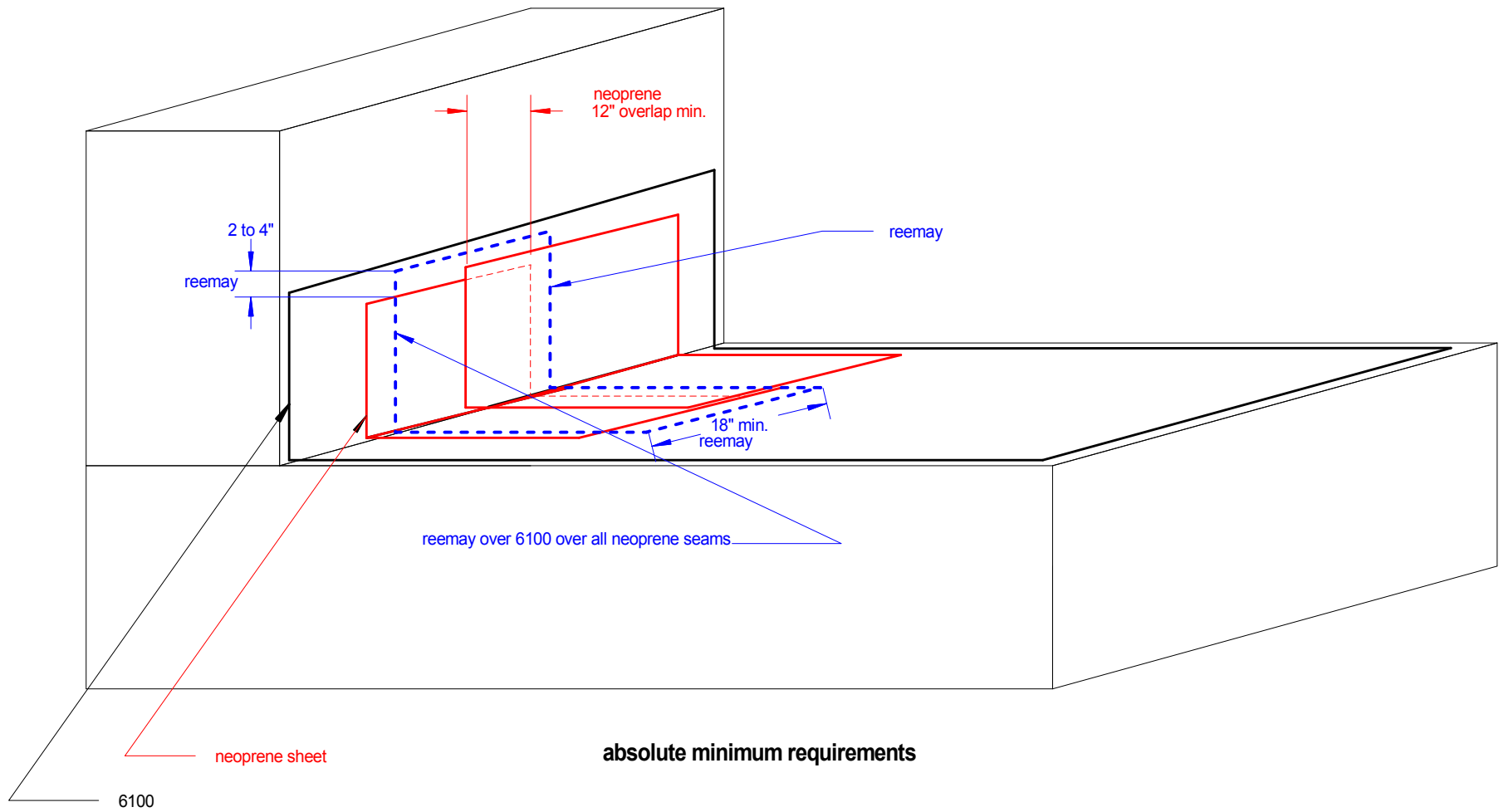
Tremco Canada  
6178 Netherhart Rd.  
Mississauga, On.  
L5T 1B7  
Ph: 905-564-6100  
Fax: 905-564-6110

**Tremco Inc.**  
[www.tremcosealants.com](http://www.tremcosealants.com)

Tremco Inc.  
3735 Green Rd,  
Cleveland, OH. USA  
44122  
Ph: 216-292-5000  
Fax: 216-292-5036

|                            |                        |                                |
|----------------------------|------------------------|--------------------------------|
| <u>Date:</u><br>May-6-2008 |                        | <u>Drawing No.</u><br>D-922-1A |
| <u>Drawn by:</u><br>G.M.   | <u>Approved:</u><br><> | <u>Scale:</u>                  |
| <u>Project:</u><br>typical |                        |                                |



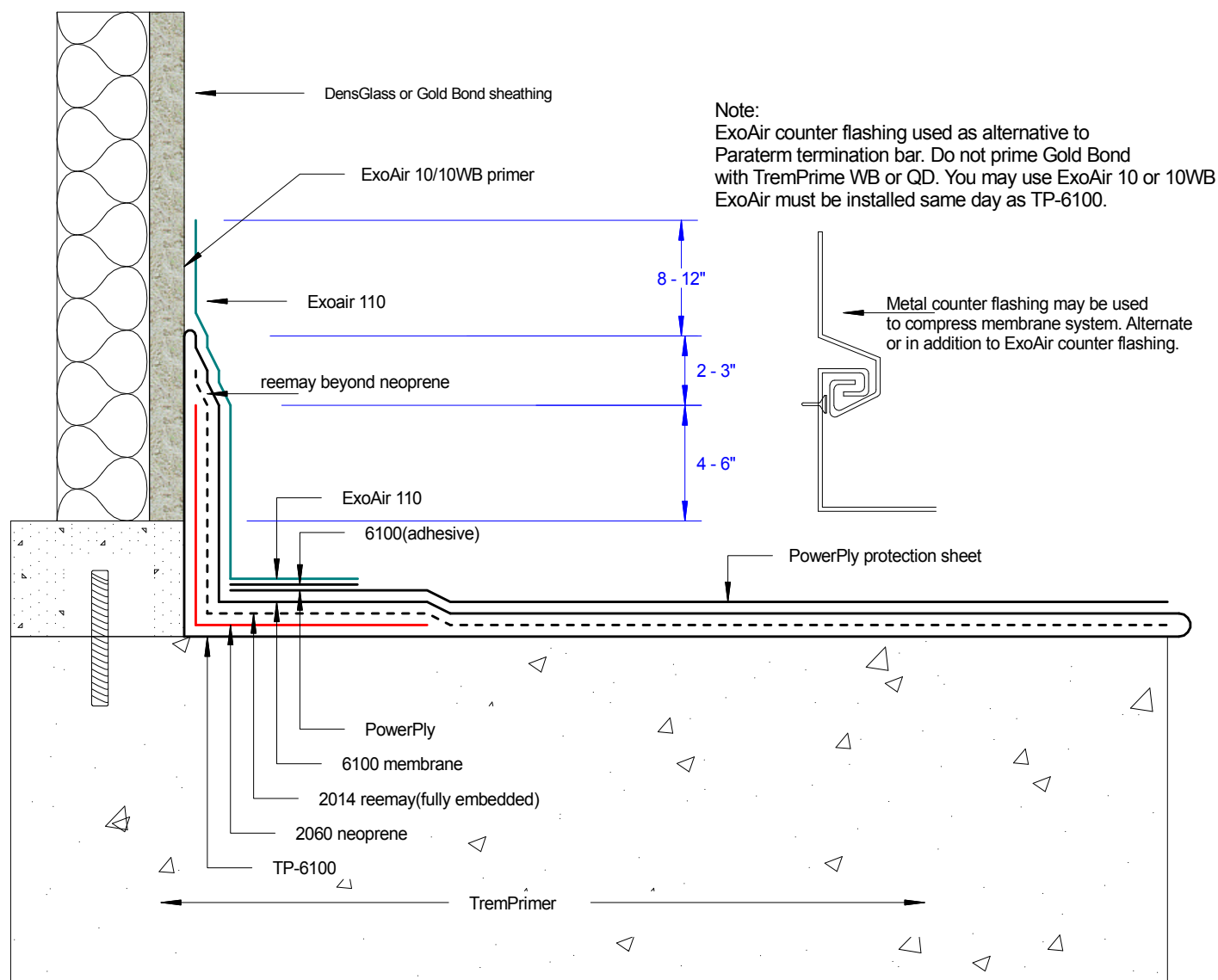






UPTURN:

Shown> TP-6100 HRA installation to DensGlass or Gold Bond



Tremco Canada  
6178 Netherhart Rd.  
Mississauga, On.  
L5T 1B7  
Ph: 905-564-6100  
Fax: 905-564-6110

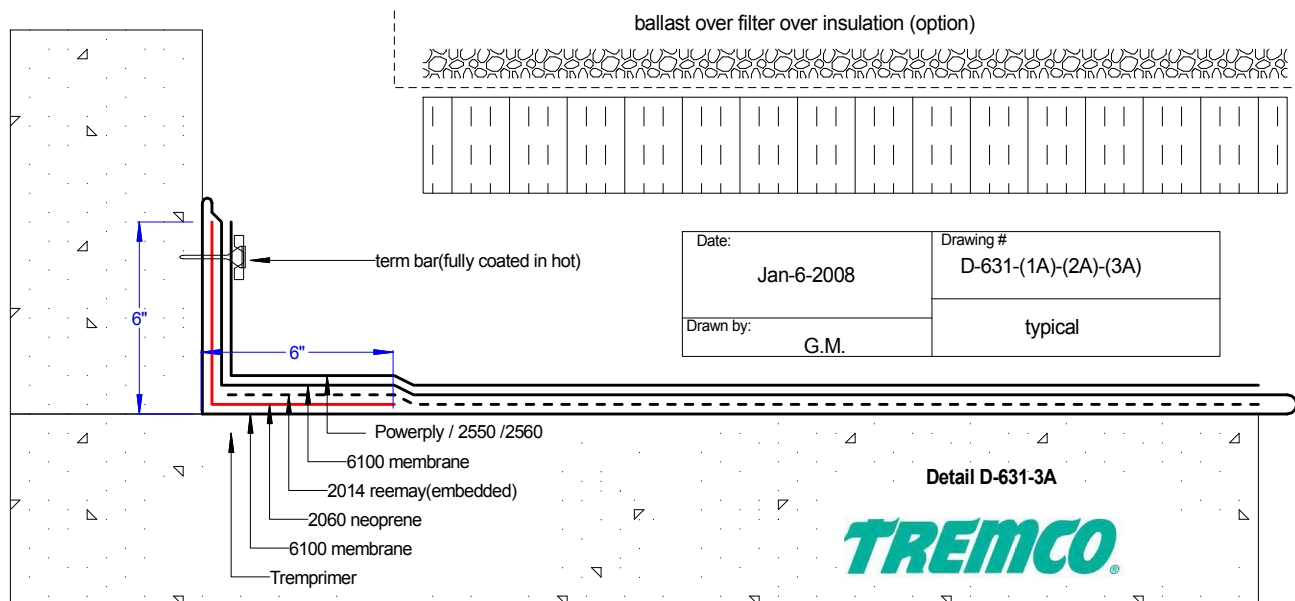
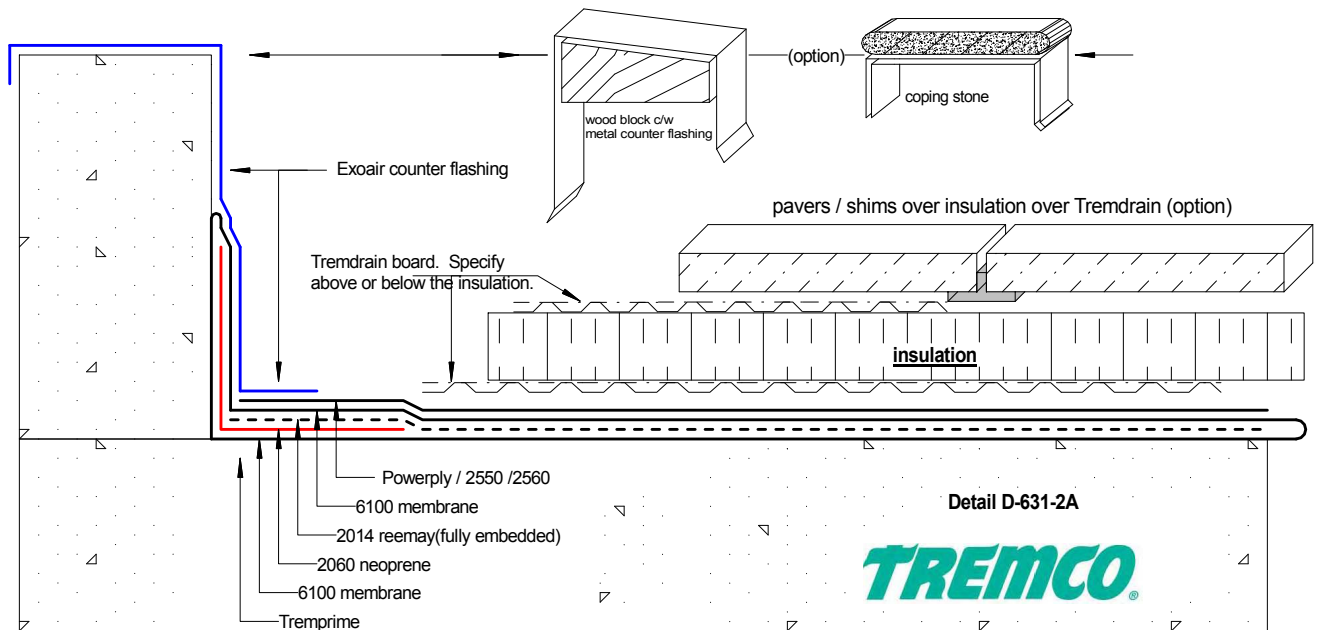
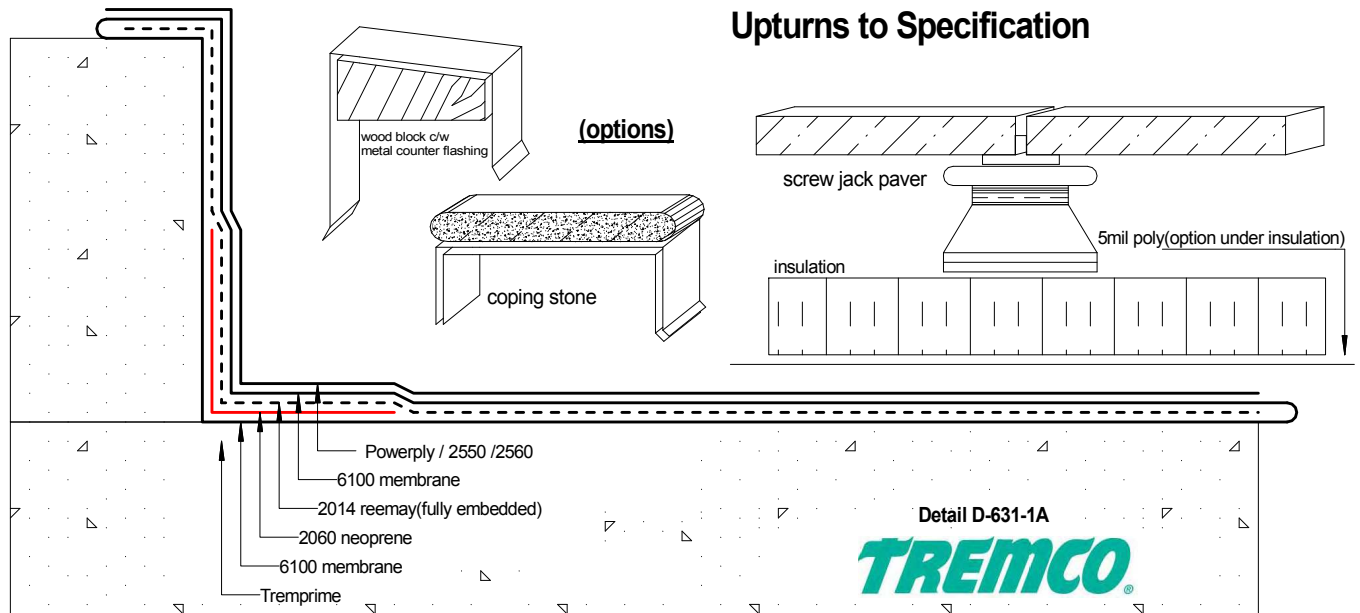
**Tremco Inc.**  
www.tremcosealants.com

Tremco Inc.  
3735 Green Rd,  
Cleveland, OH. USA  
44122  
Ph: 216-292-5000  
Fax: 216-292-5036

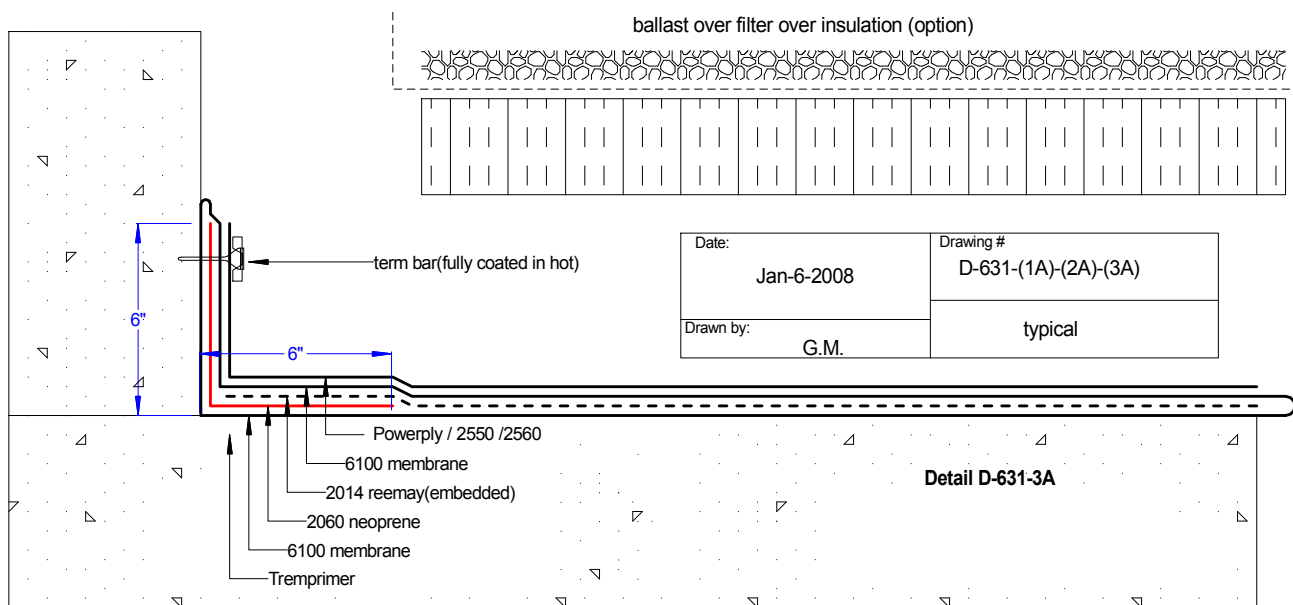
|                      |                 |                         |
|----------------------|-----------------|-------------------------|
| Date:<br>Feb-22-2008 |                 | Drawing No.<br>D-821-1A |
| Drawn by:<br>G.M.    | Approved:<br><> | Scale:                  |
| Project:<br>typical  |                 |                         |



## Upturns to Specification

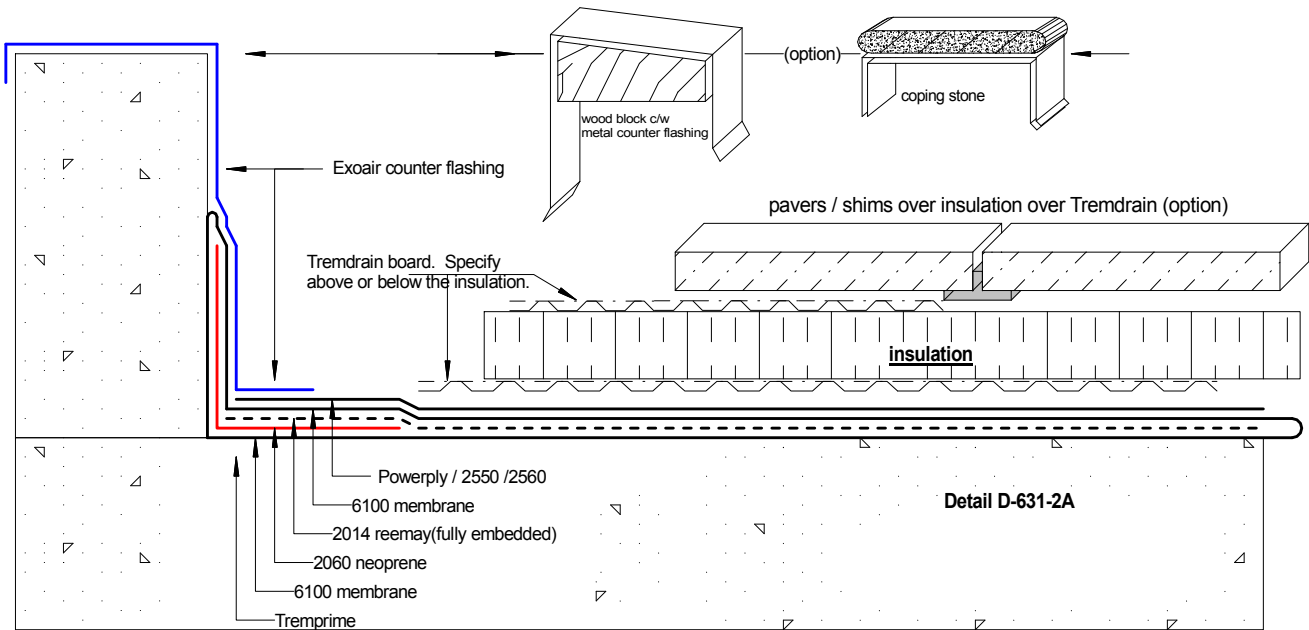








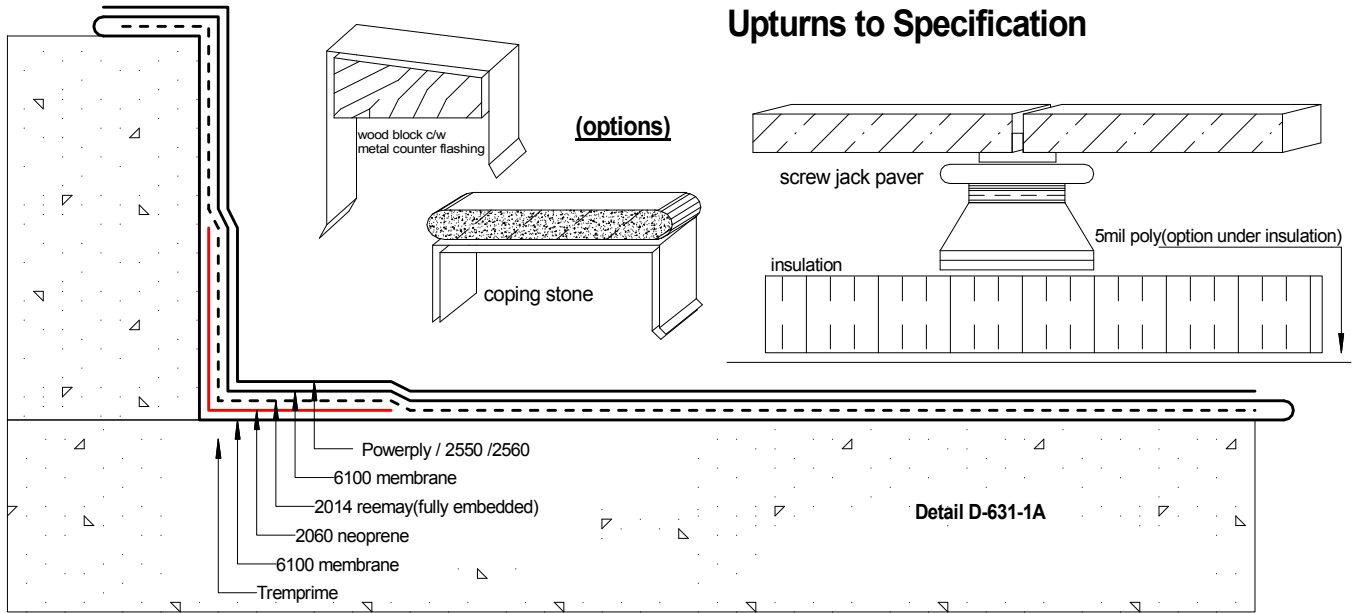
**TREMCO®**







## Upturns to Specification







Upturn detail c/w Termination bar  
TP-6100 HRA membrane system to parapet wall

draft>> D-608-2A

