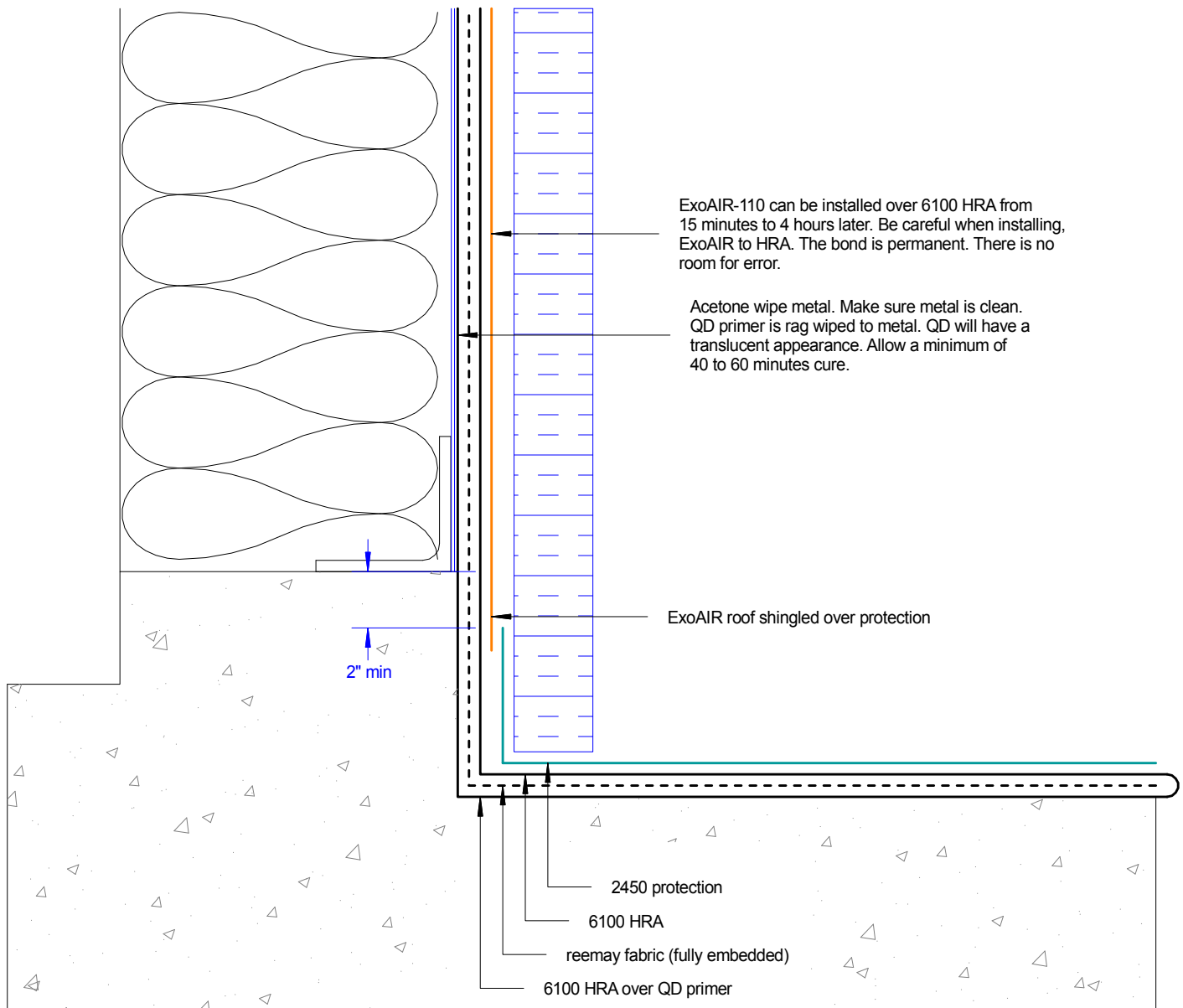




## 6100 Upturn to Gypsum with ExoAIR counter flashing

detail>> D-1599-282A Mar-29-2012



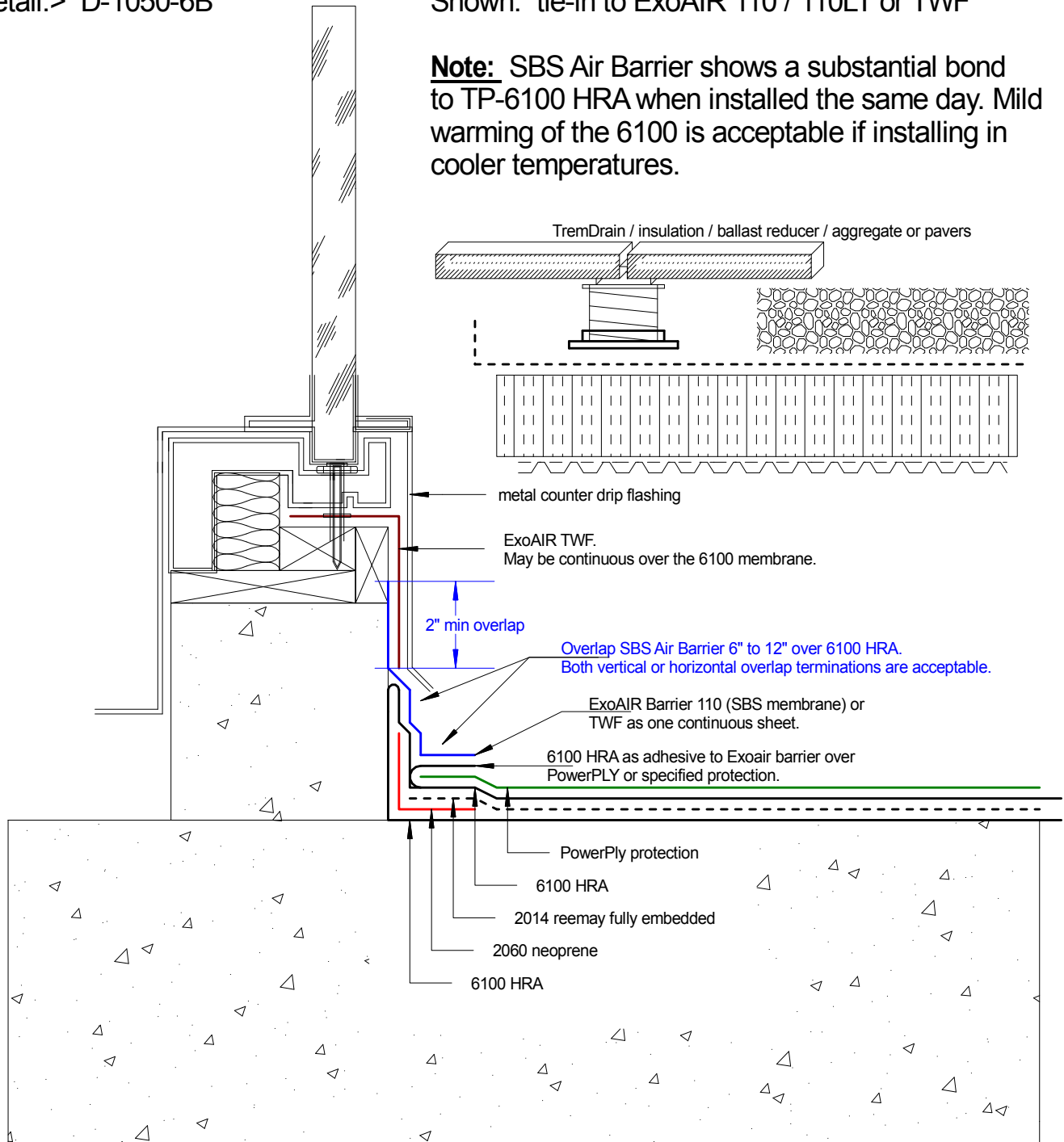


detail:> D-1050-6B

### 6100 HRA membrane system

Shown: tie-in to ExoAIR 110 / 110LT or TWF

**Note:** SBS Air Barrier shows a substantial bond to TP-6100 HRA when installed the same day. Mild warming of the 6100 is acceptable if installing in cooler temperatures.



Tremco Canada  
6178 Netherhart Rd.  
Mississauga, On.  
L5T 1B7  
Ph: 905-564-6100  
Fax: 905-564-6110

**Tremco Inc.**  
www.tremcosealants.com

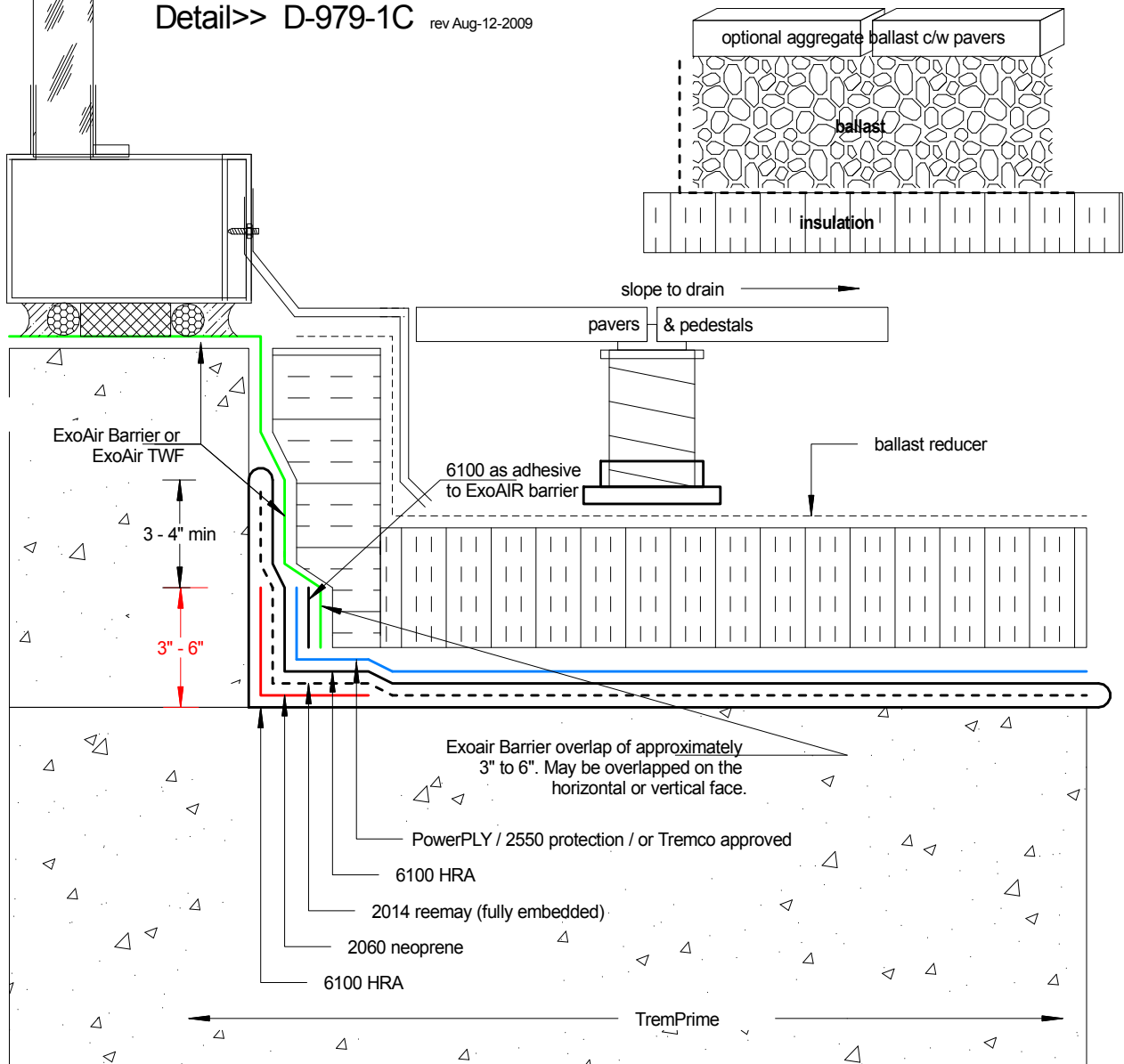
Tremco Inc.  
3735 Green Rd,  
Cleveland, OH. USA  
44122  
Ph: 216-292-5000  
Fax: 216-292-5036

Date: Aug-24-2008		Drawing No. D-1050-6B
Drawn by: G.M.	Approved: <>	Scale:
Project:		



**Shown:** 6100 HRA Membrane Upturn. ExoAIR 110 air barrier sheet counter flashing serves as termination.

**Detail>> D-979-1C** rev Aug-12-2009



**Note:**

6100 HRA membrane is not restricted to height on the parapet wall. Extend height according to contract documents. Detail shows minimum requirements. Recommended ExoAIR Barrier overlap to 6100 HRA should be a minimum of 3" but may extend to horizontal floor utilizing the overburden weight as termination.

Tremco Canada  
6178 Netherhart Rd.  
Mississauga, On.  
L5T 1B7  
Ph: 905-564-6100  
Fax: 905-564-6110

**Tremco Inc.**  
www.tremcosealants.com

Tremco Inc.  
3735 Green Rd,  
Cleveland, OH. USA  
44122  
Ph: 216-292-5000  
Fax: 216-292-5036

<u>Date:</u> rev: Aug-12-2009		<u>Drawing No.</u> D-979-1C
<u>Drawn by:</u> G.M.	<u>Approved:</u> <>	<u>Scale:</u>
<u>Project:</u>		