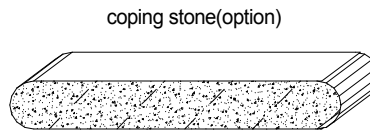
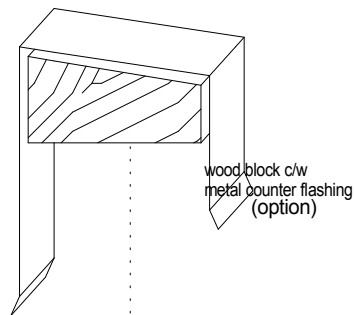




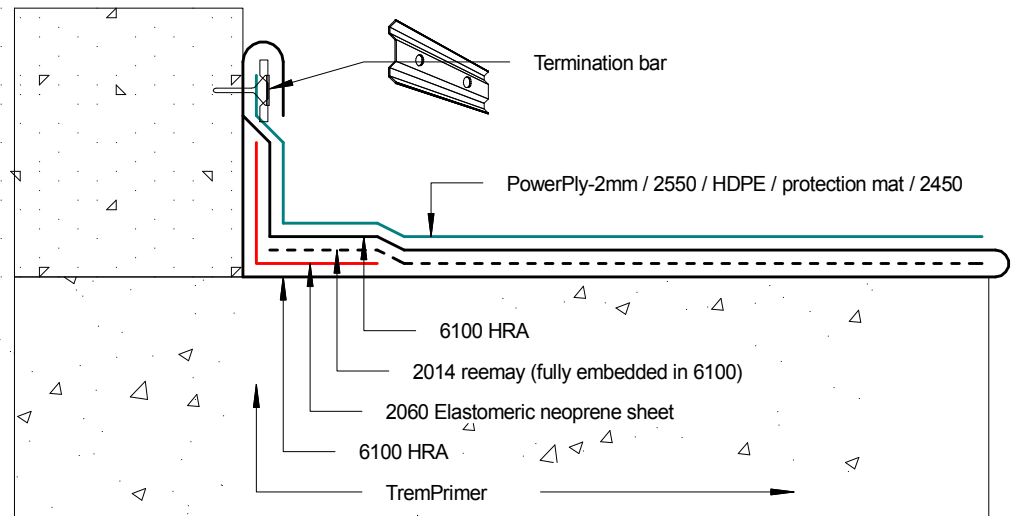
## TP-6100 upturn to parapet wall

D-1269-12A

D-1269-12B

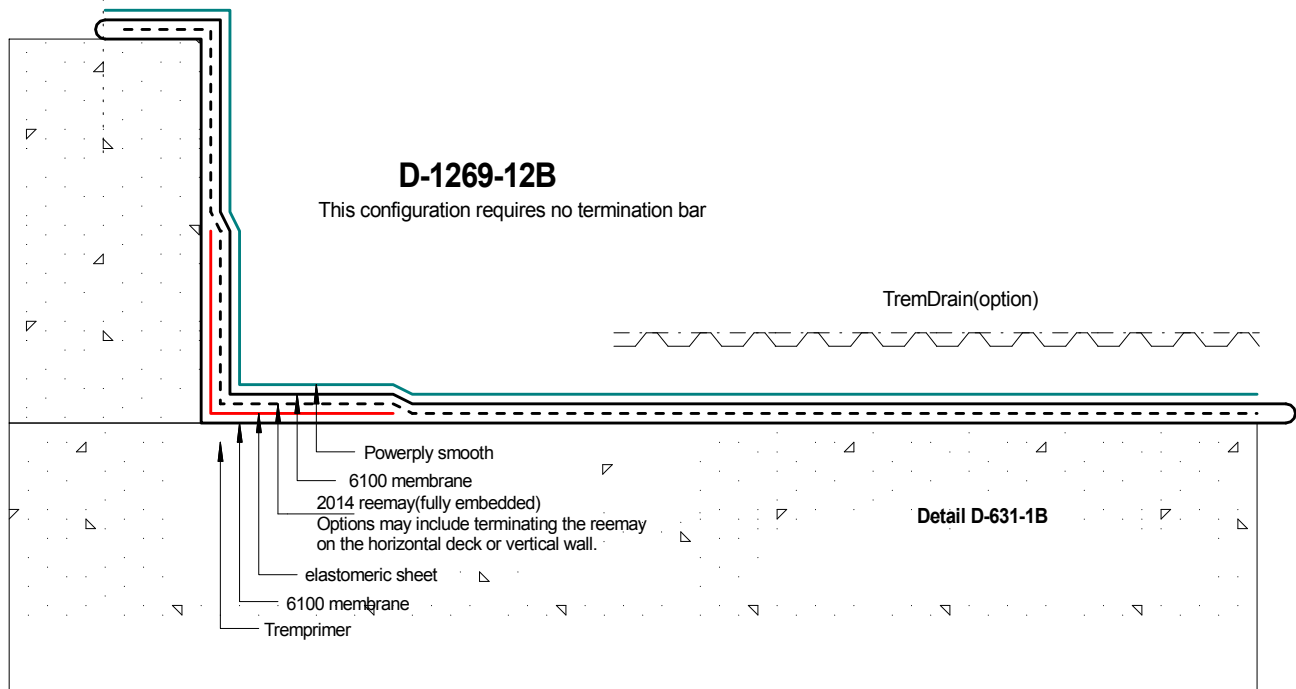


### D-1269-12A



### D-1269-12B

This configuration requires no termination bar



Tremco Canada  
6178 Netherhart Rd.  
Mississauga, On.  
L5T 1B7  
Ph: 905-564-6100  
Fax: 905-564-6110

**Tremco Inc.**  
[www.tremcosealants.com](http://www.tremcosealants.com)

Tremco Inc.  
3735 Green Rd,  
Cleveland, OH. USA  
44122  
Ph: 216-292-5000  
Fax: 216-292-5036

Date: Jan-12-2009		Drawing No. D-1269-12A-B
Drawn by: G.M.	Approved: <>	Scale:
Project:		