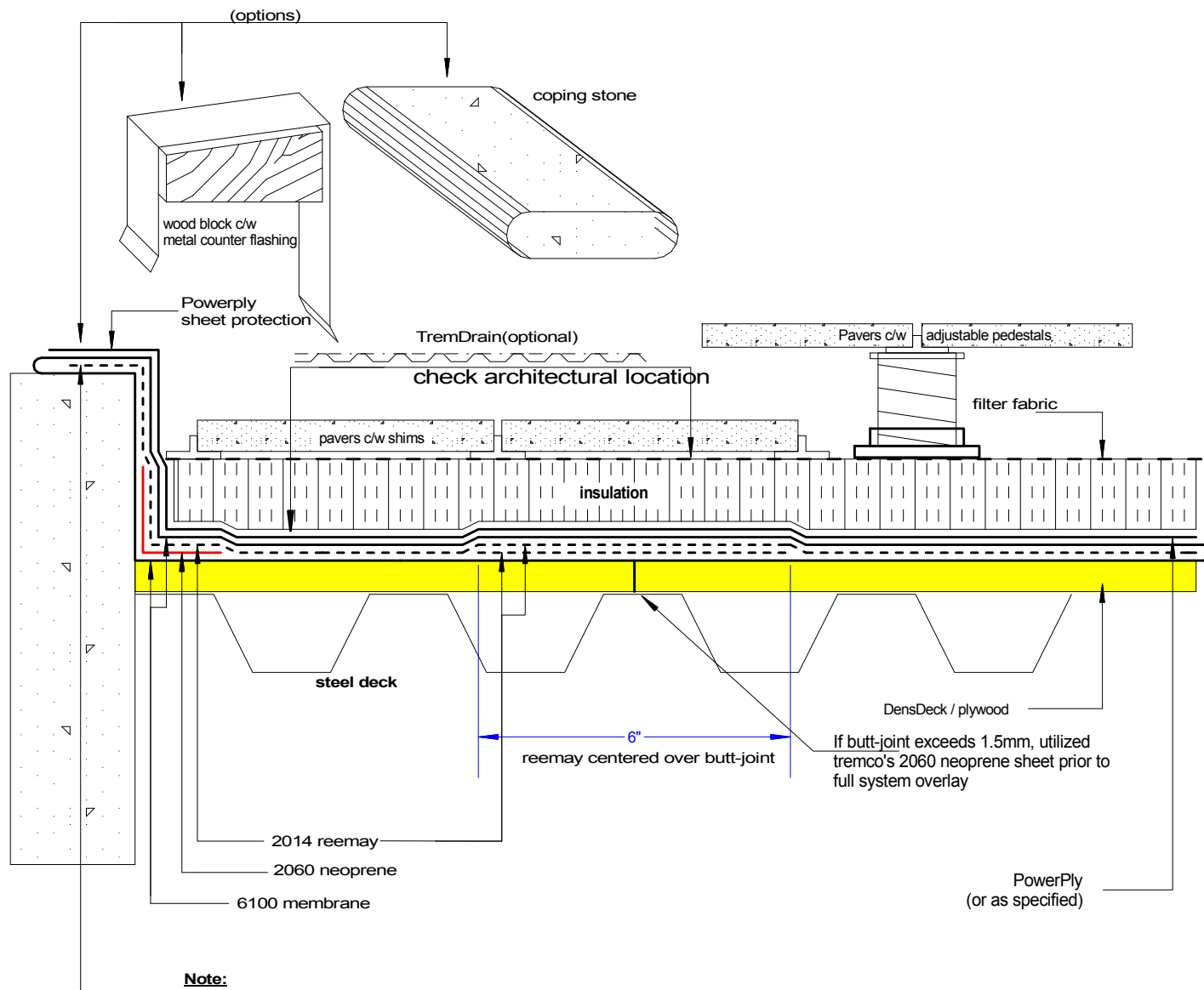




## Typical DensDeck Prime / Plywood waterproofing detail c/w hot rubberized membrane



**Note:**

When reemay is carried over the 2060 neoprene reinforced upturn, no seams will be evident. This procedure ensures all seams are covered. Also eliminates fish mouths in the sheet rubber.

Tremco Canada  
6178 Netherhart Rd.  
Mississauga, On.  
L5T 1B7  
Ph: 905-564-6100  
Fax: 905-564-6110

**Tremco Inc.**  
[www.tremcosealants.com](http://www.tremcosealants.com)

Tremco Inc.  
3735 Green Rd,  
Cleveland, OH. USA  
44122  
Ph: 216-292-5000  
Fax: 216-292-5036

Date: Jun-2-2008

Drawing No.  
D-208-1F

Drawn by: G.M.  
Approved: <>

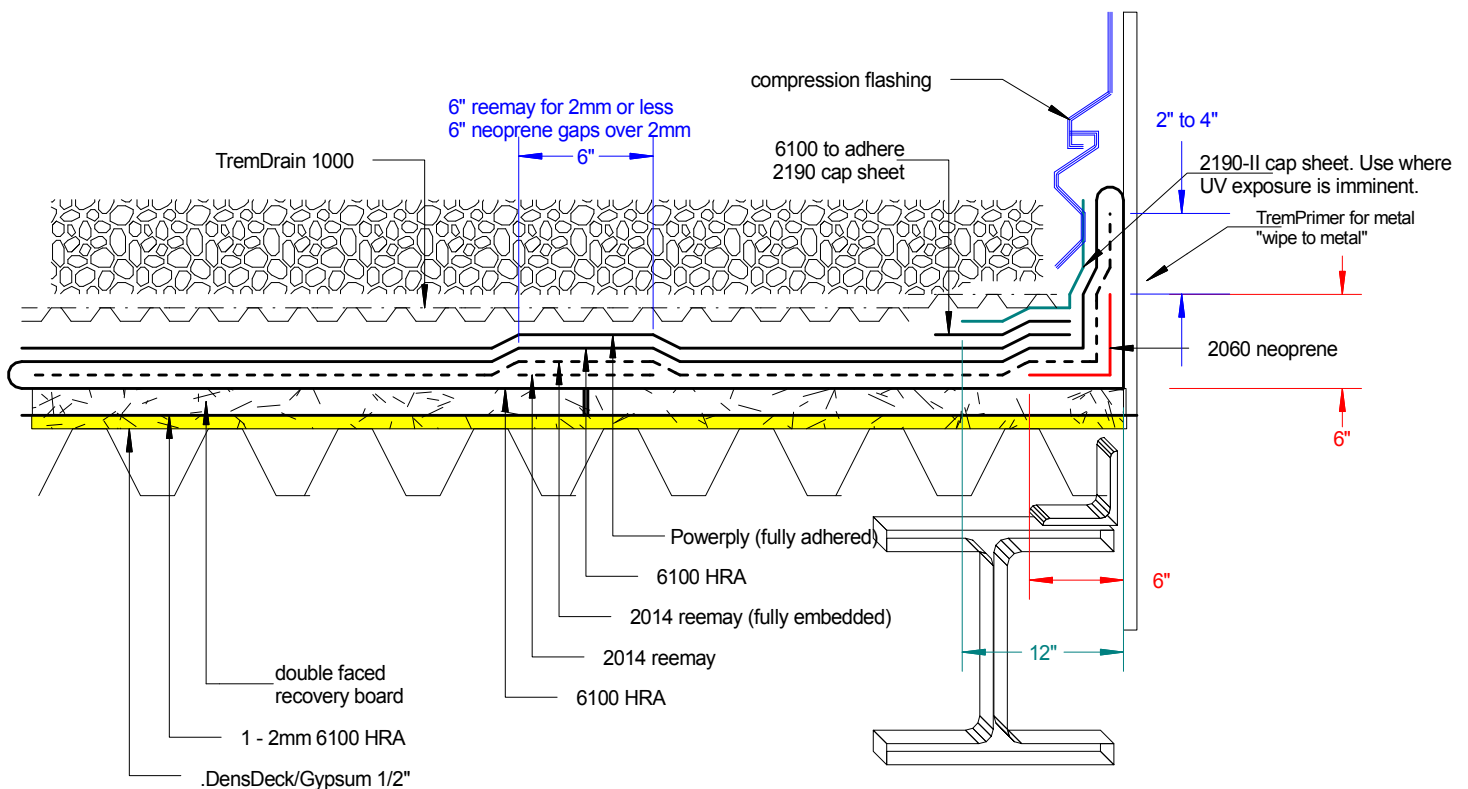
Scale:

Project: Typical



## 6100 HRA detailed over double faced Recovery Board

detail>>> D-962-5A



Tremco Canada  
6178 Netherhart Rd.  
Mississauga, On.  
L5T 1B7  
Ph: 905-564-6100  
Fax: 905-564-6110

**Tremco Inc.**  
[www.tremcosealants.com](http://www.tremcosealants.com)

Tremco Inc.  
3735 Green Rd,  
Cleveland, OH. USA  
44122  
Ph: 216-292-5000  
Fax: 216-292-5036

Date: May-13-2008

Drawing No. D-962-5A

Drawn by: G.M.  
Approved: <>

Scale:

Project: typical