

HOW TO EXPORT A POINT CLOUD FROM REALWORKS FOR EGDEWISE

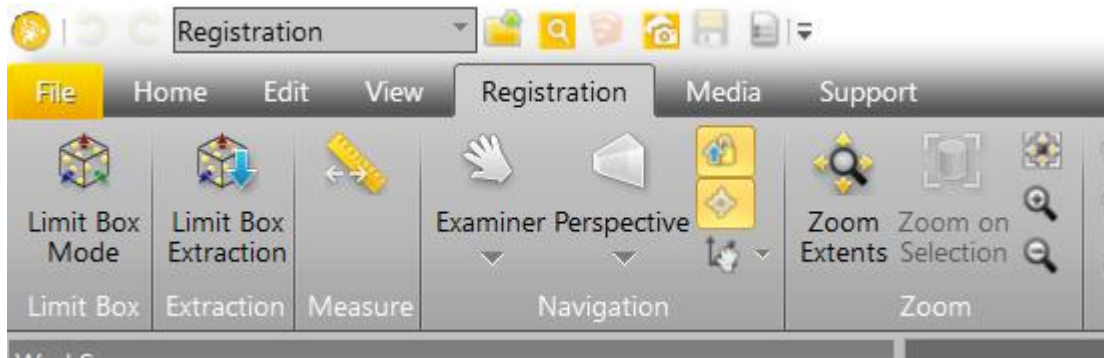
Exporting to TZF (Preferred)

Once the project is registered, it can be exported as either Registered **TZF files**, **PTX files**, or **E57 Files**. At this time there is no way to export sections or selections. Only the entire unedited point cloud.

All usable export options are done from the **Registration** part of RealWorks

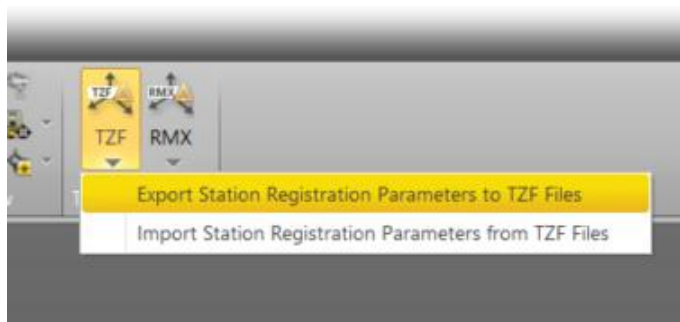
The most efficient way to export, both in file size and processing time, is to apply registration information to the Raw TZF files that the point cloud was created from.

To do this, go to the Registration Tab.



Select the project in the Workspace. The TZF files may need to be reimported.

On the far right in the **Transformations** section, Select the **TZF drop down**, then select the **Export Station Registration Parameters to TZF Files**



There is no pop up and it should only take a few seconds to complete the process.

Go to the folder with the now edited TZF files and confirm that they have been changed by looking at the date and time they were last edited.

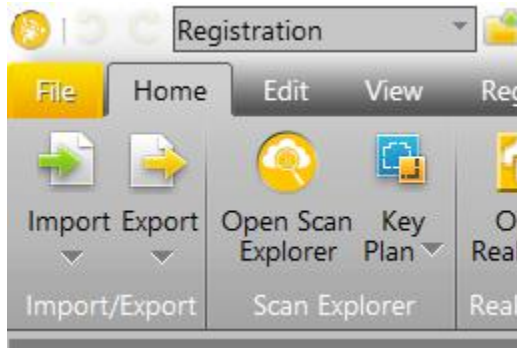
These files can now be used in EdgeWise. Either copy and paste them into a new folder that you would like to process in or process them directly in the same folder.

HOW TO EXPORT A POINT CLOUD FROM REALWORKS FOR EGDEWISE

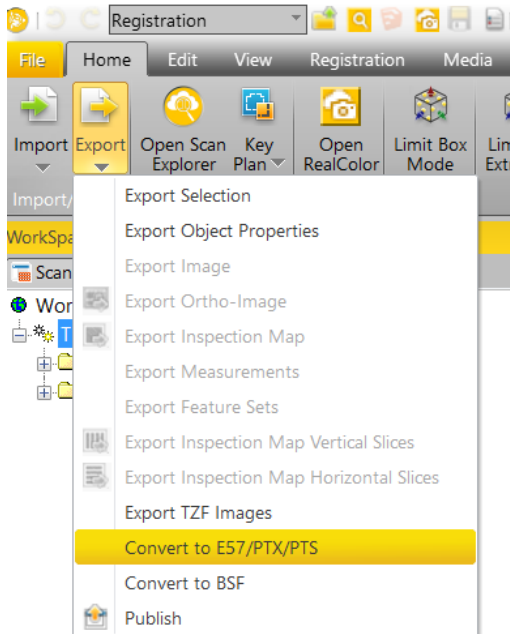
Exporting to PTX/E57

It is also possible to export your point cloud from RealWorks to EdgeWise as PTX and E57 files. This is not as efficient as using the TZF files because it requires more processing time and takes up more hard drive space.

To export as a PTX or E57 file you must be in the Registration part of the software.



Go to the Home Tab and select the Export option, then the **Convert to E57/PTX/PTS** option



Never select the PTS option because this will block EdgeWise from performing automated processes.

Choosing PTX is a better option over E57 because EdgeWise will need to convert E57 files to PTX files in order to process them.