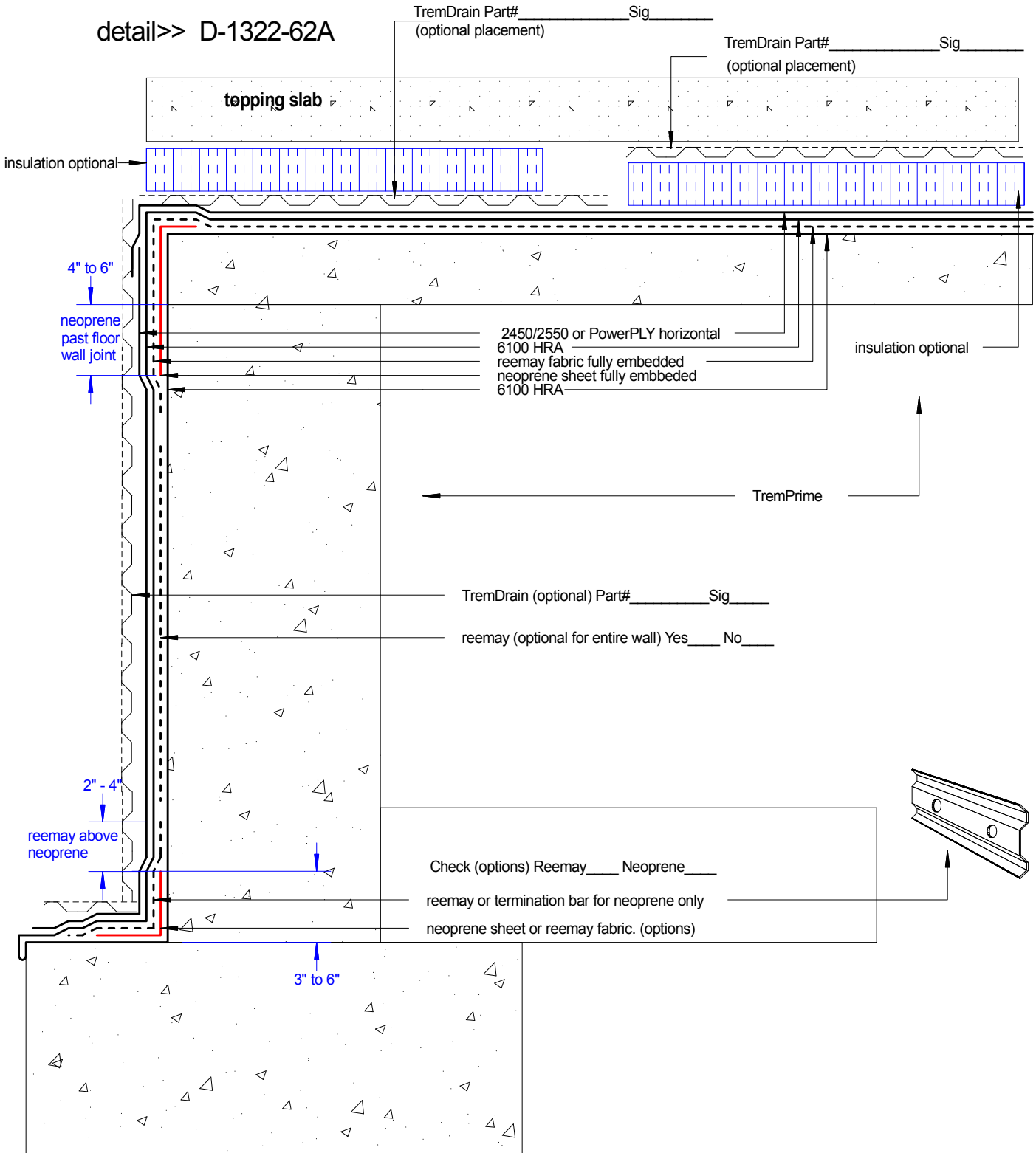


6100 HRA Topping Slab And Wall.
Shown: 6100 HRA below insulated topping slab

TREMCO

detail>> D-1322-62A



Tremco Canada
6178 Netherhart Rd.
Mississauga, On.
L5T 1B7
Ph: 905-564-6100
Fax: 905-564-6110

Tremco Inc.
www.tremcosealants.com

Tremco Inc.
3735 Green Rd,
Beachwood, OH. USA
44122
Ph: 216-292-5000
Fax: 216-292-5036

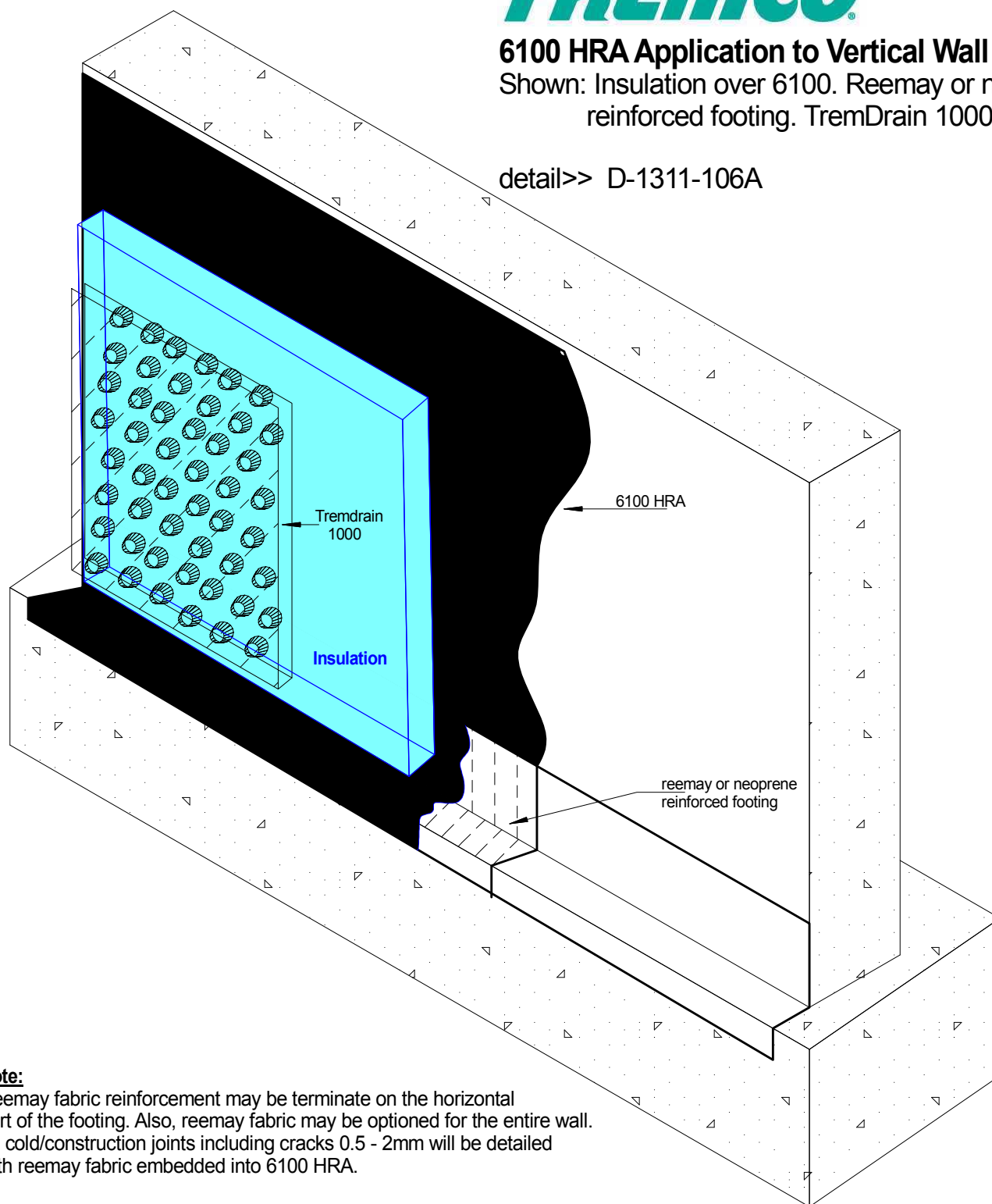
Date: Apr-9-2010		Drawing No. D-1441-228A
Drawn by: G.M.	Approved: <>	Scale:
Project:		



6100 HRA Application to Vertical Wall

Shown: Insulation over 6100. Reemay or neoprene reinforced footing. TremDrain 1000

detail>> D-1311-106A



Note:

Reemay fabric reinforcement may be terminate on the horizontal part of the footing. Also, reemay fabric may be optioned for the entire wall. All cold/construction joints including cracks 0.5 - 2mm will be detailed with reemay fabric embedded into 6100 HRA.

Tremco Canada
6178 Netherhart Rd.
Mississauga, On.
L5T 1B7
Ph: 905-564-6100
Fax: 905-564-6110

Tremco Inc.
www.tremcosealants.com

Tremco Inc.
3735 Green Rd,
Beachwood, OH. USA
44122
Ph: 216-292-5000
Fax: 216-292-5036

Date: Mar-19-2010

Drawing No.
D-1311-106A

Drawn by:
G.M.

Approved:
<>

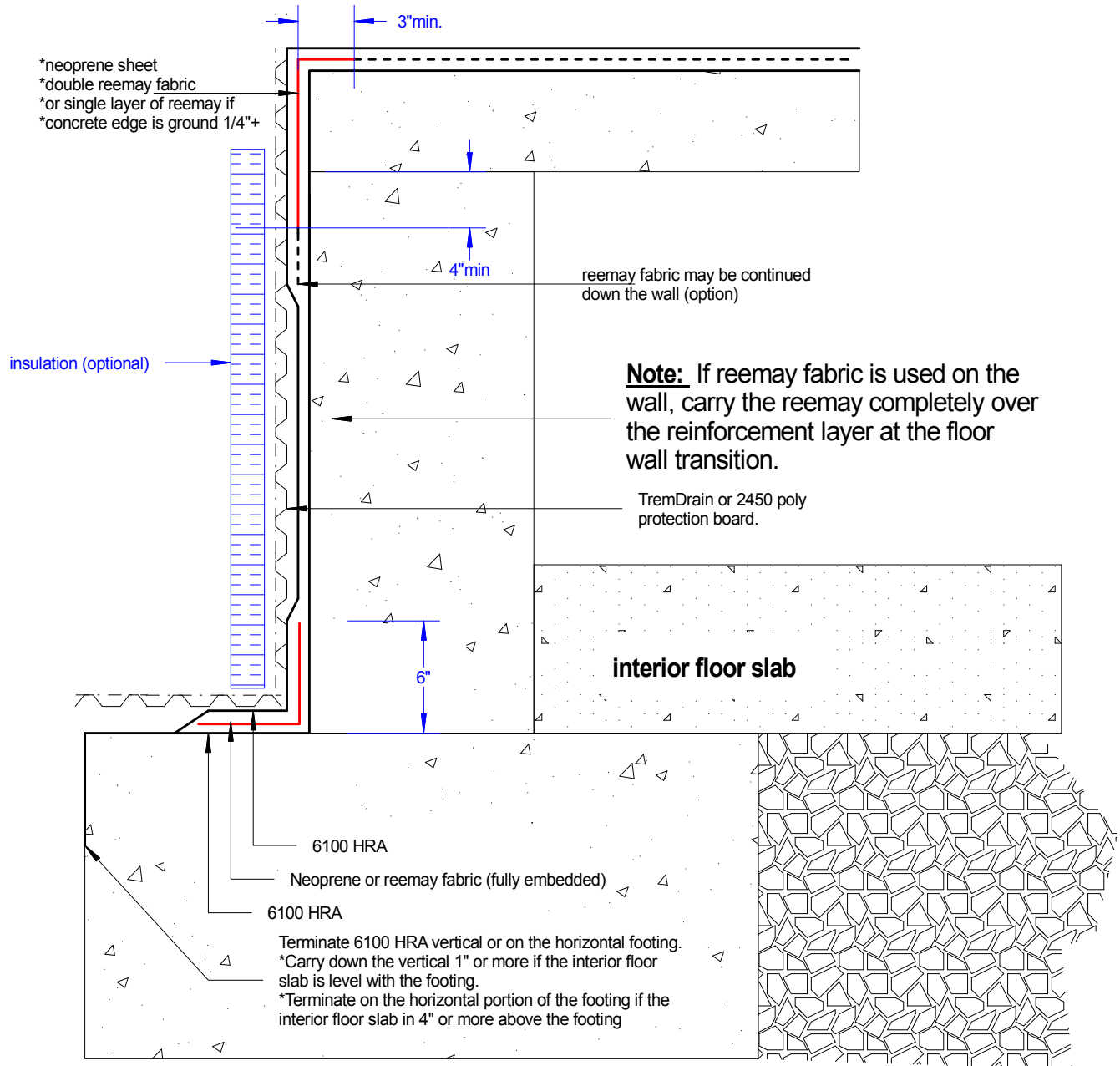
Scale:

Project:



TP-6100 HRA Wall & Footing Detail

detail>> D-1055-161A



Tremco Canada
6178 Netherhart Rd.
Mississauga, On.
L5T 1B7
Ph: 905-564-6100
Fax: 905-564-6110

Tremco Inc.
www.tremcosealants.com

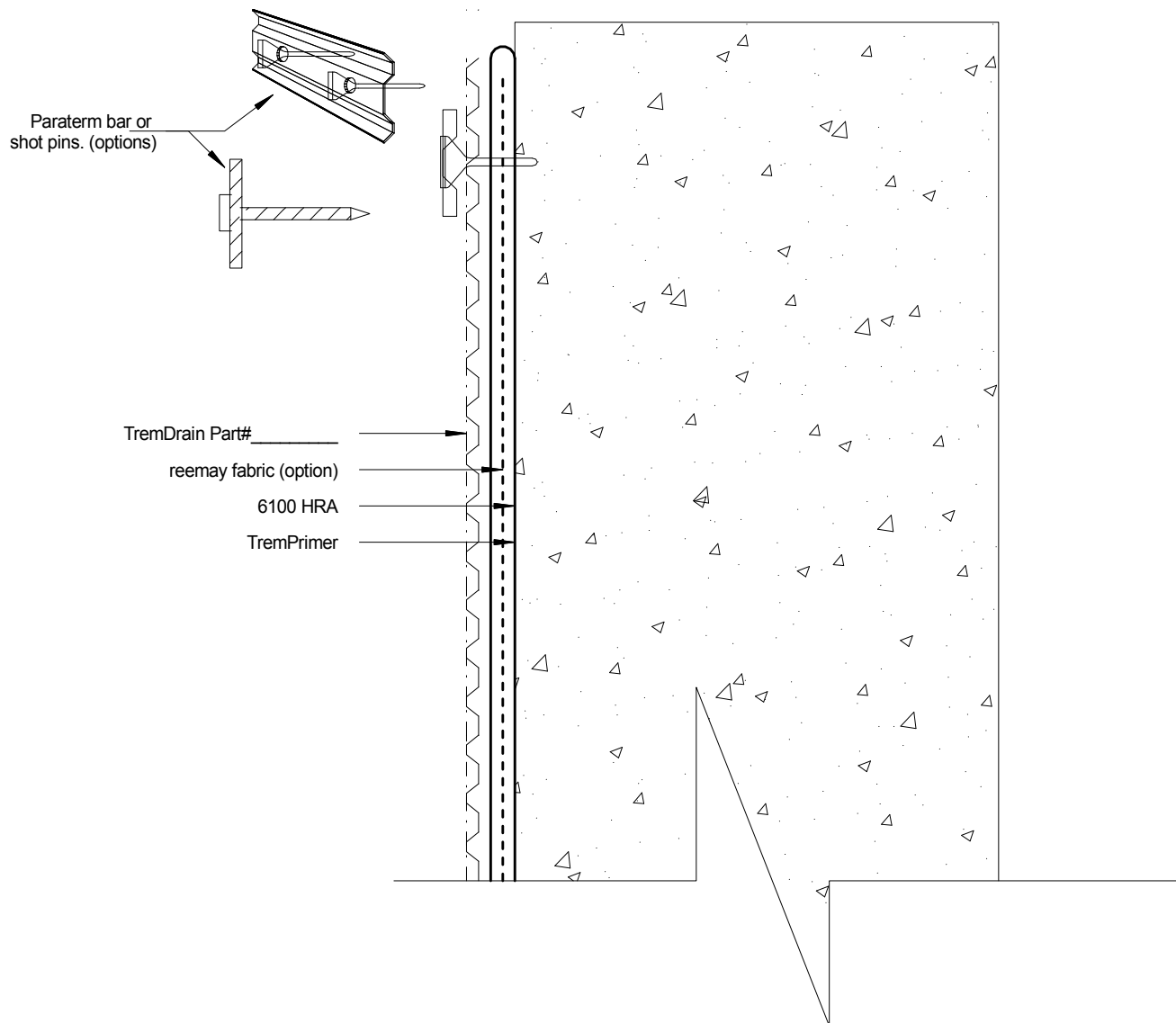
Tremco Inc.
3735 Green Rd,
Beachwood, OH. USA
44122
Ph: 216-292-5000
Fax: 216-292-5036

Date: Jun-28-2010		Drawing No. D-1055-161A
Drawn by: G.M.	Approved: <>	Scale:
Project:		



TP-6100 HRA Termination at Grade

detail>> D-1244-283A



Tremco Canada
6178 Netherhart Rd.
Mississauga, On.
L5T 1B7
Ph: 905-564-6100
Fax: 905-564-6110

Tremco Inc.
www.tremcosealants.com

Tremco Inc.
3735 Green Rd,
Beachwood, OH. USA
44122
Ph: 216-292-5000
Fax: 216-292-5036

Date: May-22-2007		Drawing No. D-1244-283A
Drawn by: G.M.	Approved: <>	Scale:
Project:		