



6100 HRA to Small Metal or Plastic Conduits.

Shown: conduit in close proximity to wall or obstruction.

detail>> D-1379-152A

Note:

Trick of the trade". 6100 may be brushed directly to plastic conduit at 1mm (1/16") thick. Let cure for 10 minutes and apply second coat of 6100 at 2 - 3mm (1/8") thick over first coat. This will ensure the first coat insulates the plastic from damage caused by heat. The reemay fabric may be installed from 1" to 4" onto conduit. Where tight spaces prevent reemay from being properly installed, eliminate the reemay if above the waterline.

TremPrimer wiped to metal or plastic conduit after 240FC has been installed and cured.

clamping ring (mandatory)

Reemay may be cut into strips and wrapped around conduit. (see note)

PowerPly or specified protection embedded into 6100. Neoprene under clamping ring may be substituted in certain conditions where PVC conduits are in close proximity to walls or other obstructions.

6100 HRA

2014 reemay fully embedded

6100 HRA

240FC

TremPrimer

Tremco Canada
6178 Netherhart Rd.
Mississauga, On.
L5T 1B7
Ph: 905-564-6100
Fax: 905-564-6110

Tremco Inc.
www.tremcosealants.com

Tremco Inc.
3735 Green Rd,
Beachwood, OH. USA
44122
Ph: 216-292-5000
Fax: 216-292-5036

Date:
Apr-9-2010

Drawing No.
D-1441-228A

Drawn by:
G.M.

Approved:
<>

Scale:

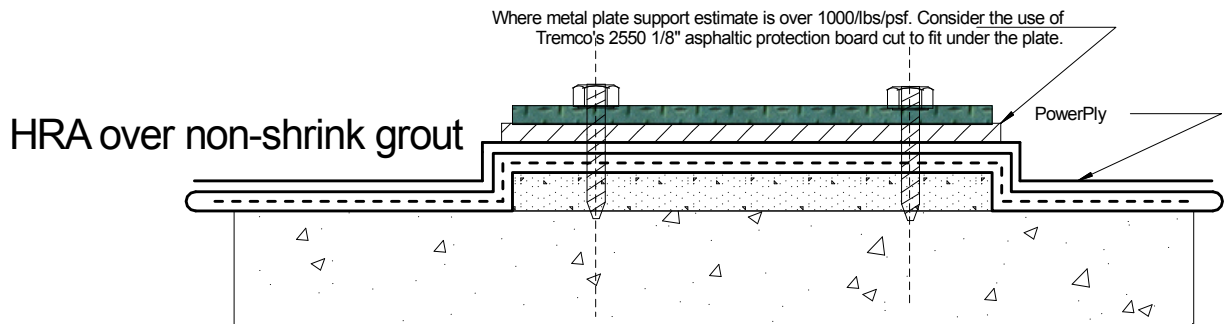
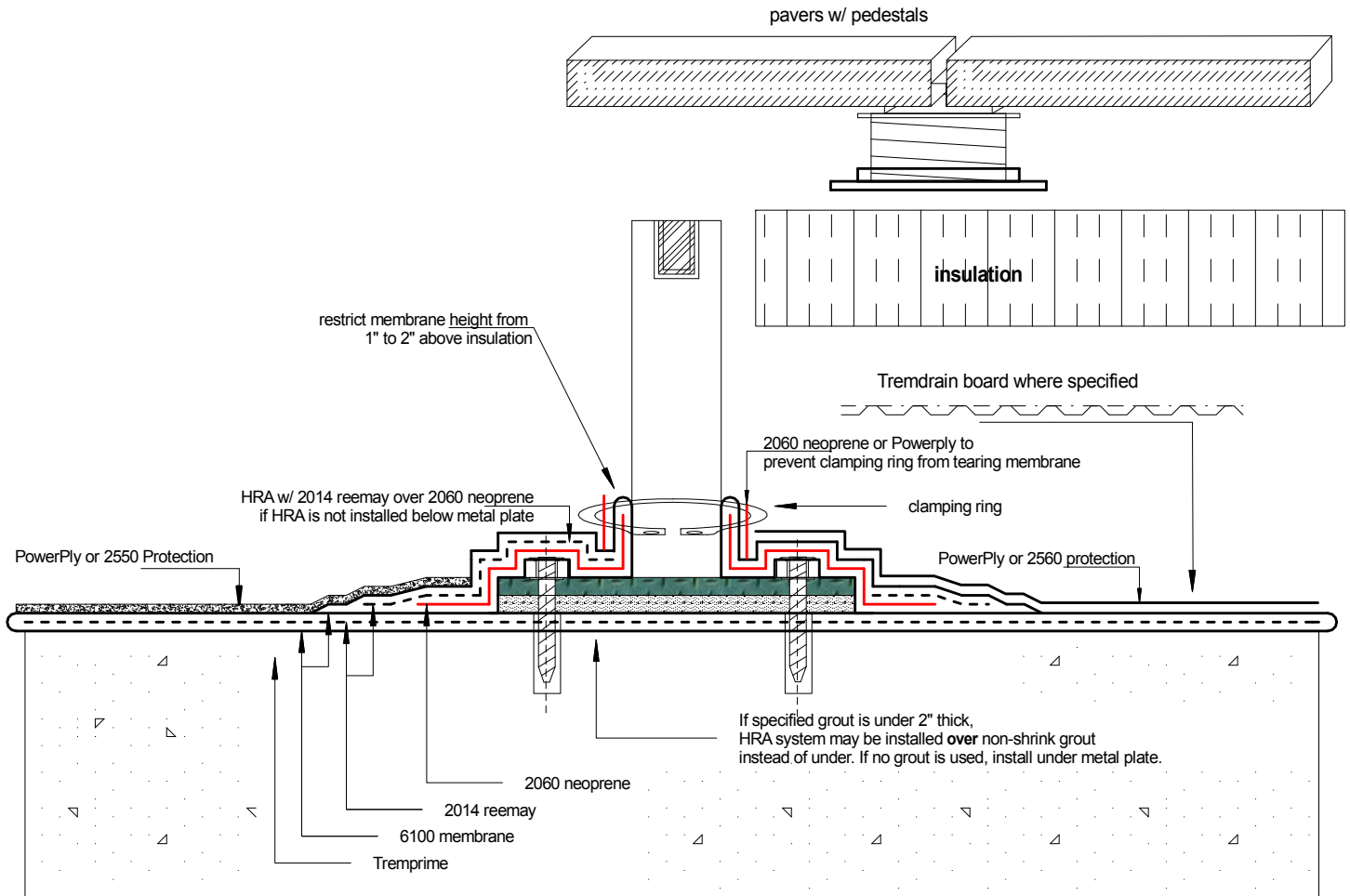
Project:



6100 HRA system

Aluminum post (baseplate) reinforced waterproofing.

>draft D-292-1C



Tremco Canada
6178 Netherhart Rd.
Mississauga, On.
L5T 1B7
Ph: 905-564-6100
Fax: 905-564-6110

Tremco Inc.
www.tremcosealants.com

Tremco Inc.
3735 Green Rd,
Cleveland, OH. USA
44122
Ph: 216-292-5000
Fax: 216-292-5036

Date: Sep-22-2007		Drawing No. D-292-1C
Drawn by: G.M.	Approved: <>	Scale:
Project:		

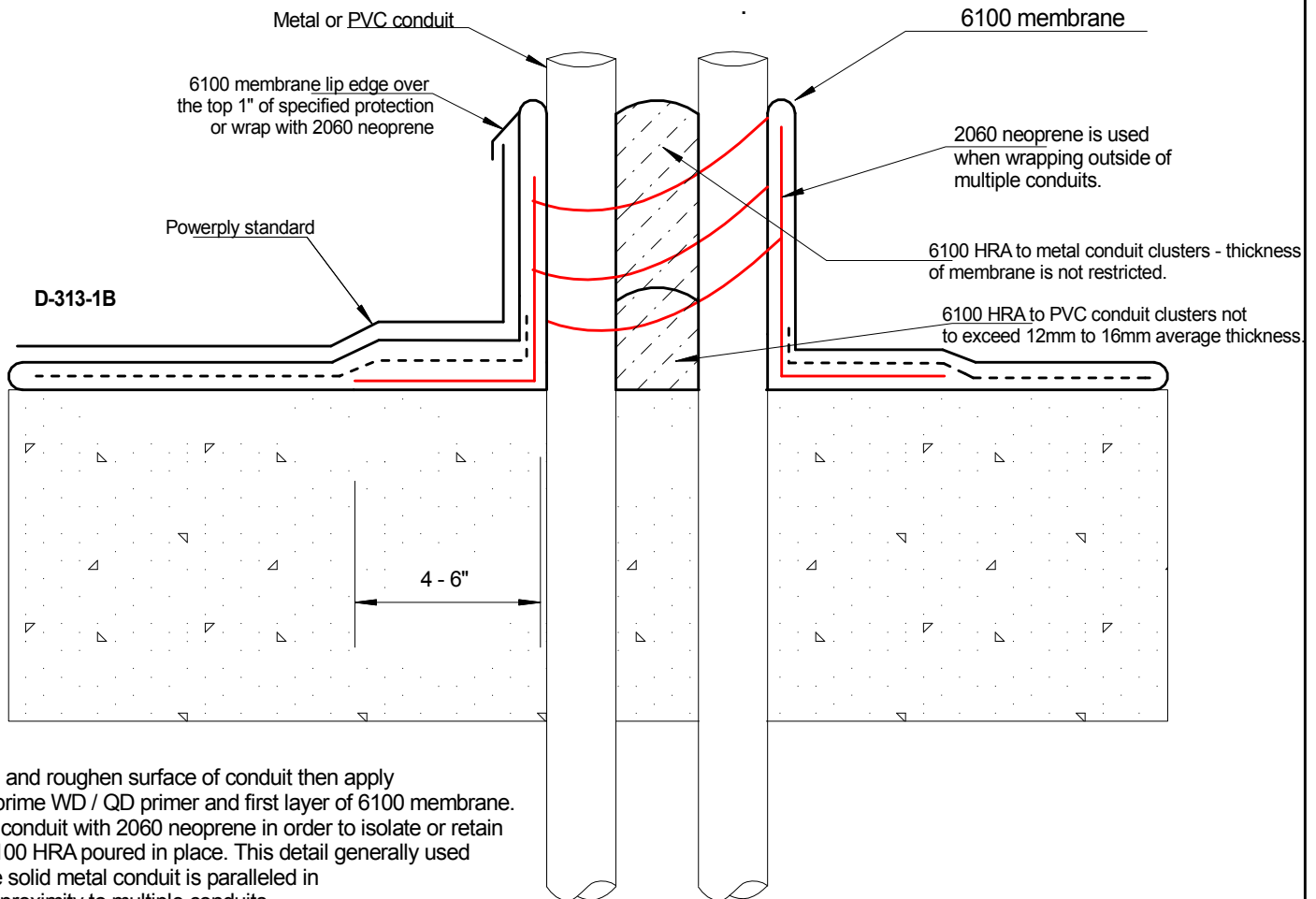


Multiple conduit detail

Typically used where metal or PVC conduit is paired through the concrete substrate.

clamp only rigid pipe
when conditions allow.

Where metal conduits are approximately 0.125" - 2" apart, clean and roughen surface of the conduits and apply 6100 membrane to the concrete and conduit surfaces. Immediately wrap 2060 neoprene completely around the conduits as to form a pocket in which to pour 6100 hot rubberized membrane.



Clean and roughen surface of conduit then apply Tremprime WD / QD primer and first layer of 6100 membrane. Wrap conduit with 2060 neoprene in order to isolate or retain the 6100 HRA poured in place. This detail generally used where solid metal conduit is paralleled in close proximity to multiple conduits.

Metal vs. PVC Conduits

Where conduits are electrical protection type xx, 2014 reemay may be substituted for 2060 neoprene when wrapping 2 or more conduits. Remember, the idea is to create a pitch pocket by wrapping the conduits and pouring the 6100 rubberized membrane down the center totally filling the void between the conduits.

Note: Where corrugated flexible PVC conduit is used - Do not use 2060 neoprene. Use only 2014 reemay. Neoprene of any kind will not flex in the same manor as corrugated PVC conduit.

Tremco Canada
6178 Netherhart Rd.
Mississauga, On.
L5T 1B7
Ph: 905-564-6100
Fax: 905-564-6110

Tremco Inc.
www.tremcosealants.com

Tremco Inc.
3735 Green Rd,
Cleveland, OH. USA
44122
Ph: 216-292-5000
Fax: 216-292-5036

Date: rev. Jan-15-2008		Drawing No. D-313-1C
Drawn by: G.M.	Approved:	Scale:
Project:		

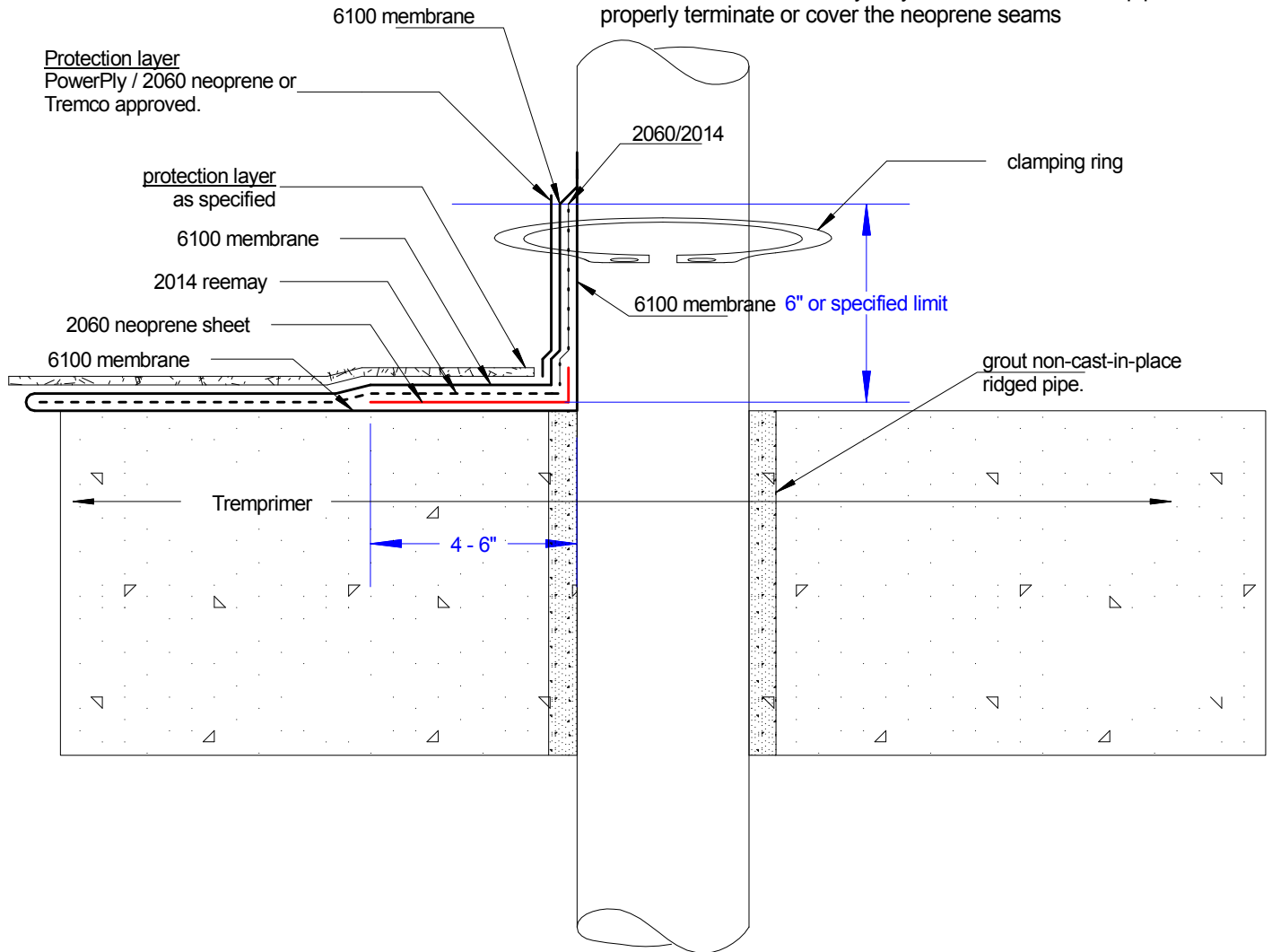


Typical Protrusion detail

TP-6100 HRA shown

Note:

When detailing pipes or protrusions, cut a circle into the PQ-2060 neoprene approximately 25% smaller than the outside diameter of the pipe. Place over the pipe and embed into the hot rubberized membrane. This detail may be used for all ridged pipes 1.25"OD or above. Reemay may be considered for the pipe in order to properly terminate or cover the neoprene seams



Tremco Canada
6178 Netherhart Rd.
Mississauga, On.
L5T 1B7
Ph: 905-564-6100
Fax: 905-564-6110

Tremco Inc.
www.tremcosealants.com

Tremco Inc.
3735 Green Rd,
Cleveland, OH. USA
44122
Ph: 216-292-5000
Fax: 216-292-5036

Date: Jan-7-2008

Drawing No.
D-667-4A

Drawn by:
G.M.

Approved:
<>

Scale:

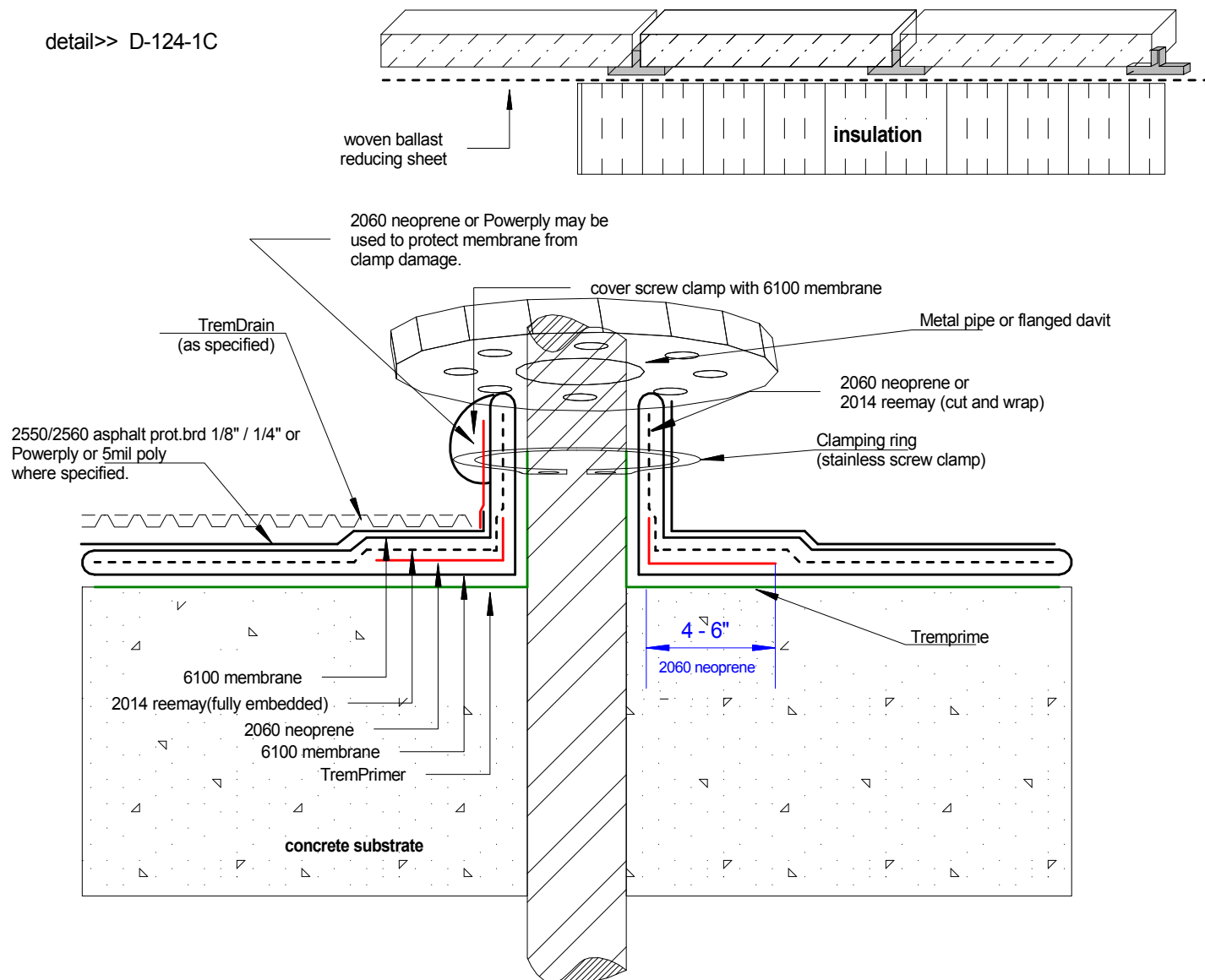
Project:
typical



Metal pipe/flange/protrusion/davit.

Contact Tremco for details including stem ventilation pipes or exhaust stacks where heat may be a concern.

detail>> D-124-1C



Note:

The membrane application to metal conduit or vent pipe should be 1 to 2" higher than the insulation.

Tremco Canada
6178 Netherhart Rd.
Mississauga, On.
L5T 1B7
Ph: 905-564-6100
Fax: 905-564-6110

Tremco Inc.
www.tremcosealants.com

Tremco Inc.
3735 Green Rd,
Cleveland, OH. USA
44122
Ph: 216-292-5000
Fax: 216-292-5036

Date: Feb-2-2008

Drawing No.
D-124-1C

Drawn by: G.M.
Approved: <>

Scale:

Project: Typical